



**Summary**

# of LLINS	Country	Location	When	By whom
13,450 (potentially 16,600)	Senegal	7 health districts, Kedougou region, dept of Saraya	May-Sept 2009	Netlife and U.S. Peace Corps (PCV), District Sanitaire de Kedougou

**Further Information**

1. Please describe the specific **locations & villages** to receive nets and the number to each? Please provide longitude/latitude information. (Important note: If the distribution is approved, approval will be for the nets to be distribution to these specific locations. Location changes will only be considered, and may be refused, if due to exceptional/unforeseen circumstances.)

See attached sheet Appendices 1a, 1b and 2.

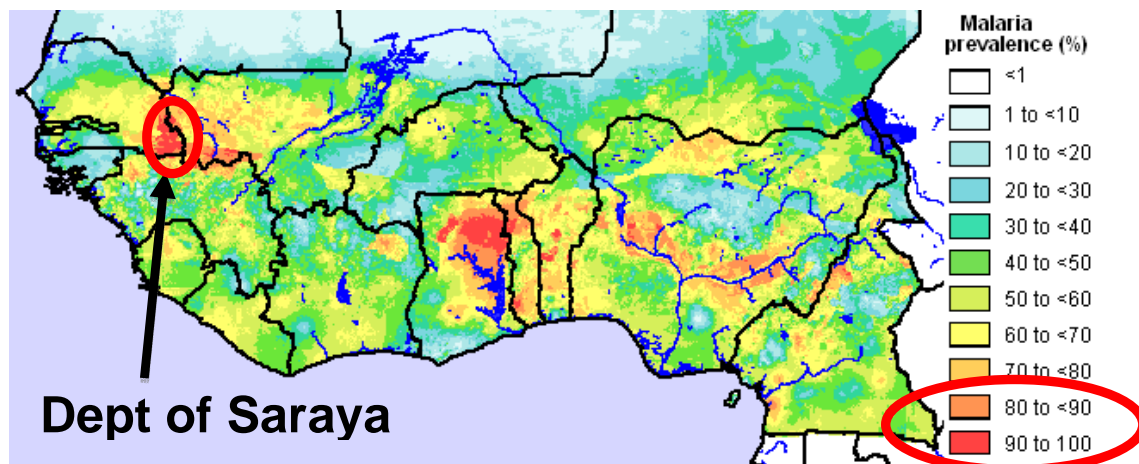
2. Is this an **urban or rural** area and how many people live in this specific area?

Rural - 40,706. Details in Appendix 1.

3. Is this a **high risk malaria area**? If yes, why do you designate it as high?

Yes. High risk due to high malaria prevalence and lack of access to quality health care.

Malaria Prevalence map



4. How many **reported cases of malaria** and **malaria deaths** were there in this area in 2005? If you do not have statistics please make a qualitative comment.

In a comparable area, 30-50 people test positive for P. falciparum per month at the height of rainy season. The estimate amount of malaria related deaths in this area is 100 per year.

**5. Is this distribution of nets 'blanket coverage' of an area/village or to a select/vulnerable group? If the latter, please describe this group.**

Blanket coverage.

**6. What is the existing level of ITN use in this area? Are there existing bednet distribution programmes in this area?**

In most of these villages, a handful of people may have nets. The condition of these nets varies. The Senegalese Government's PNLP (National Program for the Fight Against Malaria) plan, with the support of the President's Malaria Initiative, is planning to distribute nets to all children between 6 and 59 months of age in Senegal, coinciding with the Ministry of Health's Vitamin A distribution program in 2009. The Netlife / Peace Corps distribution would complete the blanket coverage of this population.

**7. Why was the area/villages chosen for bednet distribution and who made this decision? Please provide the name, position and organisation of the person/s making the decision.**

The Department of Saraya was chosen because:

- It has one of the highest malaria prevalence rates in Senegal.
- Peace Corps Volunteers in the region are highly organized and closely collaborating with local health officials.
- The effort will add value and be closely coordinated with the Government of Senegal plan to distribute nets nationwide to children between 6 and 59 months of age.
- It is a manageable first phase of achieving 100% Kedougou region-wide coverage by 2010.

All villages in the Department of Saraya will be covered. This strategy was developed by the local health officials in consultation with Peace Corps Volunteers in the area.

Contact: Chris Hedrick, Peace Corps Senegal Country Director - chedrick AT sn.peacecorps.gov - +221 77 637 4704. Others participating in the strategy development include: Debbie Gueye, USAID Malaria Coordinator, dgueye AT usaid.gov, +221 33 869 6193. Dr. Yousouffa Ndiaye, Medecin Chef, District Sanitaire de Saraya, +221 77 637 0453. Dr. Doudou Sene, Regional Chef de Medecin, +221 77 639 0607

More broadly, the region of Kedougou was chosen because it is at very high risk and has very high prevalence of malaria.

Kedougou is the southeastern region in Senegal, bordering both Mali and Guinea. It is the most distant corner of Senegal from governmental and economic services. This Netlife / Peace Corps distribution also focuses on education around malaria prevention and treatment with these audiences. This area, with its new mining and migrant worker population, was chosen so we can also promote AIDS/HIV awareness during these educational sessions.

**8. Have you consulted with the National Malaria Programme in your country about this distribution and what was their response? Please provide the name, position and contact details of the person/s with whom you have liaised.**

We have consulted with the district and regional level health officials associated with the National Malaria program and with the US Government officials coordinating the President's Malaria Initiative.

They are all supportive and working to ensure smooth collaboration. Contacts include: Debbie Gueye, USAID Malaria Coordinator, dgueye AT usaid.gov, +221 33 869 6193. Dr. Yousouffa Ndiaye, Medecin Chef, District Sanitaire de Saraya, +221 77 637 0453. Dr. Doudou Sene, Regional Chef de Medecin, +221 77 639 0607.

**9. Please describe any pre-distribution activity, in particular how the size of the target group and number of nets required will be ascertained?**

The Poste de Sante data is accurate enough in aggregate to place an order for LLINs to cover the Region of Kedougou. Based on approximately 130,000 people, and previous PC experience with LLIN distribution and the ratio of people to beds in the area, an estimated 75,000 LLINs would be needed to provide universal coverage.

However, we have recently been informed of the Senegalese Government's PNLN (National Program for the Fight Against Malaria) plan, with the support of the President's Malaria Initiative, to distribute nets to all children between 6 and 59 months of age in Senegal, coinciding with the Ministry of Health's Vitamin A distribution program in 2009. If we take into account that 17% of the population is under the age of five, 62,250 nets would be needed in order to cover the remainder of the population.

Of the 62,250 nets required, 16,600 would be necessary in 2009 and 45,650 would be needed in 2010, for the planned 2 year campaign to provide universal coverage.

**10. Please describe how the bednets will be distributed, by whom, whether distribution will be a focussed effort or part of a combined programme and if there will be an information/education component to the distribution? Please indicate over what time period (typically, the number of days or weeks) the distribution will occur.**

Peace Corps will partner with shipping logistics experts in the US embassy Dakar to facilitate the unloading of the nets at the port and transfer to a local shipping company to transport them the 700km to Kedougou.

Once the LLINs have reached Kedougou, PCVs will work with the local Postes de Sante to create a comprehensive accurate census. Trainings will be done with local (Health Education Agents) HEAs, including extensive role-playing, site visits, and question and answer sessions in local languages. Based on the results of the census, the nets will be divided by village and prepared for transport.

From Kedougou, local governmental vehicles (sous-prefet, prefet, district sanitaire, Communautés Rurales), aided by support pledged by the local gold mining companies will transport the LLINs to selected Drop-off Points (DoP) in each zone. DoPs will be the largest, and/or most centrally located 3 or 4 villages in the catchment zone of each Poste de Sante.

LLINs left at each DoP will be divided by village, and HEAs will coordinate transport by bicycle of LLINs from the DoP to individual villages where they will be stored in the health hut, if available, or with the Village Chief until the day of the distribution.

During the distribution period, a distribution team consisting of language appropriate PCVs will be installed at the Poste de Sante, which will be used as a base of operations for all distribution activities in their catchment zone. The PCVs will sleep and take meals at the Poste and the Poste de Sante personnel will provide basic household services.

All distributions will be performed by bicycle. PCVs will bike (up to 60km per day) to villages where they will distribute the nets already brought in bulk to the village with the help the local HEAs to the population. To avoid the commercialization of the nets in the local market and assure their use, all LLINs will be removed from their packaging, and the name of the village, date, and net owners name will be written directly on the net in permanent marker.

Concurrent with the physical distribution of nets, the distribution team will perform trainings on proper usage of LLINs - time of day, season, washing instructions, etc. Trainings will also be provided on proper diagnosis of malaria and how to access Senegalese government-provided treatment. To make these trainings as memorable as possible, the distribution teams will perform skits using costumes and masks.

**11. What post-distribution follow-up is planned to assess the level of usage (hang-up percentage) of the nets? How long after the distribution will this assessment take place? Will you provide us with the findings? What will you be able to do subsequently to increase net hang-up if relevant?**

Follow up of the distributions will be done by local Peace Corps volunteer, local community health agents and area health post personnel. These assessments will be made at durations that coincide with other village visits.

Since these village visits consist of the regular vaccination tours, they will occur at 2 to 3 month intervals. The main goal of these follow-ups is to make sure beds are hung up over beds and being used. If this is not occurring as desired, we will continue to educate the population about the benefits of proper bed net use.

**12. Please give the name and contact information for the (government) head of the district health management team for the/each area. Please ensure you include contact information.**

Dr. Yousouffa Ndiaye, Medecin Chef, District Sanitaire de Saraya, +221 77 637 0453. Dr. Doudou Sene, Regional Chef de Medecin, +221 77 639 0607

In Saraya - Dr. Youssoupha N'Diaye  
+221-77-637-04-53, youlebou AT gmail.com

In Kedougou - Regional Chef du Medecin, Dr. Doudou Sene  
221-77-639-06-07, drdocsene AT yahoo.fr

**13. Please confirm the nets will be distributed free-to-recipients, a requirement for us to fund nets.**

Nets will be free to recipients.

**14. Please confirm you will send us, post-distribution, at least 40 digital photos per sub-location, taken at the distribution/s, to be added to our website as we report on the distribution to donors.\***

There will absolutely be 40 or more digital photos taken and submitted from each sub-location.

**15. Please indicate if you will be able to provide video footage from each sub-location. This is not mandatory but is preferred and aids reporting to donors and encourages further donor giving.\***

5 minutes of video footage from each sub-location will be provided.

**16. Please confirm you will send a Post-Distribution Summary when the distribution is complete.\***

A post-distribution summary will be submitted upon completion.

**17. Please provide your name, role and organisation and full contact information.**

Andrew Sherman - Co President of Netlife  
375 Cromwell Dr.  
Rochester, NY 14610  
USA  
asherman AT netlifeafrica.org  
+1 585.752.2799

and

Christopher Hedrick  
Country Director  
Peace Corps/Senegal  
Mobile: +221 77 637 4704  
Chedrick AT sn.peacecorps.gov

\*Information on providing photos, video and a Post-distribution Summary is included in the attached document.

## Appendix 1a

District Sanitaire of Saraya by Postes de Santes  
 Bednet numbers if nets for under 5s are distributed by the  
 June09 National Malaria Campaign

Total: 13,450

<b>MISSIRA SIRIMANA</b>			<b>MISSIRA DANTILA</b>			<b>SAENSOUTOU</b>		
Long. lat: 13.07 N, 11.64 W			Long. lat: 12.47 N, 11.75 W			Long. lat: 13.30 N, 11.70 W		
Village	Population	Nets	Village	Population	Nets	Village	Population	Nets
Missira Sirimana	752	256	Missirah Dantila	746	254	Bagué	61	21
Bala Konko	330	112	Toubacouta	196	67	Bountoung	146	50
Daloto	898	306	Sékhoto	233	79	Mouran	189	64
Bokhody	188	64	Khoulaya	112	38	Saensoutou	1092	372
Vassangran	667	227	Dindiarq	193	66	Sekoto	201	69
Moussala	300	102	Moulounga	229	78	Khassaguiry	77	26
Lingokhoto	156	53	<b>Subtotal</b>	<b>1,709</b>	<b>583</b>	Dambala	370	126
Ilimalo	194	66	<b>KHOSSANTO</b>			Touminfara	141	48
Daworola	181	62	Long. lat: 13.12 N, 11.95 W			Vortokhaty	213	73
Faranding	192	65	Village	Population	Nets	<b>Subtotal</b>	<b>2,490</b>	<b>849</b>
Madina Sirimana	780	266	Khossanto	2788	950	<b>SAROUDIA</b>		
Toumbinding	44	15	M'Bandankoly	1865	636	Long. lat: 12.50 N, 11.56 W		
<b>Subtotal</b>	<b>4,682</b>	<b>1,596</b>	Tarandéto	118	40	Village	Population	Nets
<b>SARAYA</b>			Massa Massa	275	94	Saroudia	527	180
Long. lat: 12.83 N, 11.75 W			Yéndéboula	216	74	Médina Baffé	458	156
Village	Population	Nets	Niamaga	217	74	Noumou-foukha	704	240
Badioula	337	115	Léfakho	218	74	Guémédjé	787	268
Banfarote	46	16	Madina Bérola	265	90	Vamba	410	140
Barabiri	372	127	Bérola	164	56	Taméguedja	305	104
Bembou	887	302	Diégoung	193	66	Sakhouga	839	286
Dalafing	299	102	Kobokhoto	254	87	<b>Subtotal</b>	<b>4,030</b>	<b>1,374</b>
Dantila	48	16	Tourokhoto	209	71	<b>NAFADJI</b>		
Diakha Madina	503	171	Diakhaling	613	209	Long. lat: 12.69 N, 11.62 W		
Diobq	30	10	Kégnéknébanding	341	116	Village	Population	Nets
Dioulafoundou	319	109	Mamakhono	263	90	Nafadji	704	240
Faraba	228	78	Dindifa	649	221	Samécouta	429	146
Fitaba	19	6	Bambaraganding	214	73	Samékhoto	140	48
Fodé Binéa	153	52	Bambaraga	376	128	Balorg	181	62
Kondokhou	854	291	Bransan	979	334	Baitilage	153	52
Madiéry	38	13	Madina Bransan	764	260	Boboty	159	54
Madina Dantila	18	6	Sountoukholong	284	97	Satadougou	188	64
Mandankholy	74	25	Dialokotoba	315	107	Bouréa	417	142
Pondala	409	139	Faloumbou	448	153	Sancéla	184	63
Sanéla	521	178	Sabodala	1215	414	Madina	109	37
Saraga	2650	903	Madina Sabodala	436	149	Bambadji	321	109
Kharakhéna	95	32	Makhanna	261	89	Lynguéa	161	55
Gamba gamba	43	15	Sambrambougou	318	108	Kolia	224	76
<b>Subtotal</b>	<b>7,943</b>	<b>2,707</b>	Douta	297	101	Moussalah	245	84
			Dambankhoto	?	?	Sasamba	214	73
			<b>Subtotal</b>	<b>14,555</b>	<b>4,961</b>	Gottou	223	76
						<b>Subtotal</b>	<b>4,052</b>	<b>1,381</b>
<b>Summary</b>								
<b>Poste de Sante</b>	<b>Pop Total</b>	<b>Nets</b>						
Missira Sirimana	4,682	1,596						
Saraga	7,943	2,707						
Missira Dantila	1,709	583						
Khossanto	14,555	4,961						
Saensoutou	2,490	849						
Saroudia	4,030	1,374						
Nafadji	4,052	1,381						
<b>Total</b>	<b>39,461</b>	<b>13,450</b>						
			40,706 population					
			20,353 2 ppl per net					
			6,920 17% U5 covered by Natl Campaign in Jun09					
			13,433 remainder for Universal coverage					

Appendix 1b

District Sanitaire of Saraya by Postes de Santes  
 Bednet numbers IF nets for under 5s are NOT distributed by  
 the June09 National Malaria Campaign

Total: 16,600

<b>MISSIRA SIRIMANA</b>			<b>MISSIRA DANTILA</b>			<b>SAENSOUTOU</b>		
Long. lat: 13.07 N, 11.64 W			Long. lat: 12.47 N, 11.75 W			Long. lat: 13.30 N, 11.70 W		
Village	Population	Nets	Village	Population	Nets	Village	Population	Nets
Missira Sirimana	752	316	Missirah Dantila	746	314	Bagué	61	26
Bala Konkou	330	139	Toubacouta	196	82	Bountoung	146	61
Daloto	898	378	Sékhoto	233	98	Mouran	189	80
Bokhodj	188	79	Khoulaga	112	47	Saensoutou	1092	459
Vassangran	667	281	Dindiarj	193	81	Sekoto	201	85
Moussala	300	126	Moulounga	229	96	Khassaguirj	77	32
Lingokhoto	156	66	<b>Subtotal</b>	<b>1,709</b>	<b>719</b>	Dambala	370	156
Ilimalo	194	82				Touminfara	141	59
Davorola	181	76				Vortokhatj	213	90
Faranding	192	81				<b>Subtotal</b>	<b>2,490</b>	<b>1,047</b>
Madina Sirimana	780	328	<b>KHOSSANTO</b>					
Toumbinding	44	19	Long. lat: 13.12 N, 11.95 W					
<b>Subtotal</b>	<b>4,682</b>	<b>1,970</b>	Village	Population	Nets			
			Khossanto	2788	1,173	<b>SAROUDIA</b>		
			M'Bandankolj	1865	785	Long. lat: 12.50 N, 11.56 W		
			Tarandéto	118	50	Village	Population	Nets
			Massa Massa	275	116	Saroudia	527	222
			Yéndéboula	216	91	Médina Baffé	458	193
			Niamaya	217	91	Noumou-foukha	704	296
			Léfakho	218	92	Guémédjé	787	331
			Madina Bérola	285	111	Vamba	410	172
			Bérola	164	69	Taméguédjia	305	128
			Diégoung	193	81	Sakhouga	839	353
			Kobokhoto	254	107	<b>Subtotal</b>	<b>4,030</b>	<b>1,695</b>
			Tourokhoto	209	88			
			Diakhaling	613	258	<b>NAFADJI</b>		
			Kégnékégnébanding	341	143	Long. lat: 12.69 N, 11.62 W		
			Mamakhono	263	111	Village	Population	Nets
			Dindifa	649	273	Nafadji	704	296
			Bambaraganding	214	90	Samécouta	429	180
			Bambaraga	376	158	Samékhoto	140	59
			Bransan	979	412	Balorg	181	76
			Madina Bransan	764	321	Baitilage	153	64
			Sountoukholong	284	119	Bobotj	159	67
			Dialokotoba	315	133	Satadoungou	188	79
			Faloumbou	448	188	Bouréa	417	175
			Sabodala	1215	511	Sancéla	184	77
			Madina Sabodala	436	183	Madina	109	46
			Makhanna	261	110	Bambadji	321	135
			Sambrambougou	318	134	Linguéa	161	68
			Douta	297	125	Kolia	224	94
			Dambankhoto	?	?	Moussalah	245	103
			<b>Subtotal</b>	<b>14,555</b>	<b>6,123</b>	Sasamba	214	90
						Gottou	223	94
						<b>Subtotal</b>	<b>4,052</b>	<b>1,705</b>
<b>Summary</b>								
Poste de Sante	Pop Total	Nets						
Missira Sirimana	4,682	1,970						
Saraya	7,943	3,341						
Missira Dantila	1,709	719						
Khossanto	14,555	6,123						
Saensoutou	2,490	1,047						
Saroudia	4,030	1,695						
Nafadji	4,052	1,705						
<b>Total</b>	<b>39,461</b>	<b>16,600</b>						



Appendix 2  
Location map showing health districts

