

Against Malaria Foundation

LLIN Distribution Programme – Detailed Information



Summary

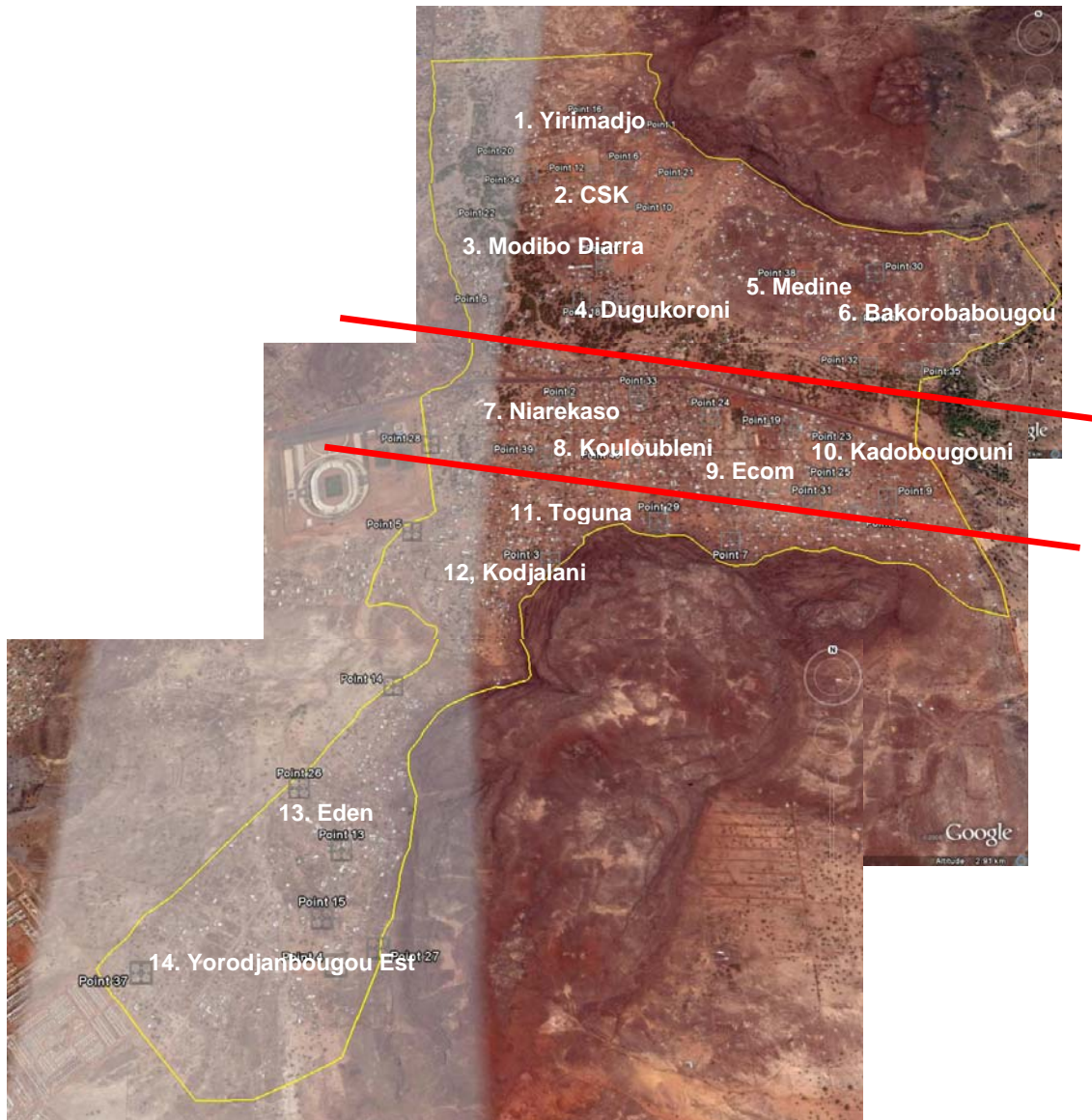
# of LLINS	Country	Location	When	By whom
21,500	Mali	Yirimadjo	July/Aug 2011	Project Muso Ladamunen

Further Information

1. Please describe the specific **locations & villages** to receive nets and the number to each? Please provide longitude/latitude information. (Important note: If the distribution is approved, approval will be for the nets to be distribution to these specific locations. Location changes will only be considered, and may be refused, if due to exceptional/unforeseen circumstances.)

Yirimadjo is a peri-urban area, officially part of Commune VI of Bamako, on the outskirts of the city, in the shadows of the national soccer stadium. It is one, contiguous area, located at latitude range 12/33/41–12/37/30 N, longitude range 7/53/30–7/56/03 W. The attached map shows its borders.

Zone	Population	Nets Needed	Of Which Single Nets Comprise	Usable Nets	Population divided by 2 (A)	Nets in place (from PM data) (B)	New nets required (A)-(B)	PM requested vs expctd on basis of 2ppl/net	Ratio of ppl to nets	Zones
1	3,006	967	16	605	1,503	605	898	+69 5%	1.91	6,632
2	8,444	2,951	319	1,738	4,222	1,738	2,484	+467 11%	1.80	On website as: 5,760
3	1,547	563	61	316	774	316	458	+106 14%	1.76	
4	1,651	710	41	208	826	208	618	+93 11%	1.80	
5	4,120	1,441	38	626	2,060	626	1,434	+7 0%	1.99	
6	1,831	779	31	99	916	99	817	-38 -4%	2.09	5,857
7	3,055	1,366	29	249	1,528	249	1,279	+88 6%	1.89	On website as: 5,860
8	3,140	1,497	41	246	1,570	246	1,324	+173 11%	1.80	
9	2,581	1,049	84	404	1,291	404	887	+163 13%	1.78	
10	2,617	1,166	8	244	1,309	244	1,065	+102 8%	1.86	
11	2,246	933	14	297	1,123	297	826	+107 10%	1.83	4,164
12	1,726	576	5	318	863	318	545	+31 4%	1.93	On website as: 4,160
13	2,795	1,153	166	463	1,398	463	935	+219 16%	1.73	
14	1,753	764	41	255	877	255	622	+143 16%	1.72	
15	2,075	738	137	472	1,038	472	566	+173 17%	1.71	
16	4,580	1,737	114	873	2,290	873	1,417	+320 14%	1.75	5,719
17	1,837	707	4	317	919	317	602	+106	1.79	On website as: 5,720
18	1,754	677	1	285	877	285	592	+85 10%	1.82	
19	2,458	974	2	313	1,229	313	916	+58 5%	1.91	
20	3,555	1,624	146	369	1,778	369	1,409	+216 12%	1.78	
Total	56,771	22,372	1,298	8,697	28,386	8,697	19,689	+2,684	1.83	22,372
										On website as: 21,500



2. Is this an urban or rural area and how many people live in this specific area?

56,000 people live in Yirimadjo currently. As a peri-urban area, Yirimadjo is at the intersection of the vulnerabilities of urban Mali—overcrowding, pollution, etc—and rural Mali—insufficient access to sanitation, healthcare, infrastructure.

3. Is this a high risk malaria area? If yes, why do you designate it as high?

This is a high risk area for malaria. Physicians diagnosed malaria at 49% of curative consultations in 2007. While we believe this statistic, based on empiric diagnosis, likely overestimates prevalence, our own internal data from rapid antigen testing confirms that Yirimadjo is a high risk malaria area: at the end of rainy season, in November 2010, 39% of sick children tested by Community Health Workers in Yirimadjo tested positive for falciparum malaria.

4. Baseline malaria case information. How many **reported cases of malaria and malaria deaths** were there in this **specific** area in the most recent period available? We are looking for data from health clinics in the area. Month by month information is strongly preferred. We are NOT looking for regional level/national level information. Please cite your source. Baseline malaria case information forms the basis of comparison post-distribution.

The Yirimadjo Health Center, the Ministry of Health Primary Care Center through which Project Muso works, reported 9,844 cases of simple malaria (empiric diagnosis) and 5,541 cases of severe malaria (empiric diagnosis) in 2010. We supplement this data with monthly test+ prevalence rates through our community health workers, which we believe provides a more accurate measure of malaria prevalence than case report rates.

Month	Simple Malaria Cases	Severe Malaria Cases
Jan	604	199
Feb	891	260
Mar	562	325
Apr	522	207
May	665	284
Jun	316	664
Jul	1,025	228
Aug	1,022	509
Sep	756	368
Oct	1,593	988
Nov	1,164	930
Dec	724	579
Total	9,844	5,541

5. Is this distribution of nets **'blanket coverage'** of an area/village or **to a select/vulnerable group**? If the latter, please describe this group.

This distribution will be blanket coverage.

6. What is the **existing level of ITN use** in this area? Are there **existing bednet distribution programmes** in this area?

LLINs are distributed through Ministry protocol to children finishing vaccinations and to pregnant women at their prenatal consultations. Project Muso and our partners has supplemented this to the extent possible through community-wide distribution, but given the large size of the community, we have not yet reached our targets. In 2010, based on our annual randomized household survey, we found that 63% of children under five, 60% of pregnant women, and 50% of all people had slept under an impregnated bednet the previous night. While this represents significant improvement from baseline (18% of all people under impregnated bednet in 2007), we still have a long way to go to reach universal coverage.

7. Why was the area/villages chosen for bednet distribution and who made this decision? Please provide the name, position and organisation of the person/s making the decision.

Yirimadjo is the site of The Community Based Malaria Program, a operational research pilot program conducted by Project Muso in partnership with Malian Ministry of Health structures.

8. Have you consulted with the country's National Malaria Programme about this distribution and what was their response? Please provide the name, position and contact details of the person/s with whom you have liaised.

We are in regular contact with our collaborators at the Malian Ministry of Health, including the Dr. Klenon Traore, the National Malaria Control Program Director. If the application is approved, we will reach out to him and his team to discuss details and ensure their involvement. Dr. Klenon Traore, Director, National Malaria Control Program, klenont AT yahoo.fr

9. Please give the name and contact information for the (government) head of the district health management team for the/each area. Please ensure you include contact information.

Dr. Sidiki Coulibaly, Point Focal, Malaria Programs, for the District of Commune VI: Cell: +223.7602.7132

10. Please confirm the nets will be distributed free-to-recipients, a requirement for us to fund nets.

All nets will be distributed free of charge.

11. Please describe all pre-distribution activity, including how the size of the target group and number of nets required will be ascertained and how the local community and leaders will be involved in this phase of the work?

Project Muso conducted a survey of all 5,367 households of Yirimadjo in 2007 that has served as our census data for estimating population size. Since then we have conducted an annual randomized household survey to measure LLIN use/effective coverage. Making certain assumptions about # of sleeping spaces per household, we have provided the baseline estimate to AMF based on this data (see attached spreadsheet).

12. Please describe how the bednets will be distributed and by whom. Please give detail. Please indicate over what time period (typically, the number of days or weeks) the distribution will occur.

Bednet distribution in Yirimadjo will be conducted on a household-by-household basis. Through our Community Organizing program, conducted in partnership with the NGO Tostan, we have organized 14 Community Management Committees, one for each area of Yirimadjo. Each Community Management Committee has 17 members, a total of 238 community organizers.

In addition, Project Muso has trained 24 Community Health Workers in malaria prevention, diagnosis, and treatment who do daily door-to-door outreach conducting 4,964 household visits per month on average (2010 data). The distribution team will be composed of these 238 community organizers, the 24 Community Health Workers, and key personnel from the Yirimadjo Health Center. This team will conduct door-to-door assessments of # sleeping spaces and # LLINs in working condition, in each household, and distribute LLINs based on these assessments. We plan to complete distribution to cover all households in Yirimadjo over the course of 4 weeks, between mid-April and mid-May 2011.

If the number of nets provided surpasses what is ultimately needed for universal coverage in Yirimadjo, we will schedule and plan a subsequent distribution adhering to requirements stated here, either in adjacent communities or further removed sites where partner organizations have sufficient infrastructure to achieve blanket coverage and fulfil reporting requirements. That distribution would likely take place in July, August, or September 2011.

13. Please describe the malaria education component of the distribution. Please give a detailed answer.

Project Muso's Community Health Workers conduct daily door-to-door household visit in their neighbourhoods to train community members in malaria prevention techniques including bednet usage. They also diagnose and treat simple cases of pediatric malaria. In addition, we currently have more than 600 participants enrolled at 14 non-formal education centers learning about malaria prevention techniques. All distributors will be trained to instruct household members in effective bednet use. In addition, there will be at least one community-wide launch event that will include malaria prevention education.

14. Please confirm: a) you will conduct immediate post-distribution follow-up to assess the level of usage (hang-up %) of the nets; b) this take place within four weeks of the distribution; c) you will provide us with the findings.

We plan to conduct our Annual Randomized Malaria Prevention and Treatment Survey of 400 households, using the validated sampling and survey methodology we have already established, in early to mid June 2011, which will be within 4 weeks of the end of distribution in Mid May. This survey will include information on % of all people, pregnant women, and children under 5 who slept under an impregnated bednet the previous night, # nets per household, # sleeping spaces. We will share these findings with you.

15. Please confirm you will send a Post-Distribution Summary when the distribution is complete.**

We will provide a Post-Distribution Summary when the distribution is complete.

16. Please confirm you will send us, post-distribution, at least 60 digital photos per sub-location, taken at the distribution/s, to be added to our website as we report on the distribution to donors.**

We will provide 60 digital photos per sub-location of the distribution for you to include on your website and reports to donors.

17. Please confirm you will provide at least 15 minutes video footage from each sub-location. It does not need to be 'broadcast' quality and can be taken with a handheld digital video camera.**

We will provide 20 minutes of video footage per sub-location, taken by community members and team members, which will not be professional quality but which will document distribution.

18. Please confirm: you will carry out longer-term Post-Distribution Reviews (PDRs) to assess the level of usage (hang-up %), correct usage and condition of the nets; b) this will take place 6, 18, 30 and 42 months after the distribution of the nets; c) you will provide us with the findings.**

We will conduct 50 post distribution surveys at each sub-location at 6, 18, 30, and 42 months after the distribution of nets and provide those findings.

19. Please provide your name, role and organisation and full contact information.

Ari Johnson, Co-Executive Director, Project Muso Ladamunen, a Project of Under the Baobab Tree Inc, EIN 20-3171837. Mali: +223.7096.8889. US: +1.202.657.6876. ari AT projectmuso.org
1380 Monroe St NW Box 309 Washington DC 20010.

*Sub-locations are mutually agreed and are typically a portion of the total distribution ie A 20,000 net distribution, for photo and video reporting purposes, might be divided into 5 sub-locations.

**Information on the provision of photos, video, Post-distribution Summary and Post-Distribution Reviews is included in the attached document.

Ends—