

ROTARIANS AGAINST MALARIA



LONG LASTING INSECTICIDAL NET DISTRIBUTION REPORT

Jiwaka Province

Carried Out In Conjunction With The Provincial And District Government Health
Services And The Church Health Services Of Jiwaka

With Support From Against Malaria Foundation And Global Fund

28 May to 6 July 2017



Summary

A survey and distribution of Long Lasting Insecticidal Nets (LLINs) to family level was carried out in the Jiwaka Province between 28 May to 6 July 2017.

This is the fourth time that Jiwaka has received nets and the third time under RAM coordination with Global Fund funding. In Round Three of the Global Fund, distributions were carried out in North Waghi and Anglimp South Waghi in 2008 and Jimi in 2009. The initial LLIN distributions in 2008 and 2009 were coordinated by the Western Highlands Provincial Health Authority. However, the LLIN distributions done in North Waghi and Anglimp South Waghi in 2011, 2014 and now in 2017 and Jimi District in 2012 and 2015 were carried out under the coordination of RAM with joint implementation with the provincial health authorities of first Western Highlands and then later together with the new Jiwaka Provincial Health Authority.

It should also be noted that the nets for the 2017 distribution were funded through a donation of nets from the Against Malaria Foundation with the costs of distribution covered by Global Fund. This is also the fifth province to have a new survey verification process used after this was initiated by the Against Malaria Foundation who is now funding the cost of most of the LLINs for PNG.

This programme was covering an estimated target population of 253,373 in the targeted districts. After survey and distribution, the project recorded within this targeted population 255,741 people (156,254 Anglimp South Waghi and 99,487 North Waghi). To this population were distributed 124,608 LLINs (75,855 Anglimp South Waghi and 48,753 North Waghi) giving an overall ratio of 48.7 LLINs distributed to every 100 people.



Fig.1 – Plane being loaded in Mount Hagen (Left) And Unloaded In Mount Au (Right)

A further 749 LLINs were donated to health centres as nets were surplus to requirement and in most cases could not be easily returned to a central location. These nets would be used by pregnant mothers and for hospital beds where needed.

The overall cost of the programme was 328,230.88 Kina resulting in a cost of about 2.63 Kina or US\$0.80 per net delivered which was about 3% over the anticipated overall budget. There were overspends in car hire and human resources but this was balanced by savings in fuel and contingency costs.

The programme in Jiwaka went very well in all areas despite the ongoing elections. The only problem faced was that some local people thought that the containers of nets contained ballot

papers so each container had to be opened with local people together with police and defence forces observing to prove that no ballot papers were within.

Other than this, it can be said that support given by the provincial health authorities, the various health centres involved in the project and all community members was tremendous. Partners included the Provincial Government Health Services and church health services, particularly the Catholic, Lutheran, SDA, Nazarene and Evangelical Bible Church Health Services. Many others assisted including teachers and head masters, village councillors, village leaders, Village Health Volunteers (VHV), and many others too many to mention who helped the programme in individual or collective ways.

Feedback from partners and communities suggest they were happy with the methodology used as the process appeared transparent to all concerned. However, as always, there were a few families who complained that they did not receive enough nets but for the most part it is believed that this was a result of families not fully understanding the allocation system used.

Schedule

This distribution took place in the eighth year in which RAM has been involved in the distribution of nets with Provincial Health Authorities in PNG. The first five years of this programme were referred to as the Round Eight Global Fund Programme and the last two years as the New Funding Model for which RAM has received three years funding for the Global Fund for the period 2015 to 2017.

Survey and distributions were carried out as per the table below with the programme starting in Anglimp South Waghi and closely followed by North Waghi.

Table One
General Timetable Of Activities In Jiwaka

District	Survey		Distribution	
	Start	Finish	Start	Finish
Anglimp South Waghi	29.05.17	25.06.17	30.05.17	05.07.17
North Waghi	05.06.17	23.06.17	15.06.17	03.07.17

Background

Rotarians Against Malaria (RAM) is a nationally based organisation which was formed in 1997 by the Port Moresby Rotary Club in recognition of the tremendous burden that malaria imposes on the people of PNG.

RAM has a mandate to work in malaria control in Papua New Guinea and has been working for many years with the National Department of Health (NDOH) and other partners including bilateral agencies such as UNICEF and WHO (World Health Organisation), NGOs and church groups.

RAM’s most prominent activity during the early part of its existence has been in the supply of mosquito nets to the both commercial and NGO other partners on a cost recovery basis throughout PNG. In this respect, RAM was also a major partner to the NDOH during the Global Fund Round Three programme in the country. During this programme, RAM procured and delivered Long Lasting Insecticidal Nets (LLINs) to every province (and district where possible) in the country from 2004 to 2008 sufficient to cover 80% of the population. These nets were then delivered to household level by provincial health authorities.

For a variety of reasons, in 2009, the National Department of Health requested RAM to take over the coordination of the distribution of LLINs throughout PNG. Since 2010, RAM has coordinated the procurement and distribution of LLINs to provincial and district level throughout the country. However, for the distribution of nets to household level this has been jointly implemented with provincial, district and church health services. Between 2010 and 2016, RAM has coordinated the distribution of 7.5 million nets to household level and a further 1.1 million nets to pregnant women mothers and other vulnerable groups such as boarding students and inmates or correction centres.

RAM was awarded another three year contract by the Global Fund (known as the New Funding Model (NFM)) which will expire at the end of 2017 with a further contract now expected to cover the period 2018 to 2020. The contract is to continue with the coordination of the distribution of LLINs throughout PNG.



Fig.2 Training Of Volunteers In Kideng (Left) and Minj (Right)

For the New Funding Model of 2015 to 2017, Global Fund cut their funding which forced the National Department of Health to stratify the distribution of LLINs in different parts of PNG as there was no longer enough funds to cover all parts of the country. This stratification was based on malaria epidemiology and ease of access to health services. As a result of this PNG was divided into four zones:

- a) Areas which lie above 2000m in altitude will no longer receive LLINs as malaria transmission is not considered possible at these altitudes.
- b) Low lying areas of the country which have high malaria endemicity and poor access to health continue to have household distributions, and
- c) Highlands regions between 1500 to 2000m in altitude such as Mount Hagen which have low malaria endemicity and generally easy access to health services, these areas will now have nets given to under five children.
- d) In urban and peri-urban areas such as Port Moresby and Lae which lie in low lying areas where access to health is considered easy, no distribution or perhaps under five distributions will be carried out when funds are in short supply.

Most of Jiwaka come under Zones b and c. Referring to Fig. 11 it can be seen that there are a few villages that are slightly above 2000m which normally would not get nets but as they are so closely associated with lower areas, it was decided that these areas would also receive nets. Therefore, all villages in Anglimp South Waghi and North Waghi received LLINs at the rate of approximately one net for every two people.

However, it should be noted that for 2015 and 2016, many districts in the highlands either did not receive nets if they were high altitude above 2000m or had under five campaigns,

particularly in the areas between 1600 – 2000m though some areas below this altitude were also affected. Jiwaka fortunately was not affected by this but in the period of 2018 to 2020 unless further funds are found, many areas of Anglimp South Waghi and North Waghi may not receive LLINs during this period.

Funding shortages were even more acute for 2017 but during 2016, RAM has been very fortunate to get further funding from a British NGO called Against Malaria Foundation (AMF). In this agreement, AMF will purchase nets for PNG and the Global Fund will pay for their distribution. This has meant that in 2017, all targeted areas, except for those above 2000m such as in Tambul Nebilyer in Western Highlands Province will receive full household coverage.

One of the conditions of the AMF donation is that RAM would strengthen the way in which surveys are carried out. These new processes are described in the Methodology Section and Jiwaka is the fifth province where this new system was put into action.

For household distributions, all LLIN distributions regardless of where they are carried out must include a survey and a distribution phase though implementation methods may vary considerably depending on circumstance. RAM’s approach has been to concentrate on quality and develop methodologies that ensure that all recipients in an area actually receive nets and that this can be reported accurately.

The processes used by RAM include recording all family members by name, age, sex and relationship to household as well as giving each household surveyed a white receipt that confirms that they have been surveyed. One of the new innovative practices now being introduced is that surveys are carried out by village volunteers who before submitting lists for distribution of nets, must hang a summary of all the households they have surveyed in a public place so the villagers can see how many people have been recorded in each household. This is to ensure that everyone has been included and that non-existent people have not been included. This process is further strengthened by 5% of all households in each village being randomly resurveyed to verify that the survey volunteer has done their job properly.



Fig.3 – Training Of Volunteers In Aviamp

The other major change to the original PNG programme of 2004 to 2009 carried out by the NDOH is that nets are allocated to families on a needs basis rather than simply the number of people in the family. Data analysis of National Capital District (NCD) data has shown that this gives a ratio of nets needed to be about 47 for every 100 people. In the previous distribution of Round Three, nets were allocated at a rate of one net to every 2.5 people. With the programme only receiving 80% of needs, and most provinces distributing for example two nets to families of three, in practically every province, nets ran out before the end of the distribution. The RAM programme makes all attempts to assure that this does not happen by collecting all population information first and then allocating the nets based on needs as well as availability of nets to ensure that all families receive nets throughout any given province. The only scenario

where survey and net distribution may be simultaneous is in very remote locations where it is not practical to return a second time.

In terms of coordination, RAM officers are allocated to specific LLGs or health centres where they coordinate the programme together with local health staff. In this capacity, RAM officers act as facilitators in terms of technical guidance to district health teams in each LLG as well as acting as financial officers and assuring quality control of activities taking place.

Methodology

Prior to planning and all implementation, a master list of villages of Jiwaka was drawn up using data from the 2000 Census. Villages in the list are organised by LLG and Ward. In this master list, the estimated population for 2017 for each village is recorded which is estimated from the 2000 Census figures and the estimated annual growth rate for Jiwaka and also compared with previous surveys carried out by RAM in 2010 and 2013. With this data, the project manager of RAM worked together with the Provincial Health Office to create a budget and have a planning outline for the programme throughout the province. Much of the planning was the allocation and transport of nets to each of the health centres involved in the programme.

In terms of all further coordination and planning, the RAM teams worked in close coordination with the Provincial Health Team of Jiwaka. Jointly the main health facilities in each Local Level Government (LLG) areas (whether government or Church Based) were selected from which operations would be carried out. Each health facility identified staff members or non-health volunteers to be involved with the programme and these became the District Health Team (DHT) if health staff or team leaders (if not health staff) responsible for the survey and distribution of nets. Each DHT and team leaders worked in the area in which the health facility was based.

Using the master list of villages, it was possible to group all villages into areas to be covered by each health centre and estimate the number of teams and DHTs needed at each health centre to carry out the work. The RAM project officers were then assigned to specific health centres with whom they would work with to facilitate the household survey and the LLINs distribution in each LLG.

Before any activities take place, RAM officers are expected to work with health staff and other team leaders to make detailed plans of their activities for training, survey, verification and distribution of nets. This involves making maps of the area, deciding how many teams are needed, and then making detailed work plans for each of the team members. This process also involves verifying that no villages have been left out of the census list and that the whole area is covered.

Also prior to field activities in any given LLG, a social awareness campaign was carried out in all villages informing villagers of the upcoming survey and distribution. This was also used as an opportunity for RAM officers to become familiar with each area. During this process, key malaria messages were also discussed with villagers such as the need to use LLINs every night.

During the social awareness campaign, a one-day training meeting is normally held at each health facility for all DHT members in that area who together carry out a micro-planning exercise. These training and micro-planning sessions as well as all other activities associated with the programme are coordinated by RAM project officers together with health counterparts at provincial and district level. RAM officers also have the responsibility to ensure the LLINs operation kept in line with the original micro-plan and budget.

Survey

The survey was carried out in the following way.

- 1) When arriving at a village and before starting the census process, a meeting was held with village elders explaining the process.
- 2) If village elders have a list of all village occupants, the team would use this list to compile a census.
- 3) Where a village is small, e.g. less than 30 families, team members may carry out the census by themselves.
- 4) Where villages were large, village volunteers were identified with the assistance of the village chiefs, elders, health staff and councillors. One volunteer was chosen for each group of about 50 families with volunteers chosen by natural divisions in the village e.g. clans where one volunteer would make a list of only one clan. These volunteers were trained to carry out the survey by actually surveying houses with the team leaders supervising and assessing the recording. Once the team leader was confident that the volunteers knew the survey methodology, they were left to continue with the household survey with survey teams returning within an agreed period to verify the work of the survey volunteers, collect survey books and also to pay the survey volunteer if the work has been carried out correctly.
- 5) For each household surveyed, all family members who normally resided at the household for a minimum of nine months were recorded by Name, Age, Sex and Relationship to head of household. All names and other information was recorded in the survey book with one survey form being used for each household.
- 6) After surveying a house a white copy of the census form was given to the head of household or most senior person present in the household.
- 7) Where a whole household was absent, information was taken from the neighbours and the white survey form left with them.
- 8) In all cases, after the census/list was finished, all the information about the households and number of household members is entered into a summary sheet. This list is then hung in a public place where all villages can verify that the right number of family members for each household has been recorded and that all families have been included in the survey. After the list has been in a public place for 24 hours, then the volunteer requests for the RAM officer and or DHT to visit the village.
- 9) RAM officers and DHTs must visit three households randomly from each survey book (6%) and verify that the survey has been carried out correctly. Only when this has been done, then the volunteer can be paid.
- 10) If a village was surveyed by more than one volunteer, then volunteers are asked to work together so that lists can be hung together and the village volunteers can be verified at the same time. This process also ensures that households do not appear on more than one list. After this process, both the volunteers and the village elders sign a form to verify that this was done.
- 11) All village volunteers received a standard payment of 20 kina a day. Experience has shown that volunteers can usually only survey about 30 families a day, so for the most part, they would receive up to two days allowance to complete a survey book.
- 12) All volunteers are also given a small training manual. Contained in this training manual are key health education messages about malaria which volunteers are expected to discuss with households. This perhaps is the only project in PNG that is able to reach down to potentially every household in the country.

To aid with the survey, the master plan with names of all census units in all the wards in the district had been printed out and given to all the team leaders of the DHTs. This document also provides the projected population per census unit as well as other information which might be useful to the area concerned.

After getting data from each village, the information is immediately compared with the data on the master sheet. Where the surveyed population is very different from the projected population, the project staff make enquiries into the reasons for these discrepancies.

Following the survey, all data was entered into a computer where possible or entered into a master sheet of the area concerned. For each village, nets were allocated to each family on a needs basis and this is also entered into the computer or master sheet. This process ensured that all villages received nets and that there would be no shortfalls.

The needs basis in PNG is based on the assumption that children under the age of six sleep with their parents, after which boys and girls are grouped separately from their parents. Nets are also allocated based on the number of children in the house their ages, and whether there are other dependents living in the households such as grandparents. A full description of the allocation system can be obtained from RAM officers but suffice to say a family of four could receive between one to four nets depending on the sex and age of family members.



Fig.4 Giving Pre Distribution Talk In Banzwan (Left) And Village List Hung Up In Banzwan (Right)

Nets are allocated to each LLG based on assumed populations of each LLG and it was important prior to the distribution to ensure that when allocations had been carried out to families and villages that there were enough nets available to cover each and every family.

Distribution

There was no official launch for the LLINs distribution. However, prior to distribution there was a social awareness phase where the project teams informed communities about the arrival of the distribution teams, especially those accessible by road.

The LLINs were then distributed to teams depending on the needs of each village. The LLINs were then distributed by village or wards depending on whether villages were close together. In this latter case, a central location was identified in the ward and distribution of nets was carried out. In terms of distribution sites, villages were organised in different ways to make the flow of nets easy and effective. However, the actual organisation depended on each team and the structure of the various groups receiving nets.

All net packaging was opened at distribution with a district code printed on each net e.g. JWK17 for Jiwaka 2017. This code is added to identify nets to assist in future monitoring exercises as well as discouraging householders from selling the nets on the open market.

Some examples of the process used to control the crowd includes;

- Arranging the people according to the serial numbers in the survey books e.g. 72001 - 72050 and then calling the names and the serial numbers.
- Call the names of the owners of the households, collect the white copy and give the nets.
- Wait for everyone to come to the distribution site, collect all the white copies and sort the copies with the pink copies. Call the names on the white copies and give the nets.

Some of the following control methods were used.

- Everyone who presented with a white copy was given LLINs at the distribution site with LLINs only given to the owner of the house or a member of the house whose name is written on the back of the survey form.
- Those people who lost the white receipts were left to the end of each distribution, with nets only being issued if the name of the person collecting the nets was on the back of the pink copies.
- For those families who were absent at the time of distribution, their names were written in a form – MOSQUITO NETS HELD IN TRUST BY VILLAGE CHIEFS FORM and the nets allocated to missing families were given to chiefs or any person entrusted by the community with the forms for these families to collect their LLINs later.
- Householders are now being asked to make a thumb print as proof of delivery of nets to a household. The Global Fund had formally asked that householders should sign for delivery of nets. This was considered problematic as many householders are illiterate and even where householders can write, this process takes a long time in what is often a very chaotic and charged environment where speed is of the essence.

It should also be noted, that due to the very remote locations found in some LLGs of the province, surveys and distributions took place at more or less the same time in some places. This is particularly true for mountainous villages or small islands which might take several hours or days to reach. In these instances, estimations based on the 2000 Census data and local knowledge to pre-allocate nets to these areas. Teams were then dispatched to these areas with nets. On arrival in these remote places, surveys took place and were immediately followed by a distribution based on the survey results.

Other details

In the case of Jiwaka Province, all LLINs were delivered to Lae by ship from Vietnam (via Singapore) where they were custom cleared. The nets were transported to Mount Hagen from where they were sent to the Jiwaka Provincial Health Office. From the Jiwaka Provincial Health Office the containers were unpacked and distributed to health centres from where they were distributed to villages. In total seven containers of nets were used to bring nets to Jiwaka.

Results

TABLE TWO
Nets Distributed At District Level In Jiwaka

District	Population Of Targeted Areas In 2014	Estimated Target Population 2017	Population Surveyed 2017	House Holds Surveyed 2017	Nets Issued 2017	Growth Rate Against 2013 Survey	Nets Distributed Per 100 People
Anglimp South Waghi	142,383	152,435	156,254	29,778	75,855	3.15	48.5
North Waghi	94,281	100,937	99,487	17,914	48,753	1.81	49.0
Totals	236,664	253,373	255,741	47,692	124,608	2.62	48.7

This programme was covering an estimated target population of 253,373 in the two targeted districts. After survey and distribution, the project recorded within this targeted population 255,741 people (156,254 Anglimp South Waghi and 99,487 North Waghi). To this population were distributed 124,608 LLINs (75,855 Anglimp South Waghi and 48,753 North Waghi) giving an overall ratio of 48.7 LLINs distributed to every 100 people.

Table Two shows a summary of the population and nets distributed by district during this distribution and Table Three shows distribution by LLGs. Table Two also shows the population surveyed in 2014 and from this it can be calculated the annual growth rate of each and LLG. Growth rates of Western Highlands and Jiwaka had been calculated as being 2.7% and this data corroborates this growth very closely.

Referring to Table Four, it can be seen that a further 749 LLINs were donated to health centres as nets were surplus to requirement and in most cases could not be easily returned to a central location. These nets would be used by pregnant mothers and for hospital beds where needed. The distribution of these nets can be seen in Table Four.

TABLE THREE
Nets Distributed At LLG Level In Jiwaka

LLG	District	Target Population 2017	Population Surveyed 2017	House Holds Surveyed 2017	Nets Issued 2017	Growth Rate Against 2013 Survey	Nets Distributed Per 100 People
Anglimp	Anglimp South Waghi	61,646	61,089	11,271	29,907	1.99	49.0
South Waghi	Anglimp South Waghi	90,789	95,165	18,507	45,948	3.92	48.3
North Waghi	North Waghi	100,937	99,487	17,914	48,753	1.81	49.0
Totals		253,373	255,741	47,692	124,608	2.62	48.7

The overall cost of the programme was 328,230.88 Kina resulting in a cost of about 2.63 Kina or US\$0.80 per net delivered which was about 3% over the anticipated overall budget. There were overspends in car hire and human resources but this was balanced by savings in fuel and contingency costs.

TABLE FOUR
Nets Donated To Health Centres

District	LLG	HC	Donated
Anglimp South Waghi	Anglimp	Polga HC	40
Anglimp South Waghi	Anglimp	Kurki HC	75
Anglimp South Waghi	Anglimp	Kideng HC	118
Anglimp South Waghi	Anglimp	Aviamp HC	200
Anglimp South Waghi	South Waghi	Minj HC	35
North Waghi	North Waghi	Norba HC	123
North Waghi	North Waghi	Dona SHC	158
Final			749

The project also looked at radio or cell telephone coverage in the different parts of Jiwaka. Referring to Table Six, the data suggests that coverage of both cell networks and radio is generally good in Jiwaka with the exception of some remote places. However, despite this, it would appear that only about 25% of houses have a radio which would include a cell phone as most modern cell phones have a radio within them.

TABLE FIVE
Cost Of Programme In Jiwaka

Budget Line	Budget	Actual	Variances	% Variances
Human Resources	K106,350.00	K118,025.75	-11,675.75	111.0
Fuel Cost	K35,394.00	K28,919.00	6,475.00	81.7
Car Hire Cost	K152,000.00	K168,402.00	-16,402.00	110.8
Aircraft Hire Cost	K6,000.00	K6,136.25	-136.25	102.3
Stationeries/Supplies	K3,000.00	K4,573.98	-1,573.98	152.5
5% Contingency	K15,137.20	K2,173.90	12,963.30	14.4
Total	K317,881.20	K328,230.88	-10,349.68	103.3

TABLE SIX
Cell and Radio Coverage In Jiwaka

District	Villages	House Holds Surveyed	Digicel	Bmobile	City Phone	Houses with Radios	Villages With Radio Networks
Anglimp South Waghi	474	29,778	413	187	0	4,609	417
North Waghi	276	17,914	260	195	0	8,737	262
Total	750	47,692	673	382	0	13,346	679

The support given by the provincial health authorities, the various health centres involved in the project and all community members was tremendous. Partners included the Provincial and Regional Government Health Services and church health services, particularly the Catholic, Lutheran, SDA, Nazarene and Evangelical Bible Church Health Services. Many others assisted including teachers and head masters, village councillors, village leaders, Village Health Volunteers (VHV), and many others too many to mention who helped the programme in individual or collective ways.

Feedback from partners and communities suggest they were happy with the methodology used as the process appeared transparent to all concerned. However, as always, there were always a few families who complained that they did not receive enough nets but for the most part it is believed that this was a result of families not fully understanding the allocation system used.

Overall therefore it can be said that the programme in Jiwaka has been successful.



Fig.5 – Distributions In Aviamp (Left) And Dona (Right)

Observations

- Fig.6 shows the decrease of malaria from 2007 to 2015 in all provinces, Fig. 7 shows the actual malaria incidence in Jiwaka and Western Highlands compared with other provinces

and Fig.8 shows annual malaria trends from 2012 to 2016. In Jiwaka and Western Highlands, it can be seen from Fig.6 that malaria decreased from 2007 to 2015 by 86% which is one of the highest reductions of malaria in the country. This is also reflected in Fig.7 which shows that the incidence of malaria in Jiwaka is only 25 per 1000 people which is the lowest in the country in 2015 which has since further reduced to 15 per 1000. Fig. 8 and Fig.9 shows that the incidence of malaria in Jiwaka and Western Highlands has been continually low and fell even further following the LLIN distribution in 2014.

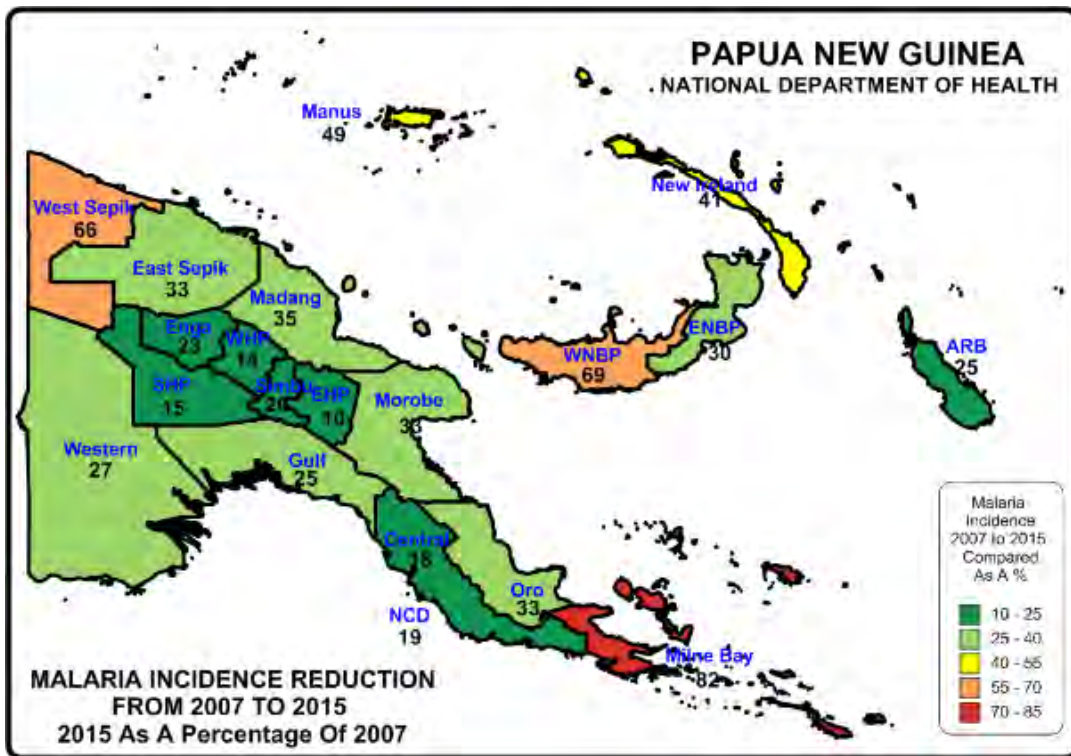


Fig.6 – Relative Reduction Of Malaria In Provinces Of PNG

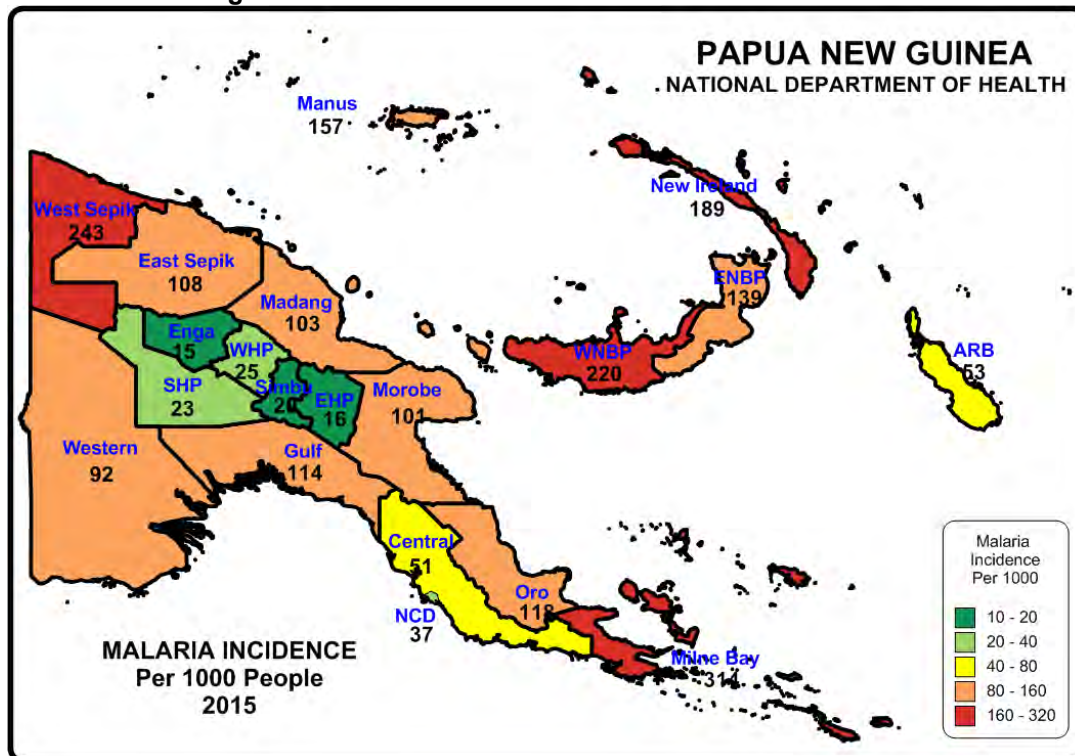


Fig.7 – Reported Malaria Incidence In 2015

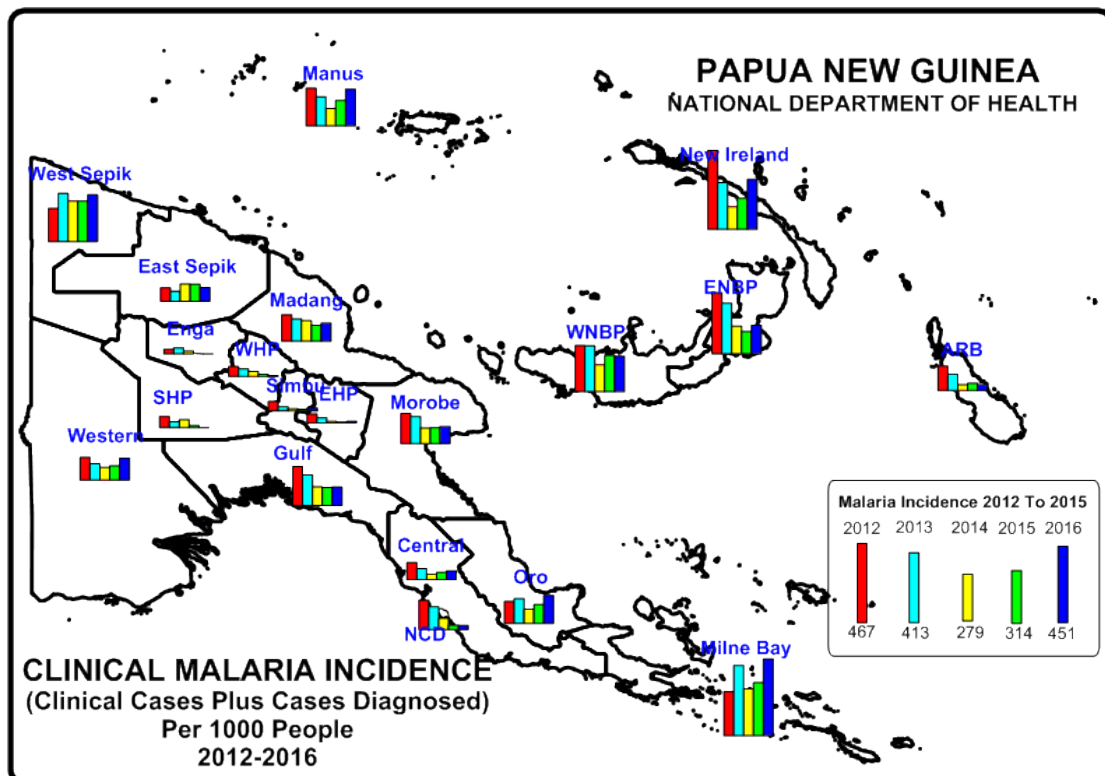


Fig. 8- Reported Malaria Incidence In PNG From 2012 To 2016

- From Fig. 11 it can also be calculated that 2.5% of the population of Jiwaka and Western Highlands live below 1200m altitude where malaria can be considered highly endemic and stable. A further 49% of the population live in the zone between 1600-2000 metres were *P. vivax* in the only parasite believed to be found at these altitudes with about 9.4% of the population living above 2000m.
- Overall, except in the low lying areas of Jimi District, malaria should not really be considered a problem in Jiwaka and this further distribution of nets should increase the protection of the population to malaria being reintroduced into the province. Nevertheless, attention should be given to the Jimi area to ensure that malaria does not become a problem in this low lying area.
- Jiwaka represents also the fifth province in which the new survey methodologies are being carried out. While some initial problems have been experienced with verification of survey volunteers, in general, it can be said that the new process has been welcomed by RAM officers and villagers alike.
- The very positive aspect of Jiwaka from a RAM perspective was the incredibly good support received by the provincial and health centre staff who assisted to make the project work efficiently and quickly. In terms of budget, the lessons learnt in other provinces allowed a much closer monitoring of the budget in Jiwaka through the decentralising of funding and net allocation. In this respect, each LLG of Jiwaka was treated as a separate financial unit which gave much more accountability. The very positive results of this is that the programme generally worked within budget and only a few nets remained unaccounted for at the end of the programme.
- However, despite all these difficulties, overall the project received positive comments from the provincial health office including those who had been involved in previous distributions in the province. It was generally felt that the system being advocated by RAM is transparent and fair. Though as always, some families did not feel they received as many nets as they thought they deserved. However, overall, it is felt that the programme managed to reach practically every household in the province except those mentioned above.

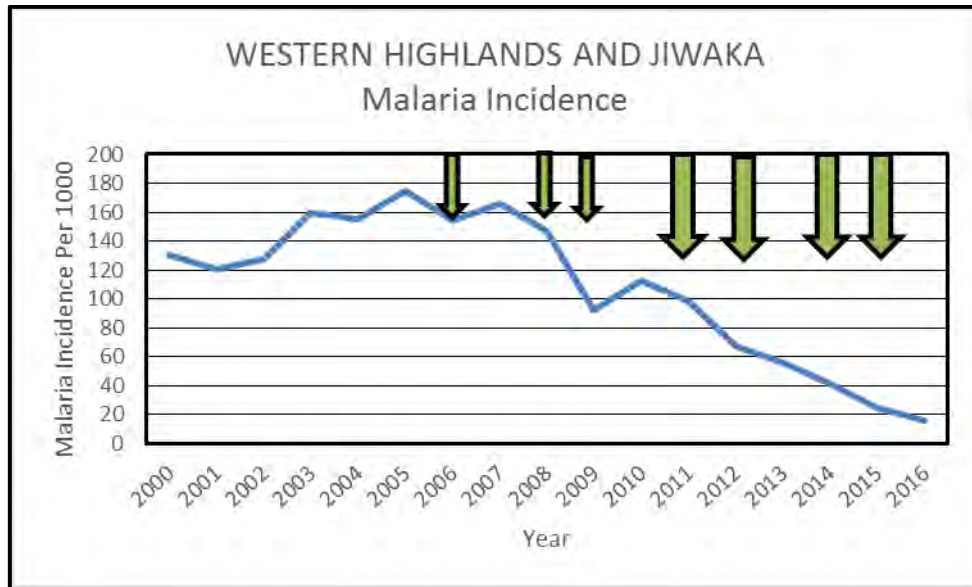


Fig. 9 – Malaria Incidence Versus Distribution Of Nets
 (Green Arrows Represent Years Of Distribution – Small Arrows Round 3 - Large Arrows Round 8)

Conclusions

Overall it can be said that the project was a success both in terms of results and joint coordination of the project by RAM field staff members together with provincial and district health staff and Catholic, Lutheran, SDA, Nazarene and Evangelical Bible Church Health Services who have a presence in the province. Through this collaboration, the data suggests that all villages and practically all families in those villages received nets.

The major achievement of the programme was also demonstrating that the new verification process introduced by RAM was practical and was generally accepted by both health staff, communities and volunteers as the survey system is now more transparent. One result of this is that RAM officers generally received far less complaints at the time of distribution than they have done in the past.

As with other provinces in the country where RAM has operated in over the last seven years, the methodologies used appeared practical and were openly welcomed by both villagers and implementers, particularly the practice of hanging up the list of names in the middle of the village following a survey: this allowed communities to feel that they were part of a transparent process. This is not to say that perhaps some extra people managed to slip into the books, but in general, it was felt that the system was fair and included practically everyone concerned. The use of the master lists also ensured that all villages were reached and accounted for.

The review of the data prior to the distribution was also important. This ensured that all villages and families received the correct numbers of nets. The Census Lists also from 2000 are also very important to ensure that survey teams reach all villages: without the complete list of villages, it would be very difficult to make a detailed report.

The greatest complaint still received by communities was the number of nets they received. Even though the team explain the logic of how the allocation of nets is calculated, some families were expecting one net per person, others expected it to be based on a fixed allocation based on the number of people in the family, and yet others thought they would be given nets based on the number of nets they stated they already had. This highlights that a better system of explaining the allocation system needs to be developed. In general, unlike some previous districts covered by RAM, DHTs of Jiwaka assisted in the allocation of the nets which meant

they were in a better position to explain the distribution system on the ground. Nevertheless, despite all the difficulties involved, it would appear that the vast majority of community members accepted the outcome and there were no real problems encountered.



Fig.10 – Distributions In Kideng

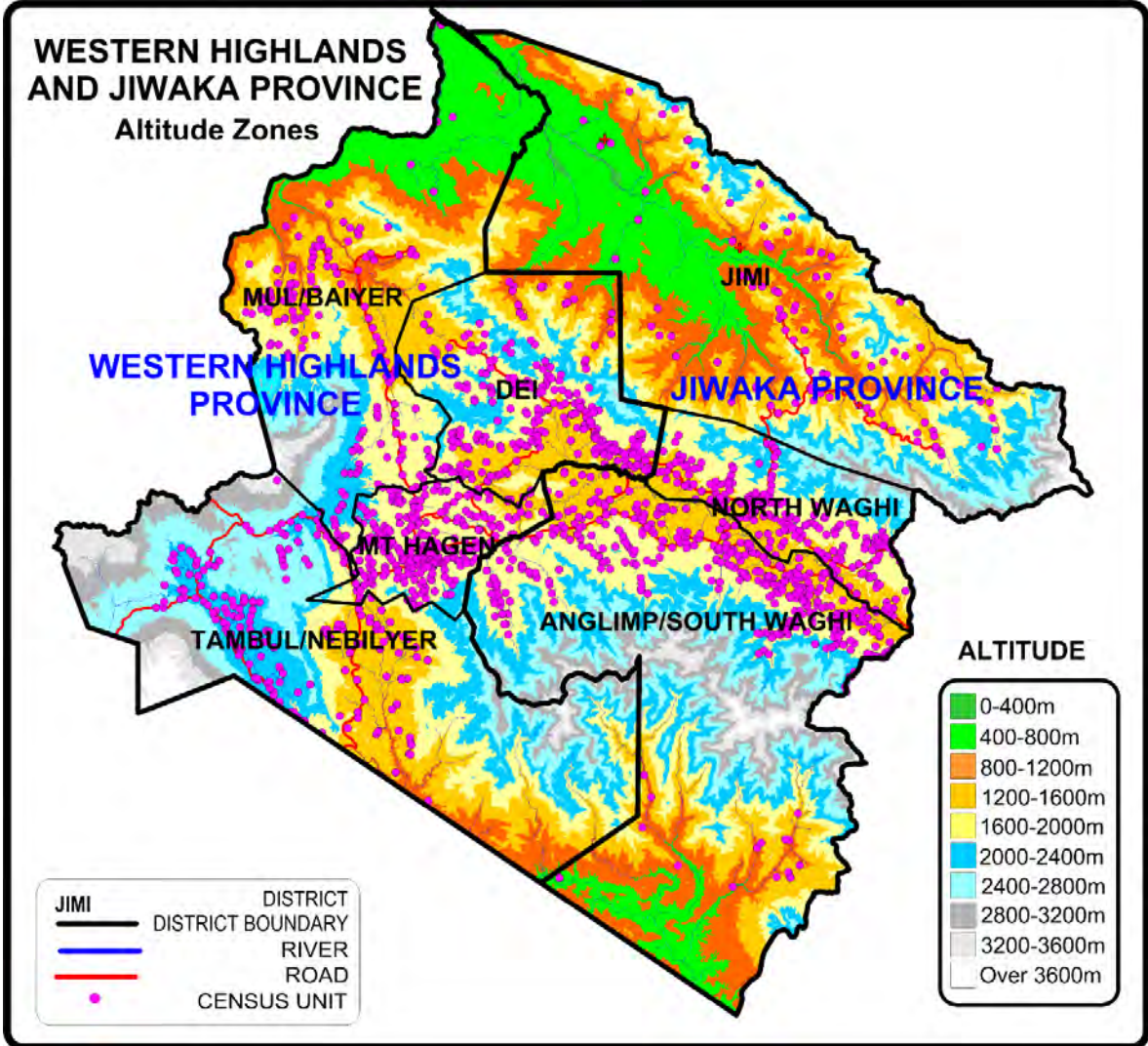


Fig.11 - Altitude Zones Of Western Highlands And Jiwaka Province

It is hoped that most of general problems encountered in the field are now familiar to RAM teams and as the teams move into other provinces, RAM officers become facilitators rather than implementers. This allows for much of the work to be carried out by District Health Teams. This will allow the survey and distribution of nets to occur much quicker even though it does mean that RAM officers may not have the same oversight as when they are more intimately involved with the project in carrying out the activities themselves. However, getting a balance of close supervision by RAM officers of activities and allowing activities to be carried out by others will be an ongoing challenge in the future. One process slows down the distribution time while the other speeds it up finding the right balance will be a challenge as this project continues.

Partners Involved In The Distribution

Partners:

1. Provincial and Regional Health Officers
2. Catholic, Lutheran, SDA, Nazarene and Evangelical Bible Church Health Services health staff.
3. Teachers and Head Masters
4. Village Councillors/Peace Officers/ Chiefs/Youths
5. Village Health Volunteers (VHV)
6. Adventist Aviation for Mount Au
7. All the Communities in the district

Acknowledgements

Rotarians Against Malaria would particularly like to thank Jenny Walep (Provincial Health Advisor) and her team, specially Kollie Bang (Superintendent District Health Services), Thadeus Turi (Superintendent Operations), Jacob Koma (Provincial Disease Control Officer) and John Mark (Provincial Malaria Supervisor) at provincial level for their excellent cooperation, good will and help in Jiwaka which made it a pleasure to work in Jiwaka for this operation. Without their assistance, this programme would not have been possible.

We would also like to thank all the health staff in various health centres who assisted in the programme. Below is a list of people specifically mentioned by RAM officers but there are a large number of other health staff and team leaders too many to mention who assisted with their time and help throughout the survey and distribution period.

To the church partners, RAM would like to sincerely thank the Catholic, Lutheran, SDA, Nazarene and Evangelical Bible Church Health Services for supporting RAM through its health services in their respective health centres.

RAM would also like to thank all the community members who welcomed RAM officers and health staff into their villages and assisted in making the programme work.

ACKNOWLEDGEMENT LIST – JIWAKA PROVINCE 2017

NAME	TITLE	PLACE OF WORK
Mr. Jacob Kupe	Officer In Charge	Polga Health Centre
Mr. Nicholas Mark	Nursing Officer	Polga Health Centre
Nang Bomai	District Health Officer	Jiwaka District
Sr. Christy	Officer In Charge	Banz 2 Health Centre
Sr. Mary Mathew	Officer In Charge	Fatima Health Centre
Wendy John	Office Clerk	Banz 2 Health Centre
Michael Malbe	Ambulance Driver	Fatima Health Centre

Mr. Jack Wambi	Nursing Officer	Kingdeng Health Centre
Haneng Tokali	Community Health Worker	Kingdeng Health Centre
Henny Wambi	Community Health Worker	Kingdeng Health Centre
Tracey Rummins	Community Health Worker	Ketepam Aidpost
Ps. Jacob Kop	Pastor	Ketepam Aidpost
Kuk Gola	Provincial HIV Aids Coordinator	Kudjip Hospital
Elis Konden	Ward Councillor	South Waghi Rural
Sr. Carrol Lawrence	Community Health Worker	Madan Health Centre
Ps. Joe Tine	Pastor	Madan United Church
Ps. Benjamin Tumbi	Pastor	Avi Holy Spirit Ministry Church
Mrs. Florence Tumbe	Officer In Charge	Dona Health Centre
Mr. Tom Wakrui	Officer In Charge	Norba Health Centre
Mr. John Opie	Health Staff	Norba Health Centre
Mr. Tony Baiyer	Health Staff	Norba Health Centre
Mr. Joseph Wates	Officer In Charge	Tsigmil Health Centre
Jack Dominic	Community Health Worker	Tsigmil Health Centre
Emmanuel Oswyn	Health Extension Officer	Tsigmil Health Centre
Joe Garry	Officer In Charge	Tombil Health Centre
Jack Frank	Health Extension Officer	Tombil Health Centre
Mr. Mathew Paul Leo	Officer In Charge	Aviamp Health Centre
Mr. John Tumu	Community Health Worker	Aviamp Health Centre
Mr. Eric James	Trainee Community health worker	Aviamp Health Centre
Mr. Max Yuwak	Church Elder	Mt. Au
Mr. James Ondku	Community Rep/Aviation Agent	Mt. Au Station
Mr. Elder Kapak	Church Elder	EBC Church – Mt Au Station
Peter Akupe	Care Health Worker	Mt. Au Health Centre

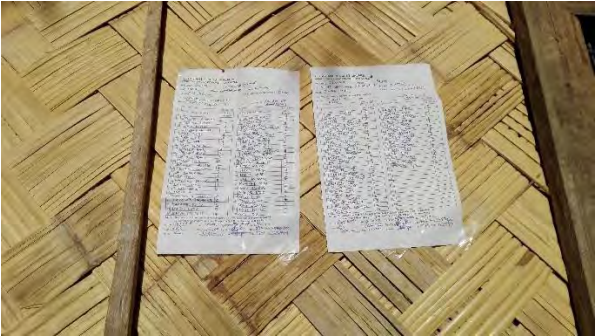
OTHER PHOTOGRAPHS



River Transport (Left) And Loading Cars (Right) In Kideng



Making Sure That No Ballot Papers Are In The Container At Jiwaka Provincial Health



Village Lists Hung Up In Banzwan For Village Inspection

OTHER PICTURES

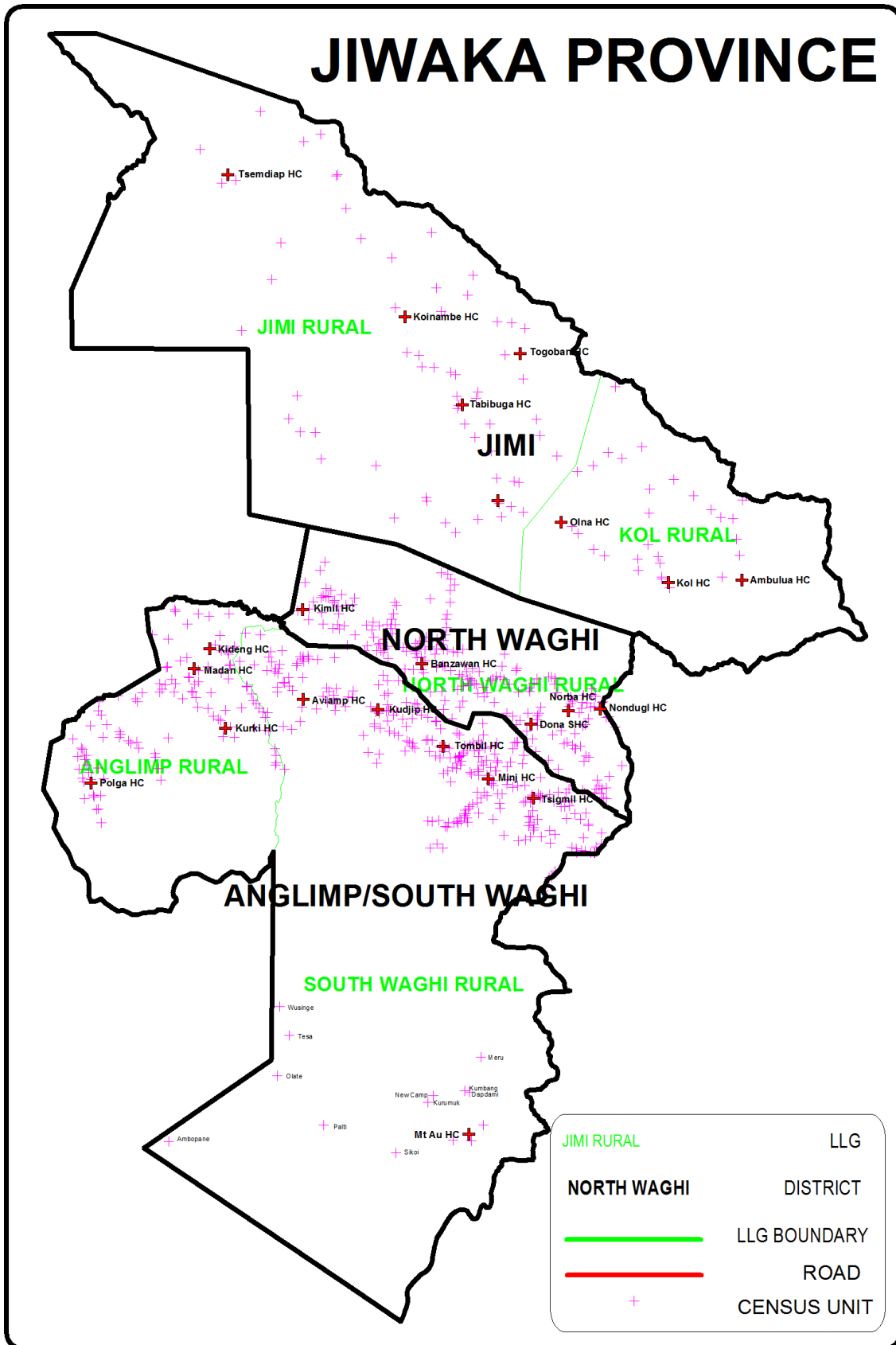


Volunteer Survey Verification



Distribution With RAM Management Carry Out A Verification Site Visit

ANNEX ONE - Map Of Jiwaka Showing Census Points Of 2000 Census



ANNEX TWO

**JIWAKA PROVINCE
ANGLIMP SOUTH WAGHI DISTRICT POPULATION 2017
LLIN DISTRIBUTION SUMMARY SHEET**

LLG	WARD	VILLAGE	Estimated 2017 Data Based On 2000 Census	Estimated 2017 Data Based On 2014 Data	Health Centre	Population Surveyed	House Holds Surveyed	Nets Issued	Date Of Distribution	Villages	Digicel	Bmobile	Citifon	Houses With Radios	Radio Networks	Comment
ANGLIMP SOUTH WAGHI DISTRICT			152,435	152,435		156,254	29,778	75,855		474	413	187	0	4,609	417	
ANGLIMP RURAL			67,455	61,646		61,089	11,271	29,907		156	130	67	0	2,953	129	
1	Kaip 1		2,211	1,442		1,405	354	678		4	4	0	0	237		
		Kaip 1a	529	406	Polga HC	351	100	172	02.07.17	1	1	0	0	99	NBC	Road
		Koip	668	357	Polga HC	478	100	221	02.07.17	1	1	0	0	42	NBC	Road
		Rukpa	423	344	Polga HC	238	60	119	03.07.17	1	1	0	0	3	NBC	Road
		Kaip 1b	592	334	Polga HC	338	94	166	02.07.17	1	1	0	0	93	NBC	Road
2	Kaip 2		2,445	3,056		2,581	600	1,239		9	9	0	0	187		
		Kaip 2	224	646	Polga HC	568	130	269	02.07.17	1	1	0	0	17	NBC	Road
		Ruldui	330	403	Polga HC	290	79	141	02.07.17	1	1	0	0	9	NBC	Road
		Polapena Kona	276	269	Polga HC	77	20	37	02.07.17	1	1	0	0	4	NBC	Road
		Tokuapena Kona	324	246	Polga HC	308	50	145	02.07.17	1	1	0	0	30	NBC	Road
		Pembunga	363	327	Polga HC	249	64	121	02.07.17	1	1	0	0	51	NBC	Road
		Oper	331	222	Polga HC	263	50	122	02.07.17	1	1	0	0	28	NBC	Road
		Kilinga	361	59	Polga HC	385	50	185	02.07.17	1	1	0	0	35	NBC	Road
		Kaip Community School	235	227	Polga HC	49	12	24	02.07.17	1	1	0	0	4	NBC	Road
		Ramdani	0	658	Polga HC	392	145	195	02.07.17	1	1	0	0	9	NBC	Road
3	Polga 1		1,114	1,100		1,342	398	759		3	3	0	0	0		
		Polga 1	309	207	Polga HC	396	99	194	02.07.17	1	1	0	0	0	NBC	Road
		Polgagena	472	453	Polga HC	203	100	197	02.07.17	1	1	0	0	0	NBC	Road
		Enga	333	440	Polga HC	743	199	368	02.07.17	1	1	0	0	0	NBC	Road
4	Polga 2		1,403	882		1,018	219	508		4	4	0	0	13		
		Polga 2	464	438	Polga HC	409	74	203	02.07.17	1	1	0	0	6	NBC	Road
		Kalapa	276	223	Polga HC	254	50	122	02.07.17	1	1	0	0	7	NBC	Road
		Menim	259	221	Polga HC	180	50	94	02.07.17	1	1	0	0	0	NBC	Road
		Lel	404	0	Polga HC	175	45	89	02.07.17	1	1	0	0	0	NBC	Road
5	Wurup 1		797	830		1,713	172	827		2	2	0	0	48		
		Wurup 1	227	367	Polga HC	637	100	304	02.07.17	1	1	0	0	48	NBC	Road
		Eka	570	463	Polga HC	1,076	72	523	02.07.17	1	1	0	0	0	NBC	Road
6	Wurup 2		3,165	1,948		2,384	462	1,094		7	6	0	0	383		
		Wurup 2	84	278	Polga HC					1						Included under Wurup Sing
		Wurup Sing	286	0	Polga HC	358	50	159	02.07.17	1	1	0	0	50	NBC	Road
		Pakum	660	315	Polga HC	304	52	144	02.07.17	1	1	0	0	1	NBC	Road
		Kandep Market	336	76	Polga HC	352	50	164	02.07.17	1	1	0	0	50	NBC	Road
		Warawau Pint	1,476	1,000	Polga HC	950	237	433	02.07.17	1	1	0	0	232	NBC	Road
		Wurup Pint	324	0	Polga HC	300	50	137	02.07.17	1	1	0	0	50	NBC	Road
		Kandep Block	0	280	Polga HC	120	23	57	02.07.17	1	1	0	0	0	NBC	
7	Wurup 3		2,169	1,995		3,039	482	1,467		4	3	0	0	202		
		Wurup 3	114	0	Polga HC					1						Included under Wurup Pena Kona
		Pulbulg	725	455	Polga HC	1,678	150	810	02.07.17	1	1	0	0	93	NBC	Road
		Wurup Pena Kona	295	608	Polga HC	548	119	262	02.07.17	1	1	0	0	0	NBC	Road
		Kokpena Kona	1,035	933	Polga HC	813	213	395	02.07.17	1	1	0	0	109	NBC	Road
8	Kiliga 1		2,019	705		1,483	359	723		4	4	0	0	125		
		Kiliga 1	522	345	Polga HC	341	86	161	03.07.17	1	1	0	0	30	NBC	Road
		Kurkur	642	0	Polga HC	563	138	280	03.07.17	1	1	0	0	44	NBC	Road
		Tapuk	284	0	Polga HC	196	50	98	03.07.17	1	1	0	0	22	NBC	Road
		Kontaina	570	360	Polga HC	383	85	184	03.07.17	1	1	0	0	29	NBC	Road
9	Kiliga 2		1,362	773		782	231	376		4	4	0	0	174		
		Kiliga 2	391	0	Polga HC	109	31	54	03.07.17	1	1	0	0	18	NBC	Road
		Koim	399	93	Polga HC	173	50	81	03.07.17	1	1	0	0	36	NBC	Road
		Wurup	276	297	Polga HC	152	50	74	03.07.17	1	1	0	0	36	NBC	Road
		Emuk	295	382	Polga HC	348	100	167	03.07.17	1	1	0	0	84	NBC	Road
10	Ulya		2,205	1,584		1,976	389	972		6	6	0	0	350		
		Ulya	483	468	Polga HC	481	100	232	03.07.17	1	1	0	0	88	NBC	Road
		Apra	587	204	Polga HC	225	49	109	03.07.17	1	1	0	0	38	NBC	Road
		Komon Crusher	371	234	Polga HC	604	94	292	03.07.17	1	1	0	0	98	NBC	Road
		Ulya Plantation	384	261	Polga HC	255	50	124	03.07.17	1	1	0	0	50	NBC	Road
		Ulya Settlement	380	173	Polga HC	221	46	123	03.07.17	1	1	0	0	35	NBC	Road
		Oga	0	245	Polga HC	190	50	92	03.07.17	1	1	0	0	41	NBC	Road
11	Panga		1,735	1,422		1,427	300	695		3	3	0	0	80		
		Panga	581	538	Polga HC	726	150	361	03.07.17	1	1	0	0	52	NBC	Road
		Panga Coffee Factory	398	404	Polga HC	432	99	204	03.07.17	1	1	0	0	28	NBC	Road
		Cri & Dpi Camp	756	480	Polga HC	269	51	130	03.07.17	1	1	0	0	0	NBC	Road
12	Kutibulug 1		3,774	2,270		2,471	400	1,267		5	5	4	0	0		
		Kutibulug	1,238	298	Kurki HC	545	97	313	30.06.17	1	1	1	0	0	NBC/FM	2X bks/Road
		Nguakona	742	391	Kurki HC	387	49	188	30.06.17	1	1	1	0	0	NBC/FM	1x bks/Road
		Kutumbulug C/S	709	320	Kurki HC	491	80	243	30.06.17	1	1	1	0	0	NBC/FM	2x bks/Road
		Komon Plantation	1,086	239	Kurki HC	609	106	301	30.06.17	1	1	1	0	0	NBC/FM	2x bks/Road
		Kuki Kupan	0	1,021	Kurki HC	439	68	222	28.06.17	1	1	0	0	0	NBC/FM	2X bks/Road
13	Kutibulug 2		1,264	722		1,115	199	542		3	3	2	0	0		
		Kutibulug 2	769	299	Kurki HC	298	50	145	02.07.17	1	1	0	0	0	NBC/FM	1X bks/Road
		Bunamulug	395	220	Kurki HC	598	100	286	02.07.17	1	1	1	0	0	NBC/FM	2x bks/Road
		Kupmandu	101	203	Kurki HC	219	49	111	02.07.17	1	1	1	0	0	NBC/FM	1x bks/Road
14	Ketepunga 1		4,197	6,321		4,793	852	2,508		14	11	11	0	0		
		Ketepunga 1	496	245	Kurki HC	445	99	269	29.06.17	1	1	1	0	0	NBC/FM	2x bks/Road
		Kuriki	358	907	Kurki HC					1						Included under Rogomp Station
		Apra	385	664	Kurki HC	582	94	283	01.07.17	1	1	1	0	0	NBC/FM	2x bks/Road

LLG	WARD	VILLAGE	Estimated 2017 Data Based On 2000 Census	Estimated 2017 Data Based On 2014 Data	Health Centre	Population Surveyed	House Holds Surveyed	Nets Issued	Date Of Distribution	Villages	Digicel	Bmobile	Citifon	Houses With Radios	Radio Networks	Comment
		Kora 1	521	966	Kurki HC	774	138	389	01.07.17	1	1	1	0	0	NBC/FM	3x bks/Road
		Ketepunga 2	314	423	Kurki HC					1						Non Existant
		Kumbulumb	451	285	Kurki HC	361	72	195	29.06.17	1	1	1	0	0	NBC/FM	2x bks/Road
		Kandapai	232	212	Kurki HC	308	39	104	01.07.17	1	1	1	0	0	NBC/FM	1x bk/Road
		Kora 2	331	966	Kurki HC	553	100	279	01.07.17	1	1	1	0	0	NBC/FM	2x bks/Road
		Rapei	538	236	Kurki HC					1						Non Existant
		Rebiamulg	477	494	Kurki HC	545	96	300	29.06.17	1	1	1	0	0	NBC/FM	2x bks/Road
		Kuli Catholic Mission	93	185	Kurki HC	268	40	153	30.06.17	1	1	1	0	0	NBC/FM	1x bk/Road
		Merepung	0	243	Kurki HC	339	49	165	29.06.17	1	1	1	0	0		1x bk/Road
		Mamna	0	256	Kurki HC	402	91	208	01.07.17	1	1	1	0	0	NBC/FM	2x bks/Road
		Kapmolgi	0	240	Kurki HC	216	34	163	01.07.17	1	1	1	0	0	NBC/FM	1x bks/Road
15	Rogomp 1		1,440	1,458		1,324	284	672		5	3	0	0	0		
		Rogomp 1	349	223	Kurki HC					1						Non Existant
		Kartanim	281	440	Kurki HC	479	100	231	01.07.17	1	1	0	0	0	NBC/FM	2x bks/Road
		Negan	264	256	Kurki HC	545	134	284	01.07.17	1	1	0	0	0	NBC/FM	3x bks/Road
		Green Market	335	251	Kurki HC	300	50	157	01.07.17	1	1	0	0	0	NBC/FM	1x bks/Road
		Kalgup	212	287	Kurki HC					1						Non Existant
16	Rogomp 2		1,680	2,358		2,031	391	1,102		8	8	0	0	0		
		Rogomp 2	324	239	Kurki HC	195	40	108	01.07.17	1	1	0	0	0	NBC/FM	1x bks/Road
		Muk	425	523	Kurki HC	193	50	106	01.07.17	1	1	0	0	0	NBC/FM	1x bks/Road
		Ramuk	256	173	Kurki HC	237	45	126	01.07.17	1	1	0	0	0	NBC/FM	1x bks/Road
		Tuning	354	470	Kurki HC	300	61	160	01.07.17	1	1	0	0	0	NBC/FM	2x bks/Road
		Kumie	322	258	Kurki HC	202	50	117	01.07.17	1	1	0	0	0	NBC/FM	1x bks/Road
		Wilimi	0	207	Kurki HC	320	45	172	01.07.17	1	1	0	0	0	NBC/FM	1x bks/Road
		Walagmi	0	241	Kurki HC	172	50	103	01.07.17	1	1	0	0	0	NBC/FM	1x bks/Road
		Station	0	247	Kurki HC	412	50	210	01.07.17	1	1	0	0	0	NBC/FM	1x bks/Road
17	Ketepam 1		2,876	1,117		534	87	268		5	1	1	0	0		
		Ketepam 1	549	439	Kideng HC	534	87	268	05.07.17	1	1	1	0	0	NBC/FM	Road
		Rokraka	687	514	Aviamp HC					1						Included under Bunum
		Kumei	278	0	Aviamp HC					1						Abandoned
		Pugkuk	837	0	Aviamp HC					1						Abandoned
		Kiltmulu	526	164	Aviamp HC					1						Included under Bunum
18	Ketepam 2		2,502	1,916		1,308	217	626		5	4	4	0	0		
		Ketepam 2	565	492	Kideng HC	288	47	116	05.07.17	1	1	1	0	0	NBC/FM	
		Andu	399	425	Kideng HC	193	33	96	05.07.17	1	1	1	0	0	NBC/FM	Road
		Ruti	612	470	Kideng HC	259	39	130	05.06.17	1	1	1	0	0	NBC/FM	Road
		Pulgmi	606	529	Kideng HC	568	98	284	05.07.17	1	1	1	0	0	NBC/FM	Road
		Kerpi	319	0	Kideng HC					1						Abandoned
19	Papen		3,509	4,326		3,770	667	1,851		9	7	6	0	144		
		Papen	912	197	Kideng HC	804	100	388	03.07.17	1	1	1	0	4	NBC/FM	Road
		Road Junction Aog	955	850	Kideng HC	730	150	354	03.07.17	1	1	1	0	0	NBC/FM	Road
		Bom Kaukau Market	769	561	Kideng HC	401	70	197	03.07.17	1	1	1	0	47	NBC/FM	Road
		Malenga Kora	480	821	Kideng HC	787	142	398	03.07.17	1	1	1	0	73	NBC/FM	Road
		Meng	357	495	Aviamp HC	551	100	268	29.06.17	1	1	0	0	15	NBC/FM	Road
		Papen Community School	36	0	Kideng HC	125	19	63	03.07.17	1	1	1	0	1	NBC/FM	
		Kunisent	0	592	Kideng HC	372	86	183	03.07.17	1	1	1	0	4	NBC/FM	
		Negan Flower	0	535	Kideng HC					1						Included under Tun, South Waghi
		Goimben Dal	0	275	Kideng HC					1						Included under Tun, South Waghi
20	Kindeng 1		3,304	4,265		4,113	779	2,055		6	6	5	0	40		
		Kindeng Block Road 1	800	1,110	Kideng HC	1,064	164	530	02.07.17	1	1	1	0	19	FM 100	Road
		Kindeng Block Road 2	911	767	Kideng HC	627	109	313	30.06.17	1	1	1	0	15	FM 100	Road
		Kindeng Factory	666	824	Kideng HC	634	149	321	30.06.17	1	1	1	0	0	FM 100	Road
		Kindeng Tea	695	870	Kideng HC	1,085	240	539	30.06.17	1	1	1	0	0	FM 100	Road
		Kindeng Dpi	232	0	Kideng HC	244	33	122	30.06.17	1	1	1	0	6	FM 100	Road
		Kindeng Block Road 1B	0	694	Kideng HC	459	84	230	02.07.17	1	1	1	0	0	FM 100	Road
21	Kindeng 2		4,802	5,278		4,866	966	2,430		8	7	7	0	130		
		Kindeng 2	931	745	Kideng HC					1						Ward name, No Village
		Kindeng Block Road 3	1,209	474	Kideng HC	858	134	428	01.07.17	1	1	1	0	28	FM 100	Road
		Kindeng Block Road 4	1,503	1,012	Kideng HC	1,114	244	558	01.07.17	1	1	1	0	58	FM 100	Road
		Kindeng Community School	69	298	Kideng HC	228	50	114	30.06.17	1	1	1	0	4	FM 100	Road
		Kindeng Coffee Plnt	1,010	1,192	Kideng HC	1,072	250	536	30.06.17	1	1	1	0	28	FM 100	Road
		Kindeng Health Centre	79	0	Kideng HC	135	22	68	30.06.17	1	1	1	0	5	FM 100	Road
		Kora @ Kindeng 2Ward	0	568	Kideng HC	313	64	159	01.07.17	1	1	1	0	0	FM 100	Road
		Kindeng 2 (6)	0	988	Kideng HC	1,146	202	567	01.07.17	1	1	1	0	7	FM 100	Road
22	Mugumamp		2,017	2,374		1,659	357	827		5	5	5	0	97		
		Mugumamp F0rest	414	599	Kideng HC	343	75	172	01.07.17	1	1	1	0	0	FM100	Road
		Mumi Project	361	273	Kideng HC	145	32	72	01.07.17	1	1	1	0	0	FM100	Road
		Mapi Project	698	684	Kideng HC	515	133	258	01.07.17	1	1	1	0	14	FM100	Road
		Rotep Project	403	509	Kideng HC	410	67	202	01.07.17	1	1	1	0	48	FM100	Road
		Rom	142	309	Kideng HC	246	50	123	01.07.17	1	1	1	0	35	FM100	Road
23	Madan		2,966	2,287		3,345	552	1,498		7	7	7	0	226		
		Madan Block Road 1	221	271	Madan HC	266	50	119	29.06.17	1	1	1	0	46	NBC WHP	Road
		Madan Block Road 2	456	259	Madan HC	283	50	127	29.06.17	1	1	1	0	47	NBC WHP	Road
		Madan Block Road 3	661	480	Madan HC	625	101	281	29.06.17	1	1	1	0	52	NBC WHP	Road
		Madan Market	631	614	Madan HC	1,450	264	654	29.06.17	1	1	1	0	42	NBC WHP	Road
		Kalap Market	175	94	Madan HC	390	43	168	29.06.17	1	1	1	0	27	NBC WHP	Road
		Madang Reserve 1	548	326	Madan HC	312	41	140	29.06.17	1	1	1	0	12	NBC WHP	Road
		Madan Reserve 2	273	244	Madan HC	19	3	9	29.06.17	1	1	1	0	0	NBC WHP	Road
24	Avi 1		1,749	2,270		3,907	543	1,762		3	3	3	0	205		
		Avi 1	919	758	Madan HC	1,007	150	459	29.06.17	1	1	1	0	39	NBC WHP	Road
		Oben Road	343	668	Madan HC	1,004	150	449	29.06.17	1	1	1	0	58	NBC WHP	Road
		Avi Community School	488	844	Madan HC	1,896	243	854	29.06.17	1	1	1	0	108	NBC WHP	Road

LLG	WARD	VILLAGE	Estimated 2017 Data Based On 2000 Census	Estimated 2017 Data Based On 2014 Data	Health Centre	Population Surveyed	House Holds Surveyed	Nets Issued	Date Of Distribution	Villages	Digicel	Bmobile	Citifon	Houses With Radios	Radio Networks	Comment
25	Avi 2		3,954	2,769		4,434	647	2,011		6	6	6	0	311		
		Avi 2	477	488	Madan HC	919	100	422	29.06.17	1	1	1	0	51	NBC WHP	Road
		Pen Road	906	274	Madan HC	760	98	343	29.06.17	1	1	1	0	62	NBC WHP	Road
		Avi Market	552	767	Madan HC	910	150	410	29.06.17	1	1	1	0	49	NBC WHP	Road
		Kumunga	624	703	Madan HC	925	150	417	29.06.17	1	1	1	0	68	NBC WHP	Road
		Waghi Rev Blk	1,261	457	Madan HC	663	99	298	29.06.17	1	1	1	0	35	NBC WHP	Road
		Wesleyan B/College	134	80	Madan HC	257	50	121	29.06.17	1	1	1	0	46	NBC WHP	Road
26	Dopdop 1		3,823	2,660		915	150	452		9	2	2	0	0		
		Dopdop 1	167	0	Kurki HC					1						Included under Klunga
		Lgatep	844	848	Kurki HC					1						Non Existant
		Klunga	635	466	Kurki HC					1						Non Existant
		Kamdaka 1	350	241	Kurki HC	272	50	138	30.06.17	1	1	1	0	0	NBC/FM	1x bk/Road
		Anda Upper	491	300	Kurki HC	643	100	314	30.06.17	1	1	1	0	0	NBC/FM	2x bks/Road
		Lower Anda	451	436	Kurki HC					1						Included under Anda Upper
		Kamdaka 2	137	368	Kurki HC					1						Does not exit
		Kulki 1	327	0	Kurki HC					1						Does not exit
		Kulki 2	420	0	Kurki HC					1						Does not exit
27	Dopdop 2		2,972	3,517		1,354	214	698		8	4	4	0	1		
		Dopdop 2	325	148	Kurki HC					1						Non Existant
		Mega	357	417	Kurki HC	265	47	129	01.07.17	1	1	1	0	0	NBC/FM	x1 bk/Road
		Eltai	557	783	Kurki HC	383	36	218	01.07.17	1	1	1	0	0	NBC/FM	1x bk/Road
		Ulglmug	646	463	Kurki HC	143	31	71	29.06.17	1	1	1	0	0	NBC/FM	1x bk/Road
		Kapmuli	387	271	Kurki HC					1						Non Existant
		Kenjip	483	520	Kurki HC					1						Included under Kamdaga
		Anglimp Station	218	629	Kurki HC	563	100	280	01.07.17	1	1	1	0	1	NBC/FM	x1 bks/Road
		Aura/Kurikeri	0	285	Kurki HC					1						Included under Ketepung/Murupeng
SOUTH WAGHI RURAL			84,980	90,789		95,165	18,507	45,948		318	283	120	0	1,656	288	
1	Aviamp 3		7,891	7,177		7,509	1,419	3,692		14	11	0	0	468		
		Menjim	950	644	Aviamp HC2	279	50	136	28.06.17	1	1	0	0	0	Eagle FM	Road
		Rumur	1,160	857	Aviamp HC2	1,366	305	709	28.06.17	1	1	0	0	217	Eagle FM	Road
		Kemning	458	491	Aviamp HC2					1						Included under beming
		Bunum	1,632	1,983	Aviamp HC2	1,332	250	642	29.06.17	1	1	0	0	63	Eagle FM	Road
		Beming	1,356	1,050	Aviamp HC2	827	149	410	28.06.17	1	1	0	0	0	Eagle FM	Road
		Tun	567	288	Aviamp HC2	1,554	199	699	30.06.17	1	1	0	0	19	Eagle FM	Road
		Tuman Naz.b/Coll	538	254	Aviamp HC2	222	56	109	28.06.17	1	1	0	0	0	Eagle FM	Road
		Simbu Block	448	494	Aviamp HC2					1						Included under Keram block
		Kinzka Block	373	836	Aviamp HC2	702	160	378	29.06.17	1	1	0	0	69	Eagle FM	Road
		Nondugl Block	409	281	Aviamp HC2					1						Included under Keram block
		Waghi flood		NEW	Aviamp HC2	198	50	97	30.06.17	1	1	0	0	34	Eagle FM	Road
		Menjim Crasher		NEW	Aviamp HC2	267	50	131	29.06.17	1	1	0	0	0	Eagle FM	Road
		Minning		NEW	Aviamp HC2	439	100	216	30.06.17	1	1	0	0	16	Eagle FM	Road
		Waghi kona		NEW	Aviamp HC2	323	50	165	29.06.17	1	1	0	0	50	Eagle FM	Road
2	Aviamp Plnt		3,744	3,288		3,494	706	1,720		15	11	0	0	157		
		Factory	200	268	Aviamp HC2	266	50	114	27.06.17	1	1	0	0	36	Eagle FM	Road
		Nursery	164	180	Aviamp HC2	249	42	122	27.06.17	1	1	0	0	0	Eagle FM	Road
		Aviamp Tea & coffee	333	0	Aviamp HC2					1						
		Sepik Compound	88	132	Aviamp HC2	154	33	75	27.06.17	1	0	0	0	0	Eagle FM	Road
		Mendi Compound	270	133	Aviamp HC2	75	18	37	29.06.17	1	1	0	0	0	Eagle FM	Road
		Kandep Compound	115	204	Aviamp HC2					1						Covered uner Keram block
		Tambul Compound	84	72	Aviamp HC2	130	24	64	27.06.17	1	1	0	0	0	Eagle FM	Road
		Gumine Block	221	115	Aviamp HC2	71	22	35	27.06.17	1	1	0	0	13	Eagle FM	Road
		Keram Community School	238	153	Aviamp HC2	109	18	49	29.06.17	1	1	0	0	16	Eagle FM	Road
		Pugmi Rest Block	11	240	Aviamp HC2					1						Covered under Pugmi DPI
		Kigaba West 1	330	298	Aviamp HC2	235	50	144	29.06.17	1	1	0	0	8	Eagle FM	Road
		Pugmi Dpi	671	279	Aviamp HC2	483	94	251	29.06.17	1	1	0	0	35	Eagle FM	Road
		Kigaba St'tmt	301	246	Aviamp HC2	281	69	140	30.06.17	1	1	0	0	22	Eagle FM	Road
		Kigaba East Plt	200	453	Aviamp HC2	558	100	264	29.06.17	1	1	0	0	27	Eagle FM	Road
		Keram Block	516	514	Aviamp HC2	883	186	425	29.06.17	1	1	0	0	0	Eagle FM	Includes kandep Compound
3	Aviamp 2		3,367	3,626		3,470	856	1,746		8	7	0	0	242		
		Aviamp 2	706	0	Aviamp HC2	560	150	276	29.06.17	1	1	0	0	95	Eagle FM	Road
		Popun	519	912	Aviamp HC2	597	150	300	30.06.17	1	1	0	0	60	Eagle FM	Road
		Panjin	687	745	Aviamp HC2	672	188	369	28.06.17	1	1	0	0	24	Eagle FM	Road
		Kaim	311	521	Aviamp HC2	931	200	454	29.06.17	1	1	0	0	13	Eagle FM	Some kope popn move and settled here
		Kope 1	507	702	Aviamp HC2	177	41	86	30.06.17	1	1	0	0	0	Eagle FM	Road
		Kope 2	485	512	Aviamp HC2	323	77	158	30.06.17	1	1	0	0	0	Eagle FM	Road
		Nazarene Cir.	153	90	Aviamp HC2					1						Included under Aviamp Hc and college
		Aviamp HC and Colledge	0	143	Aviamp HC2	210	50	103	01.07.17	1	1	0	0	50	Eagle FM	
4	Aviamp 1		1,716	1,988		1,721	350	817		5	5	0	0	173		
		Aviamp 1	328	928	Aviamp HC2	600	115	291	29.06.17	1	1	0	0	90	Eagle FM	Road
		Kumdiku	434	455	Aviamp HC2	249	50	120	30.06.17	1	1	0	0	0	Eagle FM	Road
		Kugmi	305	187	Aviamp HC2	235	50	100	28.06.17	1	1	0	0		Eagle FM	Road
		Rutban	374	309	Aviamp HC2	259	50	118	28.06.17	1	1	0	0	2	Eagle FM	Road
		Aviamp Community School	275	109	Aviamp HC2	378	85	188	29.06.17	1	1	0	0	81	Eagle FM	Road
5	Kauwi		3,086	5,212		4,447	894	2,132		9	9	0	0	0		
		Kauwi	647	1,094	Kudjip HC	719	123	342	17.06.17	1	1	0	0	0	FM Jiwaka	Road
		Kami	331	502	Kudjip HC	443	100	217	17.06.17	1	1	0	0	0	FM Jiwaka	Road
		Pogromb	331	470	Kudjip HC	351	79	175	17.06.17	1	1	0	0	0	FM Jiwaka	Road
		Kikald	200	235	Kudjip HC	167	40	80	17.06.17	1	1	0	0	0	FM Jiwaka	Road
		Kupa	328	415	Kudjip HC	396	64	228	17.06.17	1	1	0	0	0	FM Jiwaka	Road
		Polki	474	567	Kudjip HC	323	89	164	17.06.17	1	1	0	0	0	FM Jiwaka	Road
		Pulmar	440	482	Kudjip HC	391	100	186	17.06.17	1	1	0	0	0	FM Jiwaka	Road

LLG	WARD	VILLAGE	Estimated 2017 Data Based On 2000 Census	Estimated 2017 Data Based On 2014 Data	Health Centre	Population Surveyed	House Holds Surveyed	Nets Issued	Date Of Distribution	Villages	Digicel	Bmobile	Citifon	Houses With Radios	Radio Networks	Comment
		Kagbug	196	882	Kudjip HC	1,055	200	493	17.06.17	1	1	0	0	0	FM Jiwaka	Road
		Simbu Block	137	566	Kudjip HC	602	99	247	17.06.17	1	1	0	0	0	FM Jiwaka	Road
	6	Kubagang	3,829	4,905		3,829	800	1,815		10	8	0	0	0		
		Kubagang	603	930	Kudjip HC	625	116	301	17.06.17	1	1	0	0	0	FM Jiwaka	Road
		Baning 1	608	992	Kudjip HC	904	198	430	17.06.17	1	1	0	0	0	FM Jiwaka	Road
		Baning 2	445	366	Kudjip HC	602	95	288	17.06.17	1	1	0	0	0	FM Jiwaka	Road
		Oi	208	296	Kudjip HC	285	82	133	17.06.17	1	1	0	0	0	FM Jiwaka	Road
		Apen	609	570	Kudjip HC	350	60	165	17.06.17	1	1	0	0	0	FM Jiwaka	Road
		Kiglad	148	90	Kudjip HC					1						Emigrated
		Mt. Tapi	278	119	Kudjip HC	206	44	102	17.06.17	1	1	0	0	0	FM Jiwaka	Road
		Alois C/Factory	298	669	Kudjip HC	390	83	178	17.06.17	1	1	0	0	0	FM Jiwaka	Road
		Simbu Block	339	602	Kudjip HC					1					FM Jiwaka	Road
		Wagi /Kane Block	292	271	Kudjip HC	467	122	218	17.06.17	1	1	0	0	0	FM Jiwaka	Road
	7	Kungar 2	1,762	2,703		1,909	396	916		5	5	0	0	0		
		Kungar 2	246	0	Kudjip HC	167	39	90	18.06.17	1	1	0	0	0	FM Jiwaka	Ward name. No village
		Pasmal	483	837	Kudjip HC	591	83	267	18.06.17	1	1	0	0	0	FM Jiwaka	Road
		Kusin	243	724	Kudjip HC	352	92	184	18.06.17	1	1	0	0	0	FM Jiwaka	Road
		Kugan	462	622	Kudjip HC	476	116	231	18.06.17	1	1	0	0	0	FM Jiwaka	Road
		Kane	327	520	Kudjip HC	323	66	144	18.06.17	1	1	0	0	0	FM Jiwaka	Road
	8	Kungar 1	2,777	3,497		3,885	649	1,842		8	8	0	0	0		
		Kungar 1	451	0	Kudjip HC	506	40	242	19.06.17	1	1	0	0	0	FM Jiwaka	Ward name. No village
		Piltange	251	502	Kudjip HC	440	98	218	18.06.17	1	1	0	0	0	FM Jiwaka	Road
		Kunjil Kantri	581	770	Kudjip HC	866	152	406	18.06.17	1	1	0	0	0	FM Jiwaka	Road
		Pepik	328	675	Kudjip HC	868	169	416	20.06.17	1	1	0	0	0	FM Jiwaka	Road
		Wagamil	295	341	Kudjip HC	138	18	65	21.06.17	1	1	0	0	0	FM Jiwaka	Road
		Marangil	297	247	Kudjip HC	303	50	136	25.06.17	1	1	0	0	0	FM Jiwaka	Road
		Kopsip	403	634	Kudjip HC	418	58	204	18.06.17	1	1	0	0	0	FM Jiwaka	Road
		Pisaming	170	328	Kudjip HC	346	64	155	21.06.17	1	1	0	0	0	FM Jiwaka	Road
	9	Kudjip Plnt	3,673	3,171		3,157	616	1,538		18	10	0	0	0		
		Kudjip Tea Compound 1	546	532	Kudjip HC	371	81	183	17.06.17	1	1	0	0	0	FM Jiwaka	Road
		Kudjip Tea Compound 2	84	164	Kudjip HC	256	50	124	17.06.17	1	1	0	0	0	FM Jiwaka	Road
		Kudjip Tea Compound 4	180	0	Kudjip HC	172	43	84	19.06.17	1	1	0	0	0	FM Jiwaka	Included in comp 2
		Kudjip Coffee Comp'd 1	412	467	Kudjip HC	412	100	202	19.06.17	1	1	0	0	0	FM Jiwaka	Road
		Kudjip Coffee Comp'd 2	104	0	Kudjip HC	323	50	153	18.06.17	1	1	0	0	0	FM Jiwaka	Included in comp 1
		Kudjip Coffee Comp'd 3	216	197	Kudjip HC	170	29	76	17.06.17	1	1	0	0	0	FM Jiwaka	Road
		Kudjip Coffee Comp'd 4	114	0	Kudjip HC	229	50	117	18.06.17	1	1	0	0	0	FM Jiwaka	Included in comp 3
		Jimkina Plnt (1)	212	0	Kudjip HC					1						Included in mangara1
		Wabag Compound	81	366	Kudjip HC					1						Included under Mangara 1
		Damine Compound 1	136	252	Kudjip HC					1						Road
		Damine Compound 2	197	0	Kudjip HC					1						Included in comp 1
		Waghi Plnt (1)	355	233	Kudjip HC					1						Emigrated
		Waghi Plnt (2)	253	238	Kudjip HC					1						Emigrated
		Mangara (1)	128	400	Kudjip HC	459	100	232	17.06.17	1	1	0	0	0	FM Jiwaka	Road
		Mangara (2)	133	0	Kudjip HC	228	50	110	17.06.17	1	1	0	0	0	FM Jiwaka	Included in mangara1
		Wagamil 1	230	322	Kudjip HC	537	63	257	19.06.17	1	1	0	0	0	FM Jiwaka	Road
		Wagamil 2	167	0	Kudjip HC					1						Included in comp 1
		Wagamil 3	126	0	Kudjip HC					1						Included in comp 1
	10	Kudjip Hospital	777	867		1,419	223	651		4	4	0	0	0		
		Kudjip Hospital	598	505	Kudjip HC	603	100	279	20.06.17	1	1	0	0	0	FM Jiwaka	Road
		Kudjip Nursing College	106	273	Kudjip HC	317	49	152	20.06.17	1	1	0	0	0	FM Jiwaka	Road
		Kudjip Community School	73	0	Kudjip HC	155	31	73	20.06.17	1	1	0	0	0	FM Jiwaka	Included in Kudjip Hosp
		Kudjip Police station & Block	0	89	Kudjip HC	344	43	147	20.06.17	1	1	0	0	0	FM Jiwaka	Road
	11	Puri	2,084	2,782		3,694	731	1,788		10	10	0	0	0		
		Puri	633	1,071	Kudjip HC	1,160	159	550	21.06.17	1	1	0	0	0	FM Jiwaka	Road
		Pagem	292	308	Kudjip HC	424	100	203	20.06.17	1	1	0	0	0	FM Jiwaka	Road
		Munge	393	362	Kudjip HC	242	72	127	21.06.17	1	1	0	0	0	FM Jiwaka	Road
		Tupa	230	165	Kudjip HC	116	21	53	21.06.17	1	1	0	0	0	FM Jiwaka	Road
		Argnan	322	598	Kudjip HC	477	150	240	20.06.17	1	1	0	0	0	FM Jiwaka	Road
		Pukmar	205	279	Kudjip HC	512	88	246	20.06.17	1	1	0	0	0	FM Jiwaka	Road
		Piltage Community School	8	0	Kudjip HC	90	28	46	20.06.17	1	1	0	0	0	FM Jiwaka	included in Pukmar
		Mori		NEW	Kudjip HC	132	13	61	17.06.17	1	1	0	0	0	FM Jiwaka	Road
		Mise		NEW	Kudjip HC	296	50	142	20.06.17	1	1	0	0	0	FM Jiwaka	Road
		Kupals		NEW	Kudjip HC	245	50	120	20.06.17	1	1	0	0	0	FM Jiwaka	Road
	12	Kurumul 1	2,425	3,862		4,926	1,000	2,342		12	12	12	0	96		
		Kurumul 1	120	217	Tombil HC	220	50	109	23.06.17	1	1	1	0	0	NBC	Road
		Kugmil	267	269	Tombil HC	489	83	233	23.06.17	1	1	1	0	0	NBC	Road
		Milang	140	320	Tombil HC	375	100	185	23.06.17	1	1	1	0	15	NBC	Road
		Kasbal	253	256	Tombil HC	353	100	173	23.06.17	1	1	1	0	24	NBC	Road
		Kawil	172	742	Tombil HC	885	149	411	23.06.17	1	1	1	0	22	NBC	Road
		Kore	118	122	Tombil HC	148	43	75	23.06.17	1	1	1	0	0	NBC	Road
		Kilip	429	490	Tombil HC	424	100	205	23.06.17	1	1	1	0	8	NBC	Road
		Banamil	161	278	Tombil HC	355	78	171	23.06.17	1	1	1	0	2	NBC	Road
		Tamban	253	278	Tombil HC	623	100	288	23.06.17	1	1	1	0	4	NBC	Road
		Kurumul Tea/Coffee	319	491	Tombil HC	404	72	189	23.06.17	1	1	1	0	5	NBC	Road
		Kurumul Community School	2	83	Tombil HC	119	25	57	23.06.17	1	1	1	0	11	NBC	Road
		Kurumul Nazarene	191	317	Tombil HC	531	100	246	23.06.17	1	1	1	0	5	NBC	Road
	13	Kurumul 2	2,957	2,988		4,088	672	1,884		10	10	10	0	223		
		Kurumul 2	234	234	Tombil HC	116	19	52	23.06.17	1	1	1	0	1	NBC	Road
		Kunjimung	451	636	Tombil HC	789	150	371	23.06.17	1	1	1	0	122	NBC	Road
		Nokmar	551	387	Tombil HC	589	80	260	23.06.17	1	1	1	0	3	NBC	Road
		Kilang	338	211	Tombil HC	331	48	152	23.06.17	1	1	1	0	0	NBC	Road
		Maranban	106	308	Tombil HC	703	100	320	23.06.17	1	1	1	0	0	NBC	Road
		Usnag	289	320	Tombil HC	471	65	212	23.06.17	1	1	1	0	0	NBC	Road
		Anjinimp	456	272	Tombil HC	441	78	215	23.06.17	1	1	1	0	83		

LLG	WARD	VILLAGE	Estimated 2017 Data Based On 2000 Census	Estimated 2017 Data Based On 2014 Data	Health Centre	Population Surveyed	House Holds Surveyed	Nets Issued	Date Of Distribution	Villages	Digicel	Bmobile	Citifon	Houses With Radios	Radio Networks	Comment
		Kane Opamil	120	90	Tombil HC	63	15	31	23.06.17	1	1	1	0	1	NBC	Road
		Topi Okup	237	185	Tombil HC	78	18	36	23.06.17	1	1	1	0	13	NBC	Road
		Maranban Plnt	175	345	Tombil HC	507	99	235	23.06.17	1	1	1	0	0	NBC	Road
14	Tombil 1		3,264	4,151		3,168	769	1,560		15	14	14	0	108		
		Tombil 1	477	0	Tombil HC	191	86	113	24.06.17	1	1	1	0	11	NBC	
		Mitip 1	407	313	Tombil HC					1						Included under Maranban Platanion
		Nol	275	257	Tombil HC	451	65	203	24.06.17	1	1	1	0	0	NBC	Road
		Kupga	163	160	Tombil HC	98	29	56	24.06.17	1	1	1	0	0	NBC	Road
		Damne	117	193	Tombil HC	207	33	94	24.06.17	1	1	1	0	6	NBC	Road
		Damwaraknga	174	499	Tombil HC	281	68	137	24.06.17	1	1	1	0	14	NBC	Road
		Jimbinkoi	352	281	Tombil HC	319	72	158	24.06.17	1	1	1	0	6	NBC	Road
		Tok	87	278	Tombil HC	238	44	109	24.06.17	1	1	1	0	6	NBC	Road
		Kawil	289	625	Tombil HC	586	131	276	24.06.17	1	1	1	0	45	NBC	Road
		Kukpa	387	338	Tombil HC	324	84	157	24.06.17	1	1	1	0	1	NBC	Road
		Mitip 2	294	683	Tombil HC	137	30	66	24.06.17	1	1	1	0	0	NBC	Road
		Kugark Community School	63	224	Tombil HC	64	17	32	24.06.17	1	1	1	0	0	NBC	Road
		Tombil V/Centre	28	302	Tombil HC	44	44	44	24.06.17	1	1	1	0	0	NBC	Road
		Kugark V/c (Girls)	46	0	Tombil HC	146	48	77	24.06.17	1	1	1	0	19	NBC	
		Kugark Ebc Mission	107	0	Tombil HC	82	18	38	24.06.17	1	1	1	0	0	NBC	
15	Tombil 2		2,488	3,544		4,173	837	2,002		13	12	12	0	35		
		Tombil 2	109	323	Tombil HC	441	91	214	25.06.17	1	1	1	0	10	NBC	Road
		Goimil	333	0	Tombil HC	212	50	104	25.06.17	1	1	1	0	3	NBC	
		Piang	453	247	Tombil HC	243	50	114	25.06.17	1	1	1	0	1	NBC	Road
		Kukpa	186	331	Tombil HC	506	99	242	25.06.17	1	1	1	0	0	NBC	Road
		Taimil 1	305	638	Tombil HC	866	150	396	25.06.17	1	1	1	0	13	NBC	Road
		Koru	152	697	Tombil HC	475	98	252	25.06.17	1	1	1	0	2	NBC	Road
		Jimbil	230	223	Tombil HC	172	34	77	25.06.17	1	1	1	0	0	NBC	Road
		Taimil 2	384	440	Tombil HC	550	116	252	25.06.17	1	1	1	0	0	NBC	Road
		Tombil Community School	36	0	Tombil HC	46	11	21	25.06.17	1	1	1	0	0	NBC	Road
		Goimil Ebc	16	148	Tombil HC					1						Included under Goimil
		Sibil Plnt 1	44	157	Tombil HC	262	50	131	25.06.17	1	1	1	0	5	NBC	Road
		Tup Coffee Plantation	140	196	Tombil HC	175	40	90	25.06.17	1	1	1	0	0	NBC	Road
		Segenem Plantation	99	143	Tombil HC	225	48	109	25.06.17	1	1	1	0	1	NBC	Road
16	Kamang 1		1,223	1,337		1,104	254	543		7	7	0	0	0		
		Kamang 1	99	128	Minj HC	220	50	109	12.06.17	1	1	0	0	0	FM Jiwaka	Road
		Tumbang	290	235	Minj HC	173	38	85	12.06.17	1	1	0	0	0	FM Jiwaka	Road
		Bala	376	267	Minj HC	183	50	89	12.06.17	1	1	0	0	0	FM Jiwaka	Road
		Geubanem	63	52	Minj HC	61	17	30	12.06.17	1	1	0	0	0	FM Jiwaka	Road
		Djeckbil	182	139	Minj HC	88	21	44	12.06.17	1	1	0	0	0	FM Jiwaka	Road
		Sibil	193	456	Minj HC	342	71	168	12.06.17	1	1	0	0	0	FM Jiwaka	Road
		Tumbang Community School	21	61	Minj HC	37	7	18	12.06.17	1	1	0	0	0	FM Jiwaka	Road
17	Kamang 2		2,715	2,890		3,641	616	1,754		10	10	0	0	0		
		Kamang 2	49	80	Minj HC	141	32	67	22.06.17	1	1	0	0	0	FM Jiwaka	Road
		Bomba	200	247	Minj HC	200	44	97	13.06.17	1	1	0	0	0	FM Jiwaka	Road
		Mekitakil	354	252	Minj HC	314	39	151	13.06.17	1	1	0	0	0	FM Jiwaka	Road
		Kupand	510	369	Minj HC	408	77	199	13.06.17	1	1	0	0	0	FM Jiwaka	Road
		Kana	491	493	Minj HC	528	100	253	13.06.17	1	1	0	0	0	FM Jiwaka	Road
		Rot Bung	431	335	Minj HC	685	96	332	13.06.17	1	1	0	0	0	FM Jiwaka	Road
		Gusamp	393	683	Minj HC	753	118	361	13.06.17	1	1	0	0	0	FM Jiwaka	Road
		Bilu Bala	104	266	Minj HC	278	50	133	13.06.17	1	1	0	0	0	FM Jiwaka	Road
		Simil Waghi Ebc Mission	71	82	Minj HC	218	37	105	13.06.17	1	1	0	0	0	FM Jiwaka	Road
		Simil Waghi V/Center	112	83	Minj HC	116	23	56	13.06.17	1	1	0	0	0	FM Jiwaka	Road
18	Anginmoi		3,241	3,138		3,507	694	1,694		9	9	0	0	0		
		Anginmoi 1	605	356	Minj HC	443	100	213	14.06.17	1	1	0	0	0	FM Jiwaka	Road
		Kosige 1	414	523	Minj HC	664	99	320	14.06.17	1	1	0	0	0	FM Jiwaka	Road
		Kola	317	292	Minj HC	312	79	150	14.06.17	1	1	0	0	0	FM Jiwaka	Road
		Pakna	118	116	Minj HC	137	30	66	21.06.17	1	1	0	0	0	FM Jiwaka	Road
		Jimbina 1	530	399	Minj HC	472	100	229	14.06.17	1	1	0	0	0	FM Jiwaka	Road
		Jimbina 2	455	546	Minj HC	628	131	306	14.06.17	1	1	0	0	0	FM Jiwaka	Road
		Konmil	159	231	Minj HC	115	29	57	14.06.17	1	1	0	0	0	FM Jiwaka	Road
		Anginmoi 2	230	286	Minj HC	288	43	141	14.06.17	1	1	0	0	0	FM Jiwaka	Road
		Kosige 2	412	389	Minj HC	448	83	212	14.06.17	1	1	0	0	0	FM Jiwaka	Road
19	Ngunba Tsents		3,518	4,157		3,696	814	1,835		11	11	0	0	0		
		Ngunba Tsents	213	382	Minj HC	354	76	185	18.06.17	1	1	0	0	0	FM Jiwaka	Road
		Andakapku	224	216	Minj HC	165	44	80	18.06.17	1	1	0	0	0	FM Jiwaka	Road
		Tomne	249	170	Minj HC	147	32	74	18.06.17	1	1	0	0	0	FM Jiwaka	Road
		Numkua	377	261	Minj HC	465	91	231	19.06.17	1	1	0	0	0	FM Jiwaka	Road
		Kupral	674	681	Minj HC	630	111	316	22.06.17	1	1	0	0	0	FM Jiwaka	Road
		Manjamb	534	415	Minj HC	242	59	119	17.06.17	1	1	0	0	0	FM Jiwaka	Road
		Okip	66	33	Minj HC	191	50	94	18.06.17	1	1	0	0	0	FM Jiwaka	Road
		Gun	434	650	Minj HC	548	121	269	16.06.17	1	1	0	0	0	FM Jiwaka	Road
		Gunwa	373	470	Minj HC	381	95	186	16.06.17	1	1	0	0	0	FM Jiwaka	Road
		Ngunmba	227	222	Minj HC	157	34	77	16.06.17	1	1	0	0	0	FM Jiwaka	Road
		Wara Waghi Plnt	147	656	Minj HC	416	101	204	16.06.17	1	1	0	0	0	FM Jiwaka	Road
20	Gabnal		2,974	1,694		1,499	356	741		8	8	0	0	0		
		Gabnal	677	186	Minj HC	203	39	101	20.06.17	1	1	0	0	0	FM Jiwaka	Road
		Kumblang 1	466	496	Minj HC	317	71	156	20.06.17	1	1	0	0	0	FM Jiwaka	Road
		Sikarap (1)	499	182	Minj HC	154	44	79	20.06.17	1	1	0	0	0	FM Jiwaka	Road
		Tup	205	97	Minj HC	153	40	75	20.06.17	1	1	0	0	0	FM Jiwaka	Road
		Sikarap (2)	320	157	Minj HC	182	50	90	20.06.17	1	1	0	0	0	FM Jiwaka	Road
		Kublang 2	527	237	Minj HC	156	39	76	20.06.17	1	1	0	0	0	FM Jiwaka	Road
		Korokaing	272	247	Minj HC	224	50	110	20.06.17	1	1	0	0	0	FM Jiwaka	Road
		John Bosco Community School	8	91	Minj HC	110	23	54	20.06.17	1	1	0	0	0	FM Jiwaka	Road

LLG	WARD	VILLAGE	Estimated 2017 Data Based On 2000 Census	Estimated 2017 Data Based On 2014 Data	Health Centre	Population Surveyed	House Holds Surveyed	Nets Issued	Date Of Distribution	Villages	Digicel	Bmobile	Citifon	Houses With Radios	Radio Networks	Comment
21	Alua		1,807	1,522		1,916	382	939		7	7	0	0	0		
		Alua	331	231	Minj HC	196	50	105	21.06.17	1	1	0	0	0	FM Jiwaka	Road
		Korkor	352	349	Minj HC	406	75	196	21.06.17	1	1	0	0	0	FM Jiwaka	Road
		Tumbang	139	130	Minj HC	254	50	122	23.06.17	1	1	0	0	0	FM Jiwaka	Road
		Dama	301	239	Minj HC	410	50	201	21.06.17	1	1	0	0	0	FM Jiwaka	Road
		Kupa	352	255	Minj HC	250	68	121	21.06.17	1	1	0	0	0	FM Jiwaka	Road
		Kuangware	107	201	Minj HC	229	48	109	21.06.17	1	1	0	0	0	FM Jiwaka	Road
		Kis Boarder	224	118	Minj HC	171	41	85	21.06.17	1	1	0	0	0	FM Jiwaka	Road
22	Gagwa		873	707		813	167	399		4	4	0	0	0		
		Gagwa	279	179	Minj HC	239	50	118	21.06.17	1	1	0	0	0	FM Jiwaka	Road
		Dup	163	174	Minj HC	133	29	65	23.06.17	1	1	0	0	0	FM Jiwaka	Road
		Elmar	251	188	Minj HC	251	50	122	21.06.17	1	1	0	0	0	FM Jiwaka	Road
		Kosamil	180	166	Minj HC	190	38	94	21.06.17	1	1	0	0	0	FM Jiwaka	Road
23	Mondomil		1,435	1,306		1,056	236	517		7	7	0	0	9		
		Kosanem	286	215	Minj HC	188	42	92	22.06.17	1	1	0	0	0	FM Jiwaka	Road
		Merep	186	157	Minj HC	160	34	78	22.06.17	1	1	0	0	0	FM Jiwaka	Road
		Magemb	81	138	Minj HC	63	13	31	22.06.17	1	1	0	0	0	FM Jiwaka	Road
		Kamang	361	260	Minj HC	203	35	99	25.06.17	1	1	0	0	9	FM Jiwaka	Road
		Minjmu	290	299	Minj HC	236	63	117	22.06.17	1	1	0	0	0	FM Jiwaka	Road
		Bukambang	158	134	Minj HC	113	30	54	22.06.17	1	1	0	0	0	FM Jiwaka	Road
		Mondomil C/S	73	102	Minj HC	93	19	46	22.06.17	1	1	0	0	0	FM Jiwaka	Road
24	Olubus		2,204	2,272		1,762	315	859		6	5	0	0	0		
		Olubus	420	402	Minj HC	202	39	100	22.06.17	1	1	0	0	0	FM Jiwaka	Road
		Pisngil	352	305	Minj HC					1						Included under Konjambi Konsar
		Konjambi Konsar	199	262	Minj HC	396	76	194	20.06.17	1	1	0	0	0	FM Jiwaka	Road
		Kumbuku	327	228	Minj HC	200	39	96	20.06.17	1	1	0	0	0	FM Jiwaka	Road
		Kola	516	519	Minj HC	535	90	262	20.06.17	1	1	0	0	0	FM Jiwaka	Road
		Waghi Block	390	555	Minj HC	429	71	207	21.06.17	1	1	0	0	0	FM Jiwaka	Road
25	Pukamil		2,387	2,128		1,818	340	867		8	8	8	0	0		
		Pukamil	303	234	Tsigmil HC	297	39	137	22.06.17	1	1	1	0		NBC	Road
		Kopung	702	550	Tsigmil HC	463	81	227	22.06.17	1	1	1	0		NBC	Road
		Mangi	283	244	Tsigmil HC	246	50	118	22.06.17	1	1	1	0		NBC	Road
		Wasne	199	259	Tsigmil HC	184	38	87	22.06.17	1	1	1	0		NBC	Road
		Timekuin	283	267	Tsigmil HC				22.06.17	1	1	1	0		NBC	included under Wasne
		Muruka Community School	9	254	Tsigmil HC	267	50	125	22.06.17	1	1	1	0		NBC	Road
		Kore Ware Block	197	119	Tsigmil HC	143	35	70	22.06.17	1	1	1	0		NBC	Road
		Kikwil Block	410	202	Tsigmil HC	218	47	103	22.06.17	1	1	1	0		NBC	Road
26	Tsigmil		4,552	3,564		4,182	800	1,998		18	17	17	0	9		
		Tsigmil	268	80	Tsigmil HC	150	37	74	21.06.17	1	1	1	0		NBC	Road
		Wamol	289	223	Tsigmil HC	230	50	104	21.06.17	1	1	1	0		NBC	Road
		Akomol	226	319	Tsigmil HC	389	75	191	21.06.17	1	1	1	0		NBC	Road
		Balne	140	189	Tsigmil HC	190	42	95	21.06.17	1	1	1	0		NBC	Road
		Kupisker	188	200	Tsigmil HC	194	41	94	21.06.17	1	1	1	0		NBC	Road
		Koropokap	90	271	Tsigmil HC	237	49	116	21.06.17	1	1	1	0		NBC	Road
		Daru	526	202	Tsigmil HC	208	50	103	21.06.17	1	1	1	0		NBC	Road
		Tuk	144	151	Tsigmil HC	270	48	130	21.06.17	1	1	1	0		NBC	Road
		Umna	428	217	Tsigmil HC	261	50	130	21.06.17	1	1	1	0		NBC	Road
		Kumneng	188	115	Tsigmil HC	220	47	108	21.06.17	1	1	1	0		NBC	Road
		Danal	444	260	Tsigmil HC	707	99	322	21.06.17	1	1	1	0		NBC	Road
		Dond (1)	366	281	Tsigmil HC				21.06.17	1						Included under Dong ward 27
		Bukil	360	224	Tsigmil HC	368	50	173	21.06.17	1	1	1	0	9	NBC	Road
		Waghi Block	163	217	Tsigmil HC	190	48	90	21.06.17	1	1	1	0		NBC	Road
		Kulangin	158	161	Tsigmil HC	241	47	112	21.06.17	1	1	1	0		NBC	Road
		Korpen	193	178	Tsigmil HC	169	36	81	21.06.17	1	1	1	0		NBC	Road
		Kolke	249	215	Tsigmil HC	39	8	19	21.06.17	1	1	1	0		NBC	Road
		Tsigmil Ebc Mission	134	61	Tsigmil HC	119	23	56	21.06.17	1	1	1	0		NBC	Road
27	Bekpe		1,140	1,831		3,211	517	1,564		7	7	7	0	136		
		Bekpe	120	256	Tsigmil HC	298	50	141	21.06.17	1	1	1	0	8	NBC	Road
		Gewi 1	276	284	Tsigmil HC	608	100	295	21.06.17	1	1	1	0	34	NBC	Road
		Gewi 2	316	176	Tsigmil HC	293	50	138	21.06.17	1	1	1	0	17	NBC	Road
		Dong	172	258	Tsigmil HC	293	58	140	21.06.17	1	1	1	0	9	NBC	Road
		Danal Community School	5	293	Tsigmil HC	253	59	159	21.06.17	1	1	1	0	7	NBC	Road
		Kumbal Block	69	280	Tsigmil HC	828	100	391	21.06.17	1	1	1	0	21	NBC	Road
		Waghi Bruk	182	285	Tsigmil HC	638	100	300	21.06.17	1	1	1	0	40	NBC	Road
28	Tumba		1,135	1,327		1,241	327	617		11	11	11	0	0		
		Tumba	213	150	Tsigmil HC	164	41	84	21.06.17	1	1	1	0		NBC	Road
		Tapia	153	38	Tsigmil HC	125	20	59	21.06.17	1	1	1	0		NBC	Road
		Wara Numants	131	176	Tsigmil HC	98	24	47	21.06.17	1	1	1	0		NBC	Road
		Anginbe	103	220	Tsigmil HC	273	81	139	21.06.17	1	1	1	0		NBC	Road
		KoPONONG	47	130	Tsigmil HC	127	44	64	21.06.17	1	1	1	0		NBC	Road
		Gokmil	62	185	Tsigmil HC	57	17	27	21.06.17	1	1	1	0		NBC	Road
		Millen	99	155	Tsigmil HC	204	49	104	21.06.17	1	1	1	0		NBC	Road
		Deibar	98	114	Tsigmil HC	92	22	43	21.06.17	1	1	1	0		NBC	Road
		Woi	104	85	Tsigmil HC	63	17	33	21.06.17	1	1	1	0		NBC	Road
		Ngumba	85	74	Tsigmil HC	31	10	14	21.06.17	1	1	1	0		NBC	Road
		Imba	39	0	Tsigmil HC	7	2	3	21.06.17	1	1	1	0		NBC	Road
29	Numgil		878	1,034		707	138	321		7	7	7	0	0		
		Numgil	96	160	Tsigmil HC	188	37	91	19.06.17	1	1	1	0		NBC	Road
		Balne	264	283	Tsigmil HC	165	30	77	19.06.17	1	1	1	0		NBC	Road
		Ok	145	280	Tsigmil HC	113	19	38	19.06.17	1	1	1	0		NBC	Road
		Kosba	107	27	Tsigmil HC	37	9	17	19.06.17	1	1	1	0		NBC	Road
		Keukil	136	98	Tsigmil HC	70	12	36	19.06.17	1	1	1	0		NBC	Road
		Kasgan	110	148	Tsigmil HC	111	22	51	19.06.17	1	1	1	0		NBC	Road

LLG	WARD	VILLAGE	Estimated 2017 Data Based On 2000 Census	Estimated 2017 Data Based On 2014 Data	Health Centre	Population Surveyed	House Holds Surveyed	Nets Issued	Date Of Distribution	Villages	Digicel	Emobile	Citifon	Houses With Radios	Radio Networks	Comment
		Numants Community School	19	38	Tsigmil HC	23	9	11	19.06.17	1	1	1	0		NBC	Road
30	Kugmar		1,272	1,254		2,205	263	1,021		8	8	8	0	0		
		Kugmar	115	233	Tsigmil HC	517	49	240	20.06.17	1	1	1	0		NBC	Road
		Bangam	568	180	Tsigmil HC	214	41	103	20.06.17	1	1	1	0		NBC	Road
		Tumwamol	276	225	Tsigmil HC	87	19	41	20.06.17	1	1	1	0		NBC	Road
		Wambi	158	151	Tsigmil HC	158	26	74	20.06.17	1	1	1	0		NBC	Road
		Dirbin	85	220	Tsigmil HC	284	40	129	20.06.17	1	1	1	0		NBC	Road
		Moiaba	54	222	Tsigmil HC	320	28	146	20.06.17	1	1	1	0		NBC	Road
		Kolinmaran	16	24	Tsigmil HC	104	22	49	20.06.17	1	1	1	0		NBC	Road
		Konsibal		NEW	Tsigmil HC	521	38	239	20.06.17	1	1	1	0		NBC	New Inclusion
31	Ngamar		1,476	1,545		2,764	380	1,292		6	6	6	0	0		
		Ngamar	87	280	Tsigmil HC	624	69	292	20.06.17	1	1	1	0		NBC	Road
		Kasbal	442	246	Tsigmil HC	439	80	209	20.06.17	1	1	1	0		NBC	Road
		Angin Monan	309	275	Tsigmil HC	337	68	158	20.06.17	1	1	1	0		NBC	Road
		Mangil	240	271	Tsigmil HC	421	75	202	20.06.17	1	1	1	0		NBC	Road
		Bokbake	254	231	Tsigmil HC	261	38	122	20.06.17	1	1	1	0		NBC	Road
		Djek 1	144	243	Tsigmil HC	682	50	309	20.06.17	1	1	1	0		NBC	Road
32	Djek		2,369	1,574		2,190	409	1,048		8	8	8	0	0		
		Djek 2	492	158	Tsigmil HC	509	92	248	20.06.17	1	1	1	0		NBC	Road
		Komaning	363	247	Tsigmil HC	472	100	225	20.06.17	1	1	1	0		NBC	Road
		Goke 1	183	273	Tsigmil HC	483	95	230	20.06.17	1	1	1	0		NBC	Road
		Tauki	268	220	Tsigmil HC	191	39	94	20.06.17	1	1	1	0		NBC	Road
		Omong	172	168	Tsigmil HC	95	20	44	20.06.17	1	1	1	0		NBC	Road
		Tukme	260	111	Tsigmil HC	91	20	44	20.06.17	1	1	1	0		NBC	Road
		Garmangnok	251	210	Tsigmil HC	239	26	111	20.06.17	1	1	1	0		NBC	Road
		Goke 2	379	186	Tsigmil HC	110	17	52	20.06.17	1	1	1	0		NBC	Road
33	Yeu 1		193	202		169	36	122		2	2	0	0	0		
		Dapdami	55	0	Mt. Au HC	67	16	51	31.05.17	1	1	0	0	0		Non-existent
		Kurumuk	137	202	Mt. Au HC	102	20	71	31.05.17	1	1	0	0	0		Plane/Trek
34	Mt. Au		369	458		337	74	225		3	0	0	0	0		
		Mt Au	153	213	Mt. Au HC	80	14	55	31.05.17	1	0	0	0	0		Plane/Trek
		Elwil	159	143	Mt. Au HC	140	32	90	31.05.17	1	0	0	0	0		Plane/Trek
		Mt Au Station	57	102	Mt. Au HC	117	28	80	31.05.17	1	0	0	0	0		Plane/Trek
35	Ambopane		163	154		112	26	37		1	1	0	0	0		
		Ambopane	163	154	Mt. Au HC	112	26	37	30.05.17	1	1	0	0	0		30 km trek from Mt. Au
36	Yeu 2		308	352		257	52	170		2	1	0	0	0		
		Sikoi	145	129	Mt. Au HC	152	29	90	31.05.17	1	1	0	0	0		8 km trek from Mt. Au
		New Camp	163	223	Mt. Au HC	105	23	80	31.05.17	1	0	0	0	0		6 km trek from Mt. Au
37	Olate		407	0		77	18	23		1	0	0	0	0		
		Olate	407	0	Mt. Au HC	77	18	23	31.05.17	1	0	0	0	0		Non-existent
38	Plati		117	35		145	29	50		1	0	0	0	0		
		Palti	117	35	Mt. Au HC	145	29	50	01.06.17	1	0	0	0	0		15 km trek from Mt. Au
39	Tesa		137	113		130	28	46		1	0	0	0	0		
		Tesa	137	113	Mt. Au HC	130	28	46	01.06.17	1	0	0	0	0		21 km trek from Mt. Au
40	Wusinge		35	138		144	35	44		1	0	0	0	0		
		Wusinge	35	138	Mt. Au HC	144	35	44	01.06.17	1	0	0	0	0		23 km trek from Mt. Au
41	Meru		470	432		510	94	200		3	0	0	0	0		
		Meru	189	106	Mt. Au HC	133	29	50	02.06.17	1	0	0	0	0		8 km trek from Mt. Au
		Mamne Tsents	129	195	Mt. Au HC	202	31	91	02.06.17	1	0	0	0	0		
		Kumbang	152	131	Mt. Au HC	175	34	59	02.06.17	1	0	0	0	0		5 km trek from Mt. Au
42	Tandambak		497	231		307	67	186		2	0	0	0	0		
		Tandambak	352	231	Mt. Au HC	126	27	86	31.06.17	1	0	0	0	0		Plane/Trek
		Au	145	0	Mt. Au HC	181	40	100	01.06.17	1	0	0	0	0		Covers under Tandambak Ward 42
43	Minj Urban		1,247	1,636		776	122	392		3	3	0	0	0		
		Police Residential	448	852	Minj HC	268	47	137	16.06.17	1	1	0	0	0	FM Jiwaka	Road
		Minj Community School	401	370	Minj HC	183	25	96	16.06.17	1	1	0	0	0	FM Jiwaka	Road
		Commercial/High School	398	413	Minj HC	325	50	159	16.06.17	1	1	0	0	0	FM Jiwaka	Road

ANNEX THREE

**JIWAKA PROVINCE
NORTH WAGHI POPULATION 2017
LLIN DISTRIBUTION SUMMARY SHEET**

LLG	WARD	VILLAGE	Estimated 2017 Data Based On 2000 Census	Estimated 2017 Data Based On 2014 Data	Health Centre	Population Surveyed	House Holds Surveyed	Nets Issued	Date Of Distribution	Villages	Digicel	Bmobile	Citifon	Houses With Radios	Radio Networks	Comment
NORTH WAGHI			100,937	100,937		99,487	17,914	48,753			276	260	195	0	8,737	262
NORTH WAGHI RURAL			100,937	100,937		99,487	17,914	48,753			276	260	195	0	8,737	262
1	Kimil 1		6,561	5,241		5,792	1,114	2,849			14	14	14	0	1,164	
		Kolmanga	234	298	Kimil HC	361	50	134	19.06.17	1	1	1	0	50	NBC WHP	Road
		Randa	713	471	Kimil HC	454	95	247	29.06.17	1	1	1	0	95	NBC WHP	Road
		Mur	152	262	Kimil HC	233	50	104	29.06.17	1	1	1	0	50	NBC WHP	Road
		Paka	127	240	Kimil HC	330	50	135	29.06.17	1	1	1	0	50	NBC WHP	Road
		Gelgang	119	254	Kimil HC	307	50	145	29.06.17	1	1	1	0	50	NBC WHP	Road
		Kuman	356	216	Kimil HC	242	50	125	29.06.17	1	1	1	0	50	NBC WHP	Road
		Kulpi	218	263	Kimil HC	232	50	126	29.06.17	1	1	1	0	50	NBC WHP	Road
		Auri	317	433	Kimil HC	449	100	223	29.06.17	1	1	1	0	100	NBC WHP	Road
		Kowi Saw Mill	753	961	Kimil HC	787	200	430	29.06.17	1	1	1	0	200	NBC WHP	Road
		Kimil Plnt	107	220	Kimil HC	293	50	142	29.06.17	1	1	1	0	200	NBC WHP	Road
		Ok Plantation	1,223	731	Kimil HC	647	119	323	29.06.17	1	1	1	0	69	NBC WHP	Road
		Koban Plt Div.2	1,345	405	Kimil HC	557	100	286	29.06.17	1	1	1	0	100	NBC WHP	Road
		Koban Plnt Div. 3	898	486	Kimil HC	592	100	282	30.06.17	1	1	1	0	50	NBC WHP	Road
		Koskala		NEW	Kimil HC	308	50	147	29.06.17	1	1	1	0	50	NBC WHP	Road
2	Kimil 2		2,216	2,626		2,555	667	1,342			8	8	8	0	617	
		Kalpang Lutheran	662	698	Kimil HC	578	150	318	29.06.17	1	1	1	0	150	NBC WHP	Road
		Olmpg Gupalm	239	533	Kimil HC	210	82	123	29.06.17	1	1	1	0	82	NBC WHP	Road
		Gulka	337	259	Kimil HC	445	100	198	29.06.17	1	1	1	0	100	NBC WHP	Road
		Angri	263	196	Kimil HC	191	49	116	29.06.17	1	1	1	0	49	NBC WHP	Road
		New Kem	245	401	Kimil HC	291	100	159	29.06.17	1	1	1	0	100	NBC WHP	Road
		Gupnimp	206	0	Kimil HC	236	50	115	29.06.17	1	1	1	0	50	NBC WHP	Road
		Oldo	90	138	Kimil HC	157	45	86	29.06.17	1	1	1	0	45	NBC WHP	Road
		Bundi Block	173	401	Kimil HC	447	91	227	29.06.17	1	1	1	0	41	NBC WHP	Road
3	Bunumwo		9,844	10,076		9,916	1,938	4,867			27	23	23	0	2,033	
		Kalanga Kunda	222	169	Kimil HC	219	50	115	29.06.17	1	1	1	0	42	NBC WHP	Road
		Kalanga 1	341	299	Kimil HC	194	42	94	29.06.17	1	1	1	0	42	NBC WHP	Road
		Kalanga 2	506	320	Kimil HC	415	87	206	28.06.17	1	1	1	0	87	NBC WHP	Road
		Goulie	265	396	Kimil HC	221	50	110	28.06.17	1	1	1	0	50	NBC WHP	Road
		Wabag/Tari Block	687	254	Kimil HC	458	100	236	28.06.17	1	1	1	0	100	NBC WHP	Road
		Kilip Goi	189	240	Kimil HC					1					NBC WHP	Included under Wabag/Tari blk
		Kupnung	167	196	Kimil HC	195	50	108	28.06.17	1	1	1	0	50	NBC WHP	Road
		Mungal	243	275	Kimil HC	214	50	111	28.06.17	1	1	1	0	50	NBC WHP	Road
		Numanz	477	450	Kimil HC	407	100	217	28.06.17	1	1	1	0	100	NBC WHP	Road
		Bung	335	202	Kimil HC	548	125	266	29.06.17	1	1	1	0	125	NBC WHP	Road
		Moimb	491	534	Kimil HC	434	100	222	29.06.17	1	1	1	0	100	NBC WHP	Road
		Bunumwo 2	339	286	Kimil HC	270	50	127	28.06.17	1	1	1	0	50	NBC WHP	Road
		Bunumwo 1	212	339	Kimil HC	247	50	118	28.06.17	1	1	1	0	50	NBC WHP	Road
		Bunumwo Market	257	307	Kimil HC					1						Included under Sigr Mountain
		Sigr Mountain	929	306	Kimil HC	633	100	299	28.06.17	1	1	1	0	100	NBC WHP	Road
		Sigr Wanne	325	525	Kimil HC	681	100	319	29.06.17	1	1	1	0	100	NBC WHP	Road
		Kupkap	129	221	Kimil HC	310	50	151	28.06.17	1	1	1	0	68	NBC WHP	Road
		Sigr Daunbilo	625	606	Kimil HC	549	100	268	28.06.17	1	1	1	0	68	NBC WHP	Road
		Wara Ane	208	260	Kimil HC	328	68	152	28.06.17	1	1	1	0	68	NBC WHP	Road
		Kalanga Plnt/Kp Lodge	419	390	Kimil HC					1						Included under Bunumwo Plnt
		Bunumwo Plnt	818	1,460	Kimil HC	1,661	300	796	28.06.17	1	1	1	0	300	NBC WHP	Road
		Sigr Community School	27	292	Kimil HC	158	33	88	28.06.17	1	1	1	0	150	NBC WHP	Road
		Citc	868	786	Kimil HC	771	150	370	28.06.17	1	1	1	0	150	NBC WHP	Road
		Waghi Mek Plnt(Sigr)	154	511	Kimil HC					1						Included under Momgie/Waghi Valley sec school
		Wr Carpenters Plnt (Sigr)	611	451	Kimil HC	624	100	308	29.06.17	1	1	1	0	100	NBC WHP	Road
		Waghi Valley Sec School		NEW	Kimil HC	185	33	88	28.06.17	1	1	1	0	33	NBC WHP	Road
		Mongie		NEW	Kimil HC	194	50	98	28.06.17	1	1	1	0	50	NBC WHP	Road
4	Koskala 2		2,868	4,210		2,256	539	1,088			7	7	7	0	121	
		Koskala No.2	709	1,049	Fatima HC	660	167	319	20.06.17	1	1	1	0	9	NBC Jiwaka	Road
		Goldop	308	759	Fatima HC	296	64	138	20.06.17	1	1	1	0	30	NBC Jiwaka	Road
		Goldop Ombuna	232	470	Fatima HC	164	49	88	20.06.17	1	1	1	0	0	NBC Jiwaka	Road
		Kala	495	483	Fatima HC	347	100	171	20.06.17	1	1	1	0	43	NBC Jiwaka	Road
		Bulunz	352	821	Fatima HC	287	51	134	20.06.17	1	1	1	0	2	NBC Jiwaka	Road
		Balis	236	349	Fatima HC	235	58	112	20.06.17	1	1	1	0	13	NBC Jiwaka	Road
		Karkopi Plnt	537	280	Fatima HC	267	50	126	20.06.17	1	1	1	0	24	NBC Jiwaka	Road
5	Koskala 1		3,820	4,516		4,146	834	1,974			16	16	16	0	167	
		Kombulno	403	332	Fatima HC	403	99	197	20.06.17	1	1	1	0	16	NBC Jiwaka	Road
		Kupnung	323	305	Fatima HC	219	50	107	20.06.17	1	1	1	0	5	NBC Jiwaka	Road
		Top Klab	123	185	Fatima HC	252	49	116	20.06.17	1	1	1	0	1	NBC Jiwaka	Road
		Murkumb	160	174	Fatima HC	201	39	96	20.06.17	1	1	1	0	31	NBC Jiwaka	Road
		Kaplong	298	315	Fatima HC	165	44	81	20.06.17	1	1	1	0	6	NBC Jiwaka	Road
		Kumuk	214	584	Fatima HC	211	50	102	20.06.17	1	1	1	0	4	NBC Jiwaka	Road
		Karawagl	804	817	Fatima HC	800	161	371	20.06.17	1	1	1	0	29	NBC Jiwaka	Road
		Bunumol	271	243	Fatima HC	245	49	113	20.06.17	1	1	1	0	2	NBC Jiwaka	Road
		Koskamol	210	134	Fatima HC	191	36	92	20.06.17	1	1	1	0	28	NBC Jiwaka	Road
		Fatima V/ Centre	74	355	Fatima HC	104	20	49	20.06.17	1	1	1	0	12	NBC Jiwaka	Road
		Fatima Plnt	372	235	Fatima HC	236	41	114	20.06.17	1	1	1	0	2	NBC Jiwaka	Road
		Waghi Mek Plnt	222	263	Fatima HC	226	34	106	20.06.17	1	1	1	0	12	NBC Jiwaka	Road
		Fatima Cath. Mission	92	180	Fatima HC	156	29	79	20.06.17	1	1	1	0	8	NBC Jiwaka	Road
		Fatima Secondary	41	284	Fatima HC	294	48	135	20.06.17	1	1	1	0	4	NBC Jiwaka	Road

LLG	WARD	VILLAGE	Estimated 2017 Data Based On 2000 Census	Estimated 2017 Data Based On 2014 Data	Health Centre	Population Surveyed	House Holds Surveyed	Nets Issued	Date Of Distribution	Villages	Digicel	Bmobile	Citifon	Houses With Radios	Radio Networks	Comment
		Good Sherperd Coll	214	110	Fatima HC	68	16	36	20.06.17	1	1	1	0	2	NBC Jiwaka	Road
		Warakar		NEW	Fatima HC	375	69	180	20.06.17	1	1	1	0	5	NBC Jiwaka	Road
6	Kakinjep		6,028	7,173		6,572	1,184	3,166		17	15	15	0	100		
		Kakinjep	588	695	Banz2 HC					1						Included in Block 1 & 2
		Kisiwana	337	479	Banz2 HC	342	83	164	16.06.17	1	1	1	0	4	NBC Jiwaka	Road
		Angnimp	569	523	Banz2 HC	564	83	272	17.06.17	1	1	1	0	0	NBC Jiwaka	Road
		Juboko	247	507	Banz2 HC	423	74	195	17.06.17	1	1	1	0	0	NBC Jiwaka	Road
		Block Wan	524	715	Banz2 HC	643	147	308	16.06.17	1	1	1	0	11	NBC Jiwaka	Road
		Daltapia	261	254	Banz2 HC	345	63	163	17.06.17	1	1	1	0	5	NBC Jiwaka	Road
		Dalwa	374	537	Banz2 HC	606	97	289	17.06.17	1	1	1	0	0	NBC Jiwaka	Road
		Baming Polong	202	248	Banz2 HC	256	63	131	17.06.17	1	1	1	0	0	NBC Jiwaka	Road
		Band	380	202	Banz2 HC	140	20	70	17.06.17	1	1	1	0	5	NBC Jiwaka	Road
		Wana	382	309	Banz2 HC	658	79	321	17.06.17	1	1	1	0	0	NBC Jiwaka	Road
		Waghi Valley Kumuka	477	544	Banz2 HC	504	100	250	16.06.17	1	1	1	0	0	NBC Jiwaka	Road
		Block Two	666	440	Banz2 HC	751	134	361	16.06.17	1	1	1	0	68	NBC Jiwaka	Road
		Olmants	152	320	Banz2 HC	455	100	224	16.06.17	1	1	1	0	4	NBC Jiwaka	Road
		Kilip Kaipela	360	443	Banz2 HC	469	59	220	19.06.17	1	1	1	0	0	NBC Jiwaka	Road
		Waghi Mek Plnt	201	483	Banz2 HC	196	39	95	17.06.17	1	1	1	0	3	NBC Jiwaka	Road
		Kopor Plnt	117	231	Banz2 HC	220	43	103	17.06.17	1	1	1	0	0	NBC Jiwaka	Road
		Aba Plnt	193	244	Banz2 HC					1						Covered under Kudjip Wd26
7	Molka		6,040	5,098		5,013	904	2,342		12	11	11	0	268		
		Molka	245	202	Banzwan HC	499	99	237	20.06.17	1	1	1	0	0	NBC Jiwaka	Road
		Pak	438	282	Banzwan HC	395	97	182	20.06.17	1	1	1	0	0	NBC Jiwaka	Road
		Kambim	440	379	Banzwan HC	282	65	130	19.06.17	1	1	1	0	0	NBC Jiwaka	Road
		Jelina	284	264	Banzwan HC	136	20	63	21.06.17	1	1	1	0	7	NBC Jiwaka	Road
		Golmol	354	174	Banzwan HC	165	26	75	21.06.17	1	1	1	0	6	NBC Jiwaka	Road
		Kana	292	263	Banzwan HC	290	50	141	19.06.17	1	1	1	0	11	NBC Jiwaka	Road
		Kolimba	142	174	Banzwan HC					1						Same as Kip Koimba Wd 11
		Eltimb	878	741	Banzwan HC	750	126	360	19.06.17	1	1	1	0	0	NBC Jiwaka	Road
		Sipil	1,415	1,065	Banzwan HC	797	145	377	19.06.17	1	1	1	0	41	NBC Jiwaka	Road
		Munump	1,022	875	Banzwan HC	578	76	262	19.06.17	1	1	1	0	51	NBC Jiwaka	Road
		Dom Block	275	342	Banzwan HC	680	100	312	19.06.17	1	1	1	0	99	NBC Jiwaka	Road
		Ombuld	253	335	Banzwan HC	441	100	203	19.06.17	1	1	1	0	53	NBC Jiwaka	Road
8	Kwiona.1		1,497	1,192		1,135	233	545		7	7	7	0	49		
		Kwiona 1	160	144	Banzwan HC	76	21	39	18.06.17	1	1	1	0	0	NBC Jiwaka	Road
		Kusnguna (Laswari)	103	190	Banzwan HC	190	36	91	18.06.17	1	1	1	0	5	NBC Jiwaka	Road
		Amik	236	165	Banzwan HC	359	74	171	18.06.17	1	1	1	0	19	NBC Jiwaka	Road
		Kaunang	177	90	Banzwan HC	109	19	53	18.06.17	1	1	1	0	0	NBC Jiwaka	Road
		Kurrap	138	95	Banzwan HC	87	19	41	18.06.17	1	1	1	0	13	NBC Jiwaka	Road
		Aprup 1	259	245	Banzwan HC	93	14	44	18.06.17	1	1	1	0	5	NBC Jiwaka	Road
		Kopnga	424	263	Banzwan HC	221	50	106	18.06.17	1	1	1	0	7	NBC Jiwaka	Road
9	Kwiona.2		1,211	1,071		1,728	309	820		6	6	6	0	34		
		Gera	202	114	Banzwan HC	168	30	78	18.06.17	1	1	1	0	9	NBC Jiwaka	Road
		Dongil	125	133	Banzwan HC	431	49	202	18.06.17	1	1	1	0	16	NBC Jiwaka	Road
		Aukbea	156	166	Banzwan HC	224	50	111	18.06.17	1	1	1	0	0	NBC Jiwaka	Road
		Aprip	97	91	Banzwan HC	239	50	117	18.06.17	1	1	1	0	0	NBC Jiwaka	Road
		Banzamil	234	213	Banzwan HC	291	50	135	18.06.17	1	1	1	0	6	NBC Jiwaka	Road
		Warala	397	354	Banzwan HC	375	80	177	18.06.17	1	1	1	0	3	NBC Jiwaka	Road
10	Dumbola		4,190	4,569		4,600	768	2,196		17	15	15	0	56		
		Dumbola	329	284	Banzwan HC	587	88	281	20.06.17	1	1	1	0	1	NBC Jiwaka	Road
		Ka-Ombuna	189	246	Banzwan HC	232	50	113	20.06.17	1	1	1	0	4	NBC Jiwaka	Road
		Noltupa	206	163	Banzwan HC	297	41	136	20.06.17	1	1	1	0	1	NBC Jiwaka	Road
		Gugu Kondol	290	259	Banzwan HC	342	39	165	20.06.17	1	1	1	0	3	NBC Jiwaka	Road
		Nukem Ombuntape	265	300	Banzwan HC	325	50	152	20.06.17	1	1	1	0	2	NBC Jiwaka	Road
		Kulamb	364	286	Banzwan HC	272	47	130	20.06.17	1	1	1	0	1	NBC Jiwaka	Road
		Kongambil	253	408	Banzwan HC	381	69	186	20.06.17	1	1	1	0	6	NBC Jiwaka	Road
		Ausol-Kalawol	448	495	Banzwan HC	447	85	218	20.06.17	1	1	1	0	4	NBC Jiwaka	Road
		Kuimara	175	269	Banzwan HC	213	39	106	20.06.17	1	1	1	0	7	NBC Jiwaka	Road
		Singinda	208	235	Banzwan HC	204	49	99	20.06.17	1	1	1	0	2	NBC Jiwaka	Road
		Gurnel	113	225	Banzwan HC	411	35	187	20.06.17	1	1	1	0	1	NBC Jiwaka	Road
		Ararim	255	233	Banzwan HC					1						Included under Gurnel
		Kanipas	101	231	Banzwan HC	391	78	186	20.06.17	1	1	1	0		NBC Jiwaka	Road
		Ambine	430	214	Banzwan HC					1					NBC Jiwaka	Included under Kanipas
		Wamol	115	222	Banzwan HC	162	30	77	20.06.17	1	1	1	0	5	NBC Jiwaka	Road
		Lutheran College	202	191	Banzwan HC	118	23	56	20.06.17	1	1	1	0	10	NBC Jiwaka	Road
		Lutheran Mission	245	308	Banzwan HC	218	45	104	20.06.17	1	1	1	0	9	NBC Jiwaka	Road
11	Talu		6,413	5,051		5,023	947	2,470		14	13	13	0	215		
		Talu 1	1,193	789	Banzwan HC	592	130	301	15.06.17	1	1	1	0	48	NBC Jiwaka	Road
		Kurmul	276	142	Banzwan HC	225	50	110	15.06.17	1	1	1	0	40	NBC Jiwaka	Road
		Malu	448	256	Banzwan HC	171	36	89	15.06.17	1	1	1	0	27	NBC Jiwaka	Road
		Bints	861	433	Banzwan HC	656	120	319	15.06.17	1	1	1	0	38	NBC Jiwaka	Road
		Kip Koimba	660	495	Banzwan HC	950	132	464	15.06.17	1	1	1	0	16	NBC Jiwaka	Road
		Madang	629	441	Banzwan HC	326	77	164	15.06.17	1	1	1	0	0	NBC Jiwaka	Road
		Talu 2	333	392	Banzwan HC	442	100	214	15.06.17	1	1	1	0	0	NBC Jiwaka	Road
		Gurnell	226	270	Banzwan HC					1						Same village in ward 10
		Watalii Blok	349	448	Banzwan HC	191	28	93	15.06.17	1	1	1	0	5	NBC Jiwaka	Road
		Kandal Blok	502	271	Banzwan HC	247	63	120	15.06.17	1	1	1	0	22	NBC Jiwaka	Road
		Nombon Guralpe	372	228	Banzwan HC	459	48	219	15.06.17	1	1	1	0	0	NBC Jiwaka	Road
		Waghi Mek Plnt (Factory)	275	251	Banzwan HC	261	50	127	15.06.17	1	1	1	0	0	NBC Jiwaka	Road
		Karmal Plantation	160	339	Banzwan HC	187	50	97	15.06.17	1	1	1	0	0	NBC Jiwaka	Road
		Mintal Plantation	130	295	Banzwan HC	316	63	153	15.06.17	1	1	1	0	19	NBC Jiwaka	Road
12	Kendu		6,513	5,737		6,355	1,132	3,071		19	19	19	0	75		
		Kendu	399	240	Banzwan HC	494	79	218	16.06.17	1	1	1	0	16	NBC Jiwaka	Road
		Binsku	181	235	Banzwan HC	297										

LLG	WARD	VILLAGE	Estimated 2017 Data Based On 2000 Census	Estimated 2017 Data Based On 2014 Data	Health Centre	Population Surveyed	House Holds Surveyed	Nets Issued	Date Of Distribution	Villages	Digicel	Bmobile	Citifon	Houses With Radios	Radio Networks	Comment
		Kendu Baiman	352	377	Banzwan HC	445	72	217	16.06.17	1	1	1	0	7	NBC Jiwaka	Road
		Kosuwa	181	275	Banzwan HC	422	79	206	16.06.17	1	1	1	0	4	NBC Jiwaka	Road
		Kisap	241	252	Banzwan HC	254	49	118	16.06.17	1	1	1	0	3	NBC Jiwaka	Road
		Bilu	574	483	Banzwan HC	593	100	281	16.06.17	1	1	1	0	8	NBC Jiwaka	Road
		Tola	384	339	Banzwan HC	328	60	158	16.06.17	1	1	1	0	3	NBC Jiwaka	Road
		Karmal	387	251	Banzwan HC	154	36	83	16.06.17	1	1	1	0	1	NBC Jiwaka	Road
		Waghi Block	269	354	Banzwan HC	132	24	63	16.06.17	1	1	1	0	2	NBC Jiwaka	Road
		Kerowil	349	248	Banzwan HC	267	47	130	16.06.17	1	1	1	0	1	NBC Jiwaka	Road
		Bariya	450	409	Banzwan HC	470	100	229	16.06.17	1	1	1	0	3	NBC Jiwaka	Road
		Nangamb	463	493	Banzwan HC	409	72	192	16.06.17	1	1	1	0	3	NBC Jiwaka	Road
		Gusamp	368	254	Banzwan HC	268	50	131	16.06.17	1	1	1	0	5	NBC Jiwaka	Road
		Kasgana	300	290	Banzwan HC	303	56	145	16.06.17	1	1	1	0	7	NBC Jiwaka	Road
		Yapa	469	227	Banzwan HC	192	40	94	16.06.17	1	1	1	0	1	NBC Jiwaka	Road
		Ambang Community School	12	0	Banzwan HC	425	50	208	16.06.17	1	1	1	0	1		Included in Ambang/Road
		Kisap Community School	33	93	Banzwan HC	96	18	47	16.06.17	1	1	1	0	3	NBC Jiwaka	Road
13	Bolimba		2,942	3,325		2,938	486	1405		9	8	0	0	331		
		Bolimba	403	546	Nondugl HC	546	94	262	03.07.17	1	1	0	0	68	FM Jiwaka	Road
		Polongmur	475	652	Nondugl HC	554	95	264	03.07.17	1	1	0	0	90	FM Jiwaka	Road
		Dalbal	512	446	Nondugl HC	671	100	321	03.07.17	1	1	0	0	63	FM Jiwaka	Road
		Tapia	306	282	Nondugl HC	362	50	173	03.07.17	1	1	0	0	38	FM Jiwaka	Road
		Wana	275	270	Nondugl HC	285	47	137	03.07.17	1	1	0	0	15	FM Jiwaka	Road
		Bomol	271	240	Nondugl HC	230	33	108	03.07.17	1	1	0	0	5	FM Jiwaka	Road
		Donu	187	282	Nondugl HC					1						Covered under Dona HC
		Kalmang	508	606	Nondugl HC	197	42	95	03.07.17	1	1	0	0	35	FM Jiwaka	Road
		Kalmang Plnt	6	0	Nondugl HC	93	25	45	03.07.17	1	1	0	0	17	FM Jiwaka	Road
14	Numbkora		2,278	1,607		1,448	297	783		5	5	5	0	38		
		Numbkora	602	382	Norba HC	634	120	337	26.06.17	1	1	1	0	6	FM,AM	Road
		Malamb	243	237	Norba HC	191	45	101	26.06.17	1	1	1	0	0	FM,AM	Road
		Nende	312	476	Norba HC	279	55	153	26.06.17	1	1	1	0	32	FM,AM	Road
		Nounang	535	152	Norba HC	128	27	67	26.06.17	1	1	1	0	0	FM,AM	Road
		Kumbal	586	360	Norba HC	216	50	125	26.06.17	1	1	1	0	0	FM,AM	Road
15	Milep 1		2,223	2,008		2,373	389	1,258		7	7	7	0	210		
		Kala (Milep 1)	580	601	Norba HC	749	109	392	28.06.17	1	1	1	0	54	FM,AM	Road
		Malbanga	288	250	Norba HC	389	47	211	28.06.17	1	1	1	0	47	FM,AM	Road
		Kapolong	426	350	Norba HC	183	47	109	28.06.17	1	1	1	0	46	FM,AM	Road
		Dire	345	315	Norba HC	234	47	127	28.06.17	1	1	1	0	26	FM,AM	Road
		Norba 1	526	285	Norba HC	252	44	133	28.06.17	1	1	1	0	21	FM,AM	Road
		Milep Comm/School	23	134	Norba HC	253	45	129	28.06.17	1	1	1	0	10	FM,AM	Road
		Norba S/Health Centre	35	73	Norba HC	313	50	157	28.06.17	1	1	1	0	6	FM,AM	Road
16	Milep 2		1,495	2,158		1,536	268	854		3	2	2	0	25		
		Norba 2	276	236	Norba HC					1						Included under Tolpa 2
		Olo	652	758	Norba HC	595	114	370	26.06.17	1	1	1	0	0	FM,AM	Road
		Tolpa	567	1,164	Norba HC	941	154	484	26.06.17	1	1	1	0	25	FM,AM	Road
17	Onil		1,645	1,510		1,366	242	746		7	6	6	0	63		
		Dalkan Kwiona	271	394	Norba HC	280	58	155	27.06.17	1	1	1	0	8	FM,AM	Road
		Waplekan Kumora	201	138	Norba HC	123	15	67	27.06.17	1	1	1	0	0	FM,AM	Road
		Koploka Nonge Emil	241	207	Norba HC	263	41	142	27.06.17	1	1	1	0	41	FM,AM	Road
		Koploka Ju Dai	156	244	Norba HC	134	21	69	27.06.17	1	1	1	0	12	FM,AM	Road
		Konskan Nol Egel	267	170	Norba HC					1						Included underTepngakan Tapia
		Tepngakan Tapia	150	83	Norba HC	177	40	104	27.06.17	1	1	1	0	1	FM,AM	Road
		Kuntka Ombuna	360	274	Norba HC	389	67	209	27.06.17	1	1	1	0	1	FM,AM	Road
18	Kaming		2,146	2,131		1,841	334	988		7	7	7	0	72		
		Sewula	438	394	Norba HC	404	72	221	28.06.17	1	1	1	0	4	FM,AM	Road
		Polonga	183	247	Norba HC	253	46	132	28.06.17	1	1	1	0	0	FM,AM	Road
		Koskala	273	275	Norba HC	230	48	120	28.06.17	1	1	1	0	34	FM,AM	Road
		Korop Mii	473	233	Norba HC	242	50	126	28.06.17	1	1	1	0	12	FM,AM	Road
		Nolombo	323	250	Norba HC	296	42	149	28.06.17	1	1	1	0	1	FM,AM	Road
		Mundu	442	350	Norba HC	267	48	153	28.06.17	1	1	1	0	3	FM,AM	Road
		Kaming Comm/School	14	381	Norba HC	149	28	87	22.06.17	1	1	1	0	18	FM,AM	Road
19	Munumul		6,785	6,070		5,992	1,015	2861		11	10	0	0	733		
		Munumul	458	702	Nondugl HC	869	140	413	27.06.17	1	1	0	0	20	FM Jiwaka	Road
		Ombundapi	607	516	Nondugl HC	377	61	183	27.06.17	1	1	0	0	61	FM Jiwaka	Road
		Kurumba	403	448	Nondugl HC	340	52	166	27.06.17	1	1	0	0	31	FM Jiwaka	Road
		Kondowil	1,641	1,379	Nondugl HC	1,361	245	647	27.06.17	1	1	0	0	200	FM Jiwaka	Road
		Kumbal Kokonat	849	685	Nondugl HC	861	143	411	30.06.17	1	1	0	0	103	FM Jiwaka	Road
		Kalke	438	406	Nondugl HC	400	69	191	02.07.17	1	1	0	0	69	FM Jiwaka	Road
		Nondubal	199	238	Nondugl HC	357	50	171	27.06.17	1	1	0	0	41	FM Jiwaka	Road
		Golump	559	439	Nondugl HC	320	70	152	27.06.17	1	1	0	0	40	FM Jiwaka	Road
		Kupand	158	51	Nondugl HC					1						In South Waghi ward 17
		Guspa	1,452	1,105	Nondugl HC	1,027	171	489	29.06.17	1	1	0	0	154	FM Jiwaka	Road
		Ombuntapi Com/School	21	101	Nondugl HC	80	14	38	27.06.17	1	1	0	0	14	FM Jiwaka	Road
20	Nondugl		2,934	1,624		1,709	249	818		3	3	0	0	147		
		Wana	1,657	546	Nondugl HC	716	100	344	27.06.17	1	1	0	0	18	FM Jiwaka	Road
		Nolkunung	602	537	Nondugl HC	662	118	316	28.06.17	1	1	0	0	72	FM Jiwaka	Road
		Koskan	676	541	Nondugl HC	331	31	158	28.06.17	1	1	0	0	57	FM Jiwaka	Road
21	Bamna		2,907	2,715		3,145	469	1491		7	7	0	0	367		
		Bamna	216	298	Nondugl HC	310	50	145	27.06.17	1	1	0	0	26	FM Jiwaka	Road
		Gun	666	343	Nondugl HC	632	100	294	27.06.17	1	1	0	0	59	FM Jiwaka	Road
		Gergan	496	247	Nondugl HC	387	48	185	28.06.17	1	1	0	0	37	FM Jiwaka	Road
		Dalnamp	802	575	Nondugl HC	608	73	291	28.06.17	1	1	0	0	67	FM Jiwaka	Road
		Nongol Tri	551	526	Nondugl HC	481	77	229	27.06.17	1	1	0	0	58	FM Jiwaka	Road
		Nondugl Wa	74	256	Nondugl HC	349	45	167	28.06.17	1	1	0	0	44	FM Jiwaka	Road
		Nondugl Plnt	101	471	Nondugl HC	378	76</									

LLG	WARD	VILLAGE	Estimated 2017 Data Based On 2000 Census	Estimated 2017 Data Based On 2014 Data	Health Centre	Population Surveyed	House Holds Surveyed	Nets Issued	Date Of Distribution	Villages	Digicel	Bmobile	Citifon	Houses With Radios	Radio Networks	Comment
		Parmel	668	420	Nondugl HC	468	72	224	27.06.17	1	1	0	0	33	FM Jiwaka	Road
		Maninge	588	434	Nondugl HC	424	94	204	28.06.17	1	1	0	0	39	FM Jiwaka	Road
		Konmal	676	569	Nondugl HC	506	86	240	28.06.17	1	1	0	0	86	FM Jiwaka	Road
		Manne	370	587	Nondugl HC	557	100	262	28.06.17	1	1	0	0	77	FM Jiwaka	Road
		Aipal	169	335	Nondugl HC	677	86	324	28.06.17	1	1	0	0	86	FM Jiwaka	Road
		Jumul	522	468	Nondugl HC	339	49	160	28.06.17	1	1	0	0	49	FM Jiwaka	Road
		Nolbupal	502	766	Nondugl HC	678	141	324	29.06.17	1	1	0	0	86	FM Jiwaka	Road
		Nondugl Station	220	281	Nondugl HC	278	47	133	28.06.17	1	1	0	0	47	FM Jiwaka	Road
		Street marys'p/School	18	91	Nondugl HC	71	17	34	28.06.17	1	1	0	0	17	FM Jiwaka	Road
23	Kumbal		3,503	5,134		5,241	807	2524		17	17	0	0	607		
		Kumbal 1	189	302	Nondugl HC	302	50	147	30.06.17	1	1	0	0	50	FM Jiwaka	Road
		Gerkan	269	310	Nondugl HC	374	50	179	01.07.17	1	1	0	0	48	FM Jiwaka	Road
		Korowaula	234	339	Nondugl HC	436	75	206	01.07.17	1	1	0	0	75	FM Jiwaka	Road
		Bunden	214	222	Nondugl HC	306	50	150	30.06.17	1	1	0	0	33	FM Jiwaka	Road
		Minude	105	318	Nondugl HC	278	50	133	30.06.17	1	1	0	0	10	FM Jiwaka	Road
		Miamile	62	217	Nondugl HC	154	25	73	30.06.17	1	1	0	0	25	FM Jiwaka	Road
		Yoganemul	150	199	Nondugl HC	267	47	140	01.07.17	1	1	0	0	21	FM Jiwaka	Road
		Kumbal 2	183	259	Nondugl HC	232	50	111	01.07.17	1	1	0	0	47	FM Jiwaka	Road
		Balgawa	130	255	Nondugl HC	406	50	194	30.06.17	1	1	0	0	49	FM Jiwaka	Road
		Palau	257	228	Nondugl HC	300	50	144	30.06.17	1	1	0	0	21	FM Jiwaka	Road
		Yokong Kombu	280	328	Nondugl HC	430	49	207	01.07.17	1	1	0	0	25	FM Jiwaka	Road
		Genakane	171	224	Nondugl HC	192	42	92	30.06.17	1	1	0	0	42	FM Jiwaka	Road
		Wambur	417	761	Nondugl HC	259	30	123	30.06.17	1	1	0	0	24	FM Jiwaka	Road
		Gui	226	298	Nondugl HC	310	50	148	01.07.17	1	1	0	0	49	FM Jiwaka	Road
		Yambuna	218	268	Nondugl HC	233	39	111	01.07.17	1	1	0	0	25	FM Jiwaka	Road
		Elu	267	262	Nondugl HC	330	50	159	01.07.17	1	1	0	0	13	FM Jiwaka	Road
		Niglgogl	130	344	Nondugl HC	432	50	207	30.06.17	1	1	0	0	50	FM Jiwaka	Road
24	Domil		4,361	3,979		4,743	684	2255		11	10	0	0	462		
		Domil	609	704	Nondugl HC	367	62	174	29.06.17	1	1	0	0	61	FM Jiwaka	Road
		Domil Ep	543	715	Nondugl HC	846	132	400	29.06.17	1	1	0	0	54	FM Jiwaka	Road
		Domil Mi	333	356	Nondugl HC	550	66	261	29.06.17	1	1	0	0	4	FM Jiwaka	Road
		Damar	413	448	Nondugl HC	266	40	128	29.06.17	1	1	0	0	13	FM Jiwaka	Road
		Arnge	461	437	Nondugl HC	811	87	387	29.06.17	1	1	0	0	57	FM Jiwaka	Road
		Karepa	701	482	Nondugl HC	590	81	276	29.06.17	1	1	0	0	87	FM Jiwaka	Road
		Urup 1	452	361	Nondugl HC	398	66	187	29.06.17	1	1	0	0	39	FM Jiwaka	Road
		Nukem	444	352	Nondugl HC	387	83	185	29.06.17	1	1	0	0	81	FM Jiwaka	Road
		Eselkul	86	52	Nondugl HC	275	30	136	28.06.17	1	1	0	0	30	FM Jiwaka	Road
		Kauns	239	0	Nondugl HC	253	37	121	29.06.17	1	1	0	0	36	FM Jiwaka	Road
		Karepa Community School	80	72	Nondugl HC					1						Covered Under Karepa Village
25	Kapalku		3,972	4,572		3,825	728	2,125		11	10	10	0	163		
		Kapalku	553	491	Dona SHC	530	106	310	23.06.17	1	1	1	0	9	FM,AM	Road
		Kumbal	47	447	Dona SHC	200	50	110	23.06.17	1	1	1	0	11	FM,AM	Road
		Dona	711	829	Dona SHC	1,100	188	593	25.06.17	1	1	1	0	50	FM,AM	
		Kupand	267	485	Dona SHC					1						In South Waghi ward 17
		Kulka	267	256	Dona SHC	177	32	96	24.06.17	1	1	1	0	0	FM,AM	Road
		Dona Las	308	245	Dona SHC	218	48	116	23.06.17	1	1	1	0	6	FM,AM	Road
		Kopong	204	425	Dona SHC	261	49	142	23.06.17	1	1	1	0	19	FM,AM	Road
		Donu	356	266	Dona SHC	173	43	101	24.06.17	1	1	1	0	8	FM,AM	Road
		Tolpa	802	633	Dona SHC	782	147	441	25.06.17	1	1	1	0	31	FM,AM	Road
		Wagi Dande	403	340	Dona SHC	252	36	136	25.06.17	1	1	1	0	29	FM,AM	Road
		Dona Primary School	55	156	Dona SHC	132	29	80	22.06.17	1	1	1	0	0	FM,AM	Road
26	Banz Urban		2,434	3,293		3,948	636	1,869		4	4	4	0	51		
		Commercial Area	913	812	Banzwan HC	699	114	327	21.06.17	1	1	1	0	2	NBC Jiwaka	Road
		Catholic Mission	596	945	Banzwan HC	1,488	187	694	15.06.17	1	1	1	0	38	NBC Jiwaka	Road
		Wara - Tombul	269	406	Banzwan HC	365	76	185	16.06.17	1	1	1	0	5	NBC Jiwaka	Road
		Kudjip - Banz Roadside	656	1,130	Banzwan HC	1,396	259	663	18.06.17	1	1	1	0	6	NBC Jiwaka	Road