

# ROTARIANS AGAINST MALARIA



## LONG LASTING INSECTICIDAL NET DISTRIBUTION REPORT

### Chimbu Province

Carried Out In Conjunction With The Provincial And District Government Health  
Services And The Church Health Services Of Chimbu

With Support From Against Malaria Foundation And Global Fund

**5 July to 28 August 2017**



## **Table of Contents**

Executive Summary .....	3
Background.....	4
Schedule .....	6
Methodology.....	6
Results .....	10
Conclusions.....	12
Acknowledgements .....	13
Appendix One – History Of LLIN Distribution In PNG .....	15
Appendix Two – Malaria In Chimbu Compared With Other Provinces .....	18
Appendix Three - Malaria By Altitude .....	20
Appendix Four – Other Photographs .....	21
Appendix Four - Map Of Chimbu Showing Census Points Of 2000 Census .....	22

Annex One, Two And Three show detailed data of each district

## Executive Summary

Chimbu is a mountainous province of PNG which has some low lying stable malarial areas in the south of the province and in the north areas of the province above 2000m which is considered which are considered malaria free.

A survey and distribution of Long Lasting Insecticidal Nets (LLINs) to family level was carried out in the Chimbu Province between 5 July to 28 August 2017 in the districts of Chuave, Karimui Nomane and Kerowagi.

Table One shows the estimated population and actual population found in each district together with the number of LLINs distributed in each district. This resulted in distribution 82,991 LLINs to a population of 173,367 people resulting in a distribution of 49 nets for every 100 people in the province.

**Table One – Population And Nets Distributed In 2017**

District	Population Surveyed 2014	Estimated Population For 2017 Based On 2014 Survey	Population Surveyed 2017	House Holds Surveyed 2017	Nets Issued 2017	Growth Rate Against 2014 Survey	Growth Rate Against 2017 Against 2011 Survey	Nets Distributed Per 100 People
Chuave	43,262	46,045	48,084	10,579	23,099	3.59	3.58	48.0
Karimui	27,318	29,075	30,018	4,902	14,430	3.19	3.38	48.1
Kerowagi	78,404	83,448	95,265	17,050	45,462	6.71	3.65	47.7
Totals	148,984	158,568	173,367	32,531	82,991	5.18	3.58	47.9

A further 292 LLINs were donated to health centres as nets were surplus to requirement and in most cases could not be easily returned to a central location. These nets would be used by pregnant mothers and for hospital beds where needed.

The overall cost of the programme was 315,295.08 Kina resulting in a cost of about 3.80 Kina or US\$1.15 per net delivered which was about 2% over the anticipated overall budget. There were overspends in car hire but this was balanced by savings in all other budget lines.

This distribution was carried out during the Parliamentary National Elections of 2017. This distribution should have also covered the district of Gumine and the Local Level Government (LLG) of Salt Nomane in the District of Karumui Nomame and part of Kerowagi accessible only from Gumine. However, conditions due to election related violence made this impossible and these areas will now have to be done next year. Otherwise, in all other areas, survey and distribution passed without incident except in Negabo where the RAM officer was robbed and local people were demanding very high prices for their assistance.

Feedback from partners and communities suggest they were happy with the methodology used as the process appeared transparent to all concerned. However, as always, there were a few families who complained that they did not receive enough nets but for the most part it is believed that this was a result of families not fully understanding the allocation system used.

This distribution of LLINs was funded through a donation of nets from the Against Malaria Foundation (AMF) with the costs of distribution covered by Global Fund (GF).

The history of LLIN distribution in PNG and Chimbu Province is discussed in Appendix One and the malaria situation and stratification of malaria in Chimbu is discussed in Appendix Two and Appendix Three. At the end of the document are Annexes which show the detailed data of nets given to each village in the three districts covered in this distribution.



**Fig.1 – Plane being unloaded in Negabo in Karamui and nets delivered to Negabo Health Centre**

## **Background**

Rotarians Against Malaria (RAM) is a nationally based organisation which was formed in 1997 by the Port Moresby Rotary Club in recognition of the tremendous burden that malaria imposes on the people of PNG.

RAM has a mandate to work in malaria control and the distribution of LLINs in Papua New Guinea and has been working for many years with the National Department of Health (NDOH) and other partners including bilateral agencies such as UNICEF and WHO (World Health Organisation), NGOs and church groups. (See Appendix One for full history of LLIN Distribution)

Since 2010, RAM has been coordinating the distribution of nets to all districts and provinces on a three-year continuous cycle. This effectively means that RAM visits every village in PNG every three years. RAM is funded by the Global Fund and since 2017 also from Against Malaria Foundation which supplied PNG with all its nets and the Global Fund the distribution and other administration costs.



**Fig.2 Training Of Volunteers In Negabo in Karamui Nomane**

Generally, LLINs have been distributed to household level throughout the country but when shortage of funds have occurred, different strategies of distribution have been used.

PNG can be divided into four epidemiological zones.

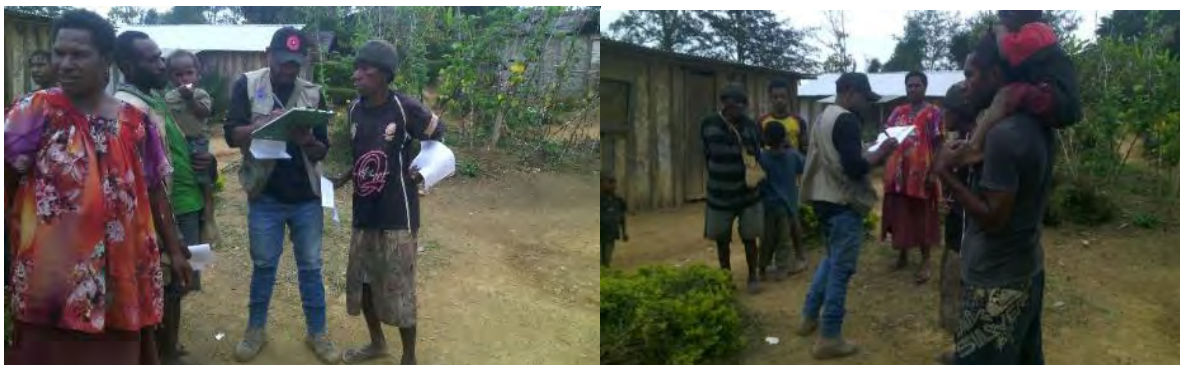
- a) Areas which lie above 2000m in altitude are considered none malarial and from now will no longer receive LLINs.
- b) Low lying areas of the country up to 1200m which have stable malaria endemicity and often have poor access to health continue to have household distributions.
- c) Areas from 1200 to 1600m are considered of generally low malaria transmission but can be epidemic in nature.
- d) Highlands regions between 1600 to 2000m in altitude such as Mount Hagen generally have very low malaria endemicity and generally easy access to health services. This zone is generally has only *P. vivax*.
- e) Urban and peri-urban areas such as Port Moresby are generally considered low risk to malaria even though they lie in low lying areas but access to health is considered easy.

From 2010 to 2014, all areas of PNG received household distribution. As a result of this stratification and when funds were reduced such as the end of 2014, areas above 2000m no longer received nets and areas from 1600 to 2000m only received under five campaigns in 2015 and 2016. However, due to the introduction of Against Malaria Foundation (AMF) in 2017, all areas now once again receive household distribution of nets except those above 2000m.

Only the northern part of Chimbu lies above 2000m, so therefore in 2017, all areas targeted for LLIN distribution received household distribution at a rate of approximately one net for every two people.

For household distributions, all LLIN distributions regardless of where they are carried out must include a survey and a distribution phase though implementation methods may vary considerably depending on circumstance. RAM's approach has been to concentrate on quality and develop methodologies that ensure that all recipients in an area actually receive nets and that this can be reported accurately.

One of the conditions of the AMF donation is that RAM would strengthen the way in which surveys are carried out. These new innovative processes are described in the Methodology Section and are now being carried out since the beginning of 2017. From 2010 to 2016, following a village survey, a village meeting was called where all the family names of the survey were called out so that villagers could know that they had been included in the survey. The major change to this survey methodology instigated by AMF is that a summary of every village survey is posted for 24 hours in a public place so that villagers can ensure that their names have been included in the survey. As a further verification, RAM and/or local health team members carry out random house surveys of 6% of households (three households in every survey book) in every village to ensure that the survey process has been carried out correctly.



**Fig.3 – Carrying Out Village Verification In Wangoi, Chauve District**

The other major change to the original PNG programme of 2004 to 2009 carried out by the NDOH is that nets are allocated to families on a needs basis rather than simply the number of people in the family. Data analysis of National Capital District (NCD) data has shown that this gives a ratio of nets needed to be about 47 for every 100 people. In the previous LLINs distribution of Round Three in 2006 to 2010, nets were allocated at a rate of one net to every 2.5 people. With the programme only receiving 80% of needs, and most provinces distributing for example two nets to families of three, in practically every province, nets ran out before the end of the distribution. The RAM programme makes all attempts to assure that this does not happen by collecting all population information first and then allocating the nets based on needs as well as availability of nets to ensure that all families receive nets throughout any given province. The only scenario where survey and net distribution may be simultaneous is in very remote locations where it is not practical to return a second time.

In terms of coordination, RAM officers are allocated to specific LLGs or health centres where they coordinate the programme together with local health staff. In this capacity, RAM officers act as facilitators in terms of technical guidance to district health teams in each LLG as well as acting as financial officers and assuring quality control of activities taking place.

**Schedule**

This distribution took place in the eighth year in which RAM has been involved in the distribution of nets with Provincial Health Authorities in PNG. Survey and distributions were carried out as per the table below with the programme starting in the fly in areas of Karimui Nomane then followed by Chuave and lastly Kerowagi.

**Table Two**  
**General Timetable Of Activities In Chimbu**

District	Target Population	Survey		Distribution	
		Start	Finish	Start	Finish
Chuave	46,045	16.07.17	20.07.17	20.07.17	30.07.17
Karimui	29,075	07.07.17	11.07.17	10.07.17	17.07.17
Kerowagi	83,448	18.07.17	16.08.17	01.08.17	27.08.17

**Methodology**

Prior to planning and all implementation, a master list of villages of Chimbu was drawn up using data from the 2000 Census and the last RAM survey of 2014. Villages in the list are organised by LLG and Ward. In this master list, the estimated population for 2017 for each village is recorded in two ways, first estimated from the 2000 Census figures and the estimated annual growth rate for Chimbu and by taking the population surveyed in 2014 and applying the annual growth rate to each village.

Health Centres form the hub from which distribution takes place in all areas to the respective villages in each health centre’s catchment area. Therefore, with the planning data at hand, the project manager of RAM works together with the Provincial Health Office to allocate every village to its nearest health centre (government or Church Based) and outlines how each village is reached from each health centre. From this it is possible to create a budget, estimate how many nets are needed to be sent to each health centre and work out any other logistic considerations such as use of airplanes or boats to deliver nets to some areas.

Once all logistics have been calculated and nets delivered to the province or district, a RAM team will travel to the province. Once in the province, RAM officers are allocated to work with each health centre which becomes the centre of operations for each area.

With the arrival of RAM officers, each health facility identifies staff members or non-health volunteers to be involved with the programme and these became the District Health Team (DHT) if health staff or team leaders (if not health staff) responsible for the survey and distribution of nets. Each DHT and team leaders work only in the area in which the health facility is based.

Before any activities take place, RAM officers are expected to work with health staff and other team leaders to make detailed plans of their activities for training, survey, verification and distribution of nets. This involves making maps of the area, deciding how many teams are needed, and then making detailed work plans for each of the team members. This process also involves verifying that no villages have been left out of the census list and that the whole area is covered.

Also prior to field activities in any given LLG or health centre, a social awareness campaign was carried out in all villages informing villagers of the upcoming survey and distribution. This was also used as an opportunity for RAM officers to become familiar with each area. During this process, key malaria messages were also discussed with villagers such as the need to use LLINs every night.

During the social awareness campaign, a one-day training meeting is normally held at each health facility for all DHT members in that area who together carry out the micro-planning exercise. These training and micro-planning sessions as well as all other activities associated with the programme are coordinated by RAM project officers together with health counterparts at provincial and district level. RAM officers also have the responsibility to ensure the LLINs operation kept in line with the original budget.

### **Survey**

The survey was carried out in the following way.

- 1) When arriving at a village and before starting the census process, a meeting was held with village elders explaining the process.
- 2) If village elders have an up to date list of all village occupants, the team would use this list to compile a census.
- 3) Where a village is small, e.g. less than 30 families, team members may carry out the census by themselves.
- 4) Where villages were large, village volunteers were identified with the assistance of the village chiefs, elders, health staff and councillors. One volunteer was chosen for each group of about 50 families with volunteers chosen by natural divisions in the village e.g. clans where one volunteer would make a list of only one clan. These volunteers were trained to carry out the survey by actually surveying houses with the team leaders supervising and assessing the recording. Once the team leader was confident that the volunteers knew the survey methodology, they were left to continue with the household survey with survey teams returning within an agreed period to verify the work of the survey volunteers, collect survey books and also to pay the survey volunteer if the work has been carried out correctly.
- 5) For each household surveyed, all family members who normally resided at the household for a minimum of nine months were recorded by Name, Age, Sex and Relationship to head of household. All names and other information was recorded in the survey book with one survey form being used for each household.

- 6) After surveying a house a white copy of the census form was given to the head of household or most senior person present in the household.
- 7) Where a whole household was absent, information was taken from the neighbours and the white survey form left with them.
- 8) In all cases, after the census/list was finished, all the information about the households and number of household members is entered into a summary sheet. This list is then hung in a public place where all villages can verify that the right number of family members for each household has been recorded and that all families have been included in the survey. After the list has been in a public place for 24 hours, then the volunteer requests for the RAM officer and or DHT to visit the village.
- 9) RAM officers and DHTs must visit three households randomly from each survey book (6%) and verify that the survey has been carried out correctly. Only when this has been done, then the volunteer can be paid.
- 10) If a village was surveyed by more than one volunteer, then volunteers are asked to work together so that lists can be hung together and the village volunteers can be verified at the same time. This process also ensures that households do not appear on more than one list. After this process, both the volunteers and the village elders sign a form to verify that this was done.
- 11) All village volunteers received a standard payment of 20 kina a day. Experience has shown that volunteers can usually only survey about 30 families a day, so for the most part, they would receive up to two days allowance to complete a survey book.
- 12) All volunteers are also given a small training manual. Contained in this training manual are key health education messages about malaria which volunteers are expected to discuss with households. This perhaps is the only project in PNG that is able to reach down to potentially every household in the country.

To aid with the survey, the master plan with names of all census units in all the wards in the district had been printed out and given to all the team leaders of the DHTs. This document also provides the projected population per census unit as well as other information which might be useful to the area concerned.



**Fig.4 Verification In Chuave District (Left and Right) With Village List Hung Up (Middle)**

After getting data from each village, the information is immediately compared with the data on the master sheet. Where the surveyed population is very different from the projected population, the project staff make enquiries into the reasons for these discrepancies.

Following the survey, all data was entered into a computer where possible or entered into a master sheet of the area concerned. For each village, nets were allocated to each family on a needs basis and this is also entered into the computer or master sheet. This process ensured that all villages received nets and that there would be no shortfalls.

The needs basis in PNG is based on the assumption that children under the age of six sleep with their parents, after which boys and girls are grouped separately from their parents. Nets are also allocated based on the number of children in the house their ages, and whether there are other dependents living in the households such as grandparents. In principal, nets are allocated at a rate of one net for up to three people of each type of age group or sex i.e. one net for every three people in each type of sleeping area. A full description of the allocation system can be obtained from RAM officers but suffice to say a family of four could receive between one to four nets depending on the sex and age of family members.

Nets are allocated to each LLG based on assumed populations of each LLG and it was important prior to the distribution to ensure that when allocations had been carried out to families and villages that there were enough nets available to cover each and every family.

### ***Distribution***

There was no official launch for the LLINs distribution. However, prior to distribution there was a social awareness phase where the project teams informed communities about the arrival of the distribution teams, especially those accessible by road.

The LLINs were then distributed to teams depending on the needs of each village. The LLINs were then distributed by village or wards depending on whether villages were close together. In this latter case, a central location was identified in the ward and distribution of nets was carried out. In terms of distribution sites, villages were organised in different ways to make the flow of nets easy and effective. However, the actual organisation depended on each team and the structure of the various groups receiving nets.

All net packaging was opened at distribution with a district code printed on each net e.g. CH17 for Chimbu 2017. This code is added to identify nets to assist in future monitoring exercises as well as discouraging householders from selling the nets on the open market.

Some examples of the process used to control the crowd includes;

- Arranging the people according to the serial numbers in the survey books e.g. 72001 - 72050 and then calling the names and the serial numbers.
- Call the names of the owners of the households, collect the white copy and give the nets.
- Wait for everyone to come to the distribution site, collect all the white copies and sort the copies with the pink copies. Call the names on the white copies and give the nets.

Some of the following control methods were used.

- Everyone who presented with a white copy was given LLINs at the distribution site with LLINs only given to the owner of the house or a member of the house whose name is written on the back of the survey form.
- Those people who lost the white receipts were left to the end of each distribution, with nets only being issued if the name of the person collecting the nets was on the back of the pink copies.
- For those families who were absent at the time of distribution, their names were written in a form – MOSQUITO NETS HELD IN TRUST BY VILLAGE CHIEFS FORM and the nets allocated to missing families were given to chiefs or any person entrusted by the community with the forms for these families to collect their LLINs later.

- Householders are now being asked to make a thumb print as proof of delivery of nets to a household. The Global Fund had formally asked that householders should sign for delivery of nets. This was considered problematic as many householders are illiterate and even where householders can write, this process takes a long time in what is often a very chaotic and charged environment where speed is of the essence.

It should also be noted, that due to the very remote locations found in some LLGs of the province, surveys and distributions took place at more or less the same time in some places. This is particularly true for mountainous villages or small islands which might take several hours or days to reach. In these instances, estimations based on the 2000 Census data and local knowledge to pre-allocate nets to these areas. Teams were then dispatched to these areas with nets. On arrival in these remote places, surveys took place and were immediately followed by a distribution based on the survey results.

### **Other details**

In the case of Chimbu Province, all LLINs were delivered in six containers to Lae by ship from Vietnam (via Singapore) where they were custom cleared. From Lae, four containers were sent to Goroka and two to Mount Hagen. Containers sent to Mount Hagen were delivered to Kerowagi. However, containers that went to Goroka should have been sent to Chuave and Kundiawa by Side Lifter truck but political unrest in the Chuave areas, it was not safe to send the side lifter trucks so the containers were unpacked in Goroka and sent by smaller trucks directly to the health centres concerned in Chuave. In Kerowagi, the containers were unpacked and sent to health centres and from health centres in Chuave and Kerowagi the nets were sent to be distributed to villages. In total six containers of nets were delivered to PNG for Chimbu but only four used as it was not possible to deliver nets to Gumine and Salt Nomane. Other nets for Karamui were also unloaded in Goroka and put directly onto planes from where they were flown together with RAM staff into the four Karamui Health Centres.

## **Results**

**TABLE THREE**  
**Nets Distributed At District Level In Chimbu**

District	Population Surveyed 2014	Estimated Population For 2017 Based On 2014 Survey	Population Surveyed 2017	House Holds Surveyed 2017	Nets Issued 2017	Growth Rate Against 2014 Survey	Growth Rate Against 2017 Against 2011 Survey	Nets Distributed Per 100 People
Chuave	43,262	46,045	48,084	10,579	23,099	3.59	3.58	48.0
Karimui	27,318	29,075	30,018	4,902	14,430	3.19	3.38	48.1
Kerowagi	78,404	83,448	95,265	17,050	45,462	6.71	3.65	47.7
Totals	148,984	158,568	173,367	32,531	82,991	5.18	3.58	47.9

This programme covered an area with an estimated population of 158,568 people. After the survey, a population of 173,367 people were recorded to which 82,991 LLINs were distributed. This gave an overall ratio of nets distributed of 47.9 nets per 100 people.

Table Three shows a summary of the population and nets distributed by district and Table Four shows distribution by LLGs. Table Two also shows the population surveyed in 2014 and from this it can be calculated the annual growth rate of each and LLG. Growth rates of Chimbu had been previously been calculated against the 2000 Census to give a growth rate of 2.1%. This data clearly shows that the growth rate needs to be recalculated as 3.5% as originally indicated

by the 2000 Census. It should also be noted that due to the Tribal Fights in Gumine, two wards in Kup Rural of Kerowagi District were not done as the only way to access this area was through Gumine District.

**TABLE FOUR**  
**Nets Distributed At LLG Level In Chimbu**

LLG	District	Population Of Targeted Areas In 2014	Target Population 2017	Population Surveyed 2017	House Holds Surveyed 2017	Nets Issued 2017	Growth Rate Against 2014 Survey	Nets Distributed Per 100 People
Chuave Rural	Chuave	16,259	17,305	17,269	3,247	8,478	2.03	49.1
Elimbari Rural	Chuave	13,607	14,482	14,706	3,366	7,045	2.62	47.9
Siane Rural	Chuave	13,282	14,258	16,109	3,966	7,543	6.64	46.8
Karamui Rural	Karimui	27,318	29,075	30,018	4,902	14,412	3.19	48.0
Gena Waugla Rural	Kerowagi	23,776	25,306	29,525	5,563	14,319	7.49	48.5
Kerowagi Rural	Kerowagi	36,764	39,129	50,188	8,733	23,738	10.93	47.3
Kup Rural	Kerowagi	17,864	16,326	15,552	2,754	7,441	-4.51	47.8
<b>Totals</b>		<b>148,870</b>	<b>155,881</b>	<b>173,367</b>	<b>32,531</b>	<b>82,976</b>	<b>5.21</b>	<b>47.9</b>

Referring to Table Five, it can be seen that a further 292 LLINs were donated to health centres as nets were surplus to requirement and in most cases could not be easily returned to a central location. These nets would be used by pregnant mothers and for hospital beds where needed. The distribution of these nets can be seen in Table Four.

**TABLE FIVE**  
**Nets Donated To Health Centres**

District	LLG	HC	Donated
Chuave	Siane Rural	Yandime HC	63
Chuave	Siane Rural	Keveru HC	68
Karimui Nomane	Karimui Rural	Sigamuru HC	79
Kerowagi	Gena Waugla Rural	Mingende H	34
Kerowagi	Kerowagi Rural	Miunde HC	48
<b>TOTAL</b>			<b>292</b>

Referring to Table Six it can be seen that the overall cost of the programme was 315,295.08 Kina resulting in a cost of about 3.80 Kina or US\$1.15 per net delivered which was about 2% over the anticipated overall budget. There were overspends in car hire but this was balanced by savings in all other budget lines.

**TABLE SIX**  
**Cost Of Programme In Chimbu**

Budget Line	Budget	Actual	Variances	% Variances
Human Resources	K106,350.00	K118,025.75	-11,675.75	111.0
Fuel Cost	K35,394.00	K28,919.00	6,475.00	81.7
Car Hire Cost	K152,000.00	K168,402.00	-16,402.00	110.8
Aircraft Hire Cost	K6,000.00	K6,136.25	-136.25	102.3
Stationeries/Supplies	K3,000.00	K4,573.98	-1,573.98	152.5
5% Contingency	K15,137.20	K2,173.90	12,963.30	14.4
<b>Total</b>	<b>K317,881.20</b>	<b>K328,230.88</b>	<b>-10,349.68</b>	<b>103.3</b>

The project also looked at radio or cell telephone coverage in the different parts of Chimbu. Referring to Table Seven, the data suggests that coverage of both cell networks and radio is generally good in Chimbu with the exception of some remote places in Karamui Nomane. However, despite this, it would appear that less than 25% of houses have a radio which would include a cell phone as most modern cell phones have a radio within them.

**TABLE SEVEN**  
**Cell and Radio Coverage In Chimbu**

District	Villages	House Holds Surveyed	Digicel	Bmobile	City Phone	Houses with Radios	Villages With Radio Networks
Chuave	231	10,579	212	52	0	2,486	213
Karimui Nomane	96	4,902	62	0	0	219	55
Kerowagi	210	17,050	194	117	0	4,774	209
<b>Total</b>	<b>537</b>	<b>32,531</b>	<b>468</b>	<b>169</b>	<b>0</b>	<b>7,479</b>	<b>477</b>



**Fig.5 – Distributions In Demange**

**Conclusions**

Overall it can be said that the project was a success both in terms of results and joint coordination of the project by RAM field staff members together with provincial and district health staff and the Church Health Services. Through this collaboration, the data suggests that all villages and practically all families in those villages received nets.

It must be noted however that this programme was conducted during a parliamentary election whose results were announced during the time that the RAM was in Chimbu. While election campaign period was happening, generally the situation was quiet though there had been a report of some people murdered in Kerowagi. However, once the results had been announced, there was huge problems as various political parties contested the results. This resulted in the RAM team not being able to enter Gumine District which also restricted access to Salt Nomane LLGs and well as the southern part of Kerowagi. At the time of writing this report, this situation has still not improved, so these areas will be covered in 2018.

Overall however, for the areas covered, the major achievement of the programme was also demonstrating that the new verification process introduced by RAM in 2017 with guidance from the Against Malaria Foundation was practical and was generally accepted by both health staff, communities and volunteers as the survey system is now more transparent. One result of this is that RAM officers generally received far less complaints at the time of distribution than they have done in the past.

As with other provinces in the country where RAM has operated in over the last eight years, the methodologies used appeared practical and were openly welcomed by both villagers and

implementers, particularly the practice of hanging up the list of names in the middle of the village following a survey: this allowed communities to feel that they were part of a transparent process. This is not to say that perhaps some extra people managed to slip into the books, but in general, it was felt that the system was fair and included practically everyone concerned. The use of the master lists also ensured that all villages were reached and accounted for.

The review of the data prior to the distribution was also important. This ensured that all villages and families received the correct numbers of nets. The Census Lists also from 2000 are also very important to ensure that survey teams reach all villages: without the complete list of villages, it would be very difficult to make a detailed report.

The greatest complaint still received by communities was the number of nets they received. Even though the team explain the logic of how the allocation of nets is calculated, some families were expecting one net per person, others expected it to be based on a fixed allocation based on the number of people in the family, and yet others thought they would be given nets based on the number of nets they stated they already had. This highlights that a better system of explaining the allocation system needs to be developed. In general, unlike some previous districts covered by RAM, DHTs of Chimbu assisted in the allocation of the nets which meant they were in a better position to explain the distribution system on the ground. Nevertheless, despite all the difficulties involved, it would appear that the vast majority of community members accepted the outcome and there were no real problems encountered.



**Fig.10 – Distributions At Broken Bridge In Movi**

## **Acknowledgements**

Rotarians Against Malaria would particularly like to thank Margaret Kaile (Provincial Health Advisor) and her team, specially Titus Tul (Provincial Disease Control Officer) and Siwi Muruk (Provincial Malaria Supervisor) at provincial level for their excellent cooperation, good will and help which made it a pleasure to work in Chimbu for this operation. Without their assistance, this programme would not have been possible.

We would also like to thank all the health staff in various health centres who assisted in the programme. Below is a list of people specifically mentioned by RAM officers but there are a large number of other health staff and team leaders too many to mention who assisted with their time and help throughout the survey and distribution period.

To the church partners, RAM would like to sincerely thank the Catholic, Anglican, Lutheran and SDA, Nazarene and Evangelical Bible Church Health Services for supporting RAM through its health services in their respective health centres.

RAM would also like to thank all the community members who welcomed RAM officers and health staff into their villages and assisted in making the programme work. Such community members councillors, peace officers, teachers, head masters and village health workers.

RAM would also like to thank Adventist Aviation from Goroka for safely flying our staff into the remote health centres in Karimui Nomane safely.

#### **ACKNOWLEDGEMENT LIST – CHIMBU PROVINCE 2017**

<b>NAME</b>	<b>OCCUPATION</b>	<b>INSTITUTE</b>
Casper Miopa	Officer In Charge	Wangoi Health centre
Sr. Diri Goro	Assistant Officer In Charge	Wangoi Health centre
Bonny Goro	Disease Control Officer	Wangoi Health centre
Samuel Bandi	Ambulance driver	Wangoi Health centre
John Kerenga	Deputy Disease Control Officer	Kerowaig District
Joseph Teman	Officer In Charge	Kerowagi Health Centre
Steven Gene	District Health Officer	Kerowagi District
Joel Jeremiah	Community Health Worker	Kerowagi Health Centre
Titus Maima	Provincial Disease Control Officer	Chuave District
Andrew Kumanar	Provincial Disease Control Officer	Chuave District
Late Herman Pean	District Health Officer	Chuave District
Peter Mugua	District Health Extension Officer	Chuave District
Peter Sakrias	Community Health Worker	Chuave District
Bun Maima	Ambulance Driver	Chuave Health Centre
John Kavare	Officer In Charge	Keверu Health Centre
Jackson Kiagi	Community Health Worker	Keверu Health Centre
Bob Tabie	Officer In Charge	Monono Health Centre
Ben Wenambo	Officer In Charge	Miunde Health Centre
Nimson Nimiyasi	Officer In Charge	Haia Health Centre
Jessy Simon	Nursing Officer	Haia Health Centre
Noel Tombei	Nursing Officer	Haia Health Centre
Mrs Jonita Maulua	Nursing Officer	Haia Health Centre
Elvis Mathew	Acting Officer In Charge	Negbo Health Centre
Bange Yamo	Health Chairman	Negabo Health Centre
Jerry Kubu	District Health Officer	Karamui Nomane
Wally Yalowai	Local Level Government Manager	Karamui Rural
Nelson Lewe	Community Health Worker	Sigimaru Health Worker
Joe Kora	Community Health Worker	Sigimaru Health Worker
Nimpson Himyamsi	Aid Post Officer	Yuro Aidpost
Jeffery Gore	Community Health Worker	Karilmaril Health Centre
Mr. Michael Yawe	Community Health Worker	Movi Health centre
Muriel Eremu	Officer In Charge	Movi Health Centre
Kevin Kiri	Care taker Community Health Worker	Yandime Health Centre
Joseph Dilu	Officer In Charge	Nogar Health Centre

## Appendix One – History Of LLIN Distribution In PNG

The use of Insecticide Treated Nets (ITNs) started in PNG in 1985. The PNG Institute of Medical Research (IMR) conducted one of the first trials demonstrating the health impact of treating mosquito nets with insecticide. The study, done near Madang, showed a reduction of *P.falciparum* incidence and prevalence in children below five years of age sleeping under permethrin-treated nets. The protective effect of insecticide-treated nets (ITNs) was also confirmed in many other trials around the world. As a consequence of such findings, the national malaria control program in PNG started emphasizing the use of ITNs in 1989. However, no regular or large-scale distribution of ITNs was carried out at this time.

In the following years, coverage with mosquito nets and other control interventions remained patchy and low in many parts of PNG. It was during this period that Rotarians Against Malaria (RAM) was created from the Port Moresby Rotary Club in 1997. Using a donation of 150,000 treated nets given to them from the National Department of Health (originally from AusAid), RAM successfully ran a revolving fund of nets in which nets were sold at a price which allowed the proceeds to buy more nets of an equal number. This they did successfully for many years distributing about 45,000 nets a year from 2000 to 2004.

Prior to 2004, most treated nets had to be re-treated every six months or a year which requires a lot of work and organisation. In early 2004 everything changed with the introduction of Long Lasting Insecticidal Nets (LLINs) which would last for 20 heavy duty washes and effectively no longer required to be treatment to be repeated. This change in nets also coincided with the introduction of the Global Fund into PMG known as the Global Fund Round 3.

From 2005 to 2009 the malaria programme in PNG received and delivered about 2.3 million nets throughout the country at a rate of one net for every 2.5 people. The delivery of nets to village level was under the provincial health authorities and reached most parts of the country with Rotarians Against Malaria (RAM) being responsible in delivering the containers of nets to the provinces from Port Moresby and Lae where the nets arrived from overseas.

While the programme was very successful in some areas it was not so successful in others. Problems included slow release of funds from central to provincial level, some provinces not following technical guidelines given resulting in some areas not been covered, and technical and financial reporting leaving a lot to be desired in many of the provinces. When further funds became available in what is known as the Global Fund Round Eight, it was decided that Rotarians Against Malaria (RAM) would take over the coordination of the LLIN programme.

This change has resulted in RAM being responsible for the overall coordination of the LLIN distribution of LLINs in the country particularly in the areas of quantification, procurement, reporting and delivery to provincial and district level. However, the actual delivery of nets to village level is a collaboration between RAM, provincial health authorities and district health and health centre staff.

Fig.1 shows the distribution of nets to districts and provinces from 2006 to 2009 while Fig.2 shows the distribution of nets from 2010 to 2014 and Fig.3 shows the distribution from 2015 to 2017 which includes under five distributions in 2016 and 2017. Under Five distributions had been carried out in areas above 1600m and in Port Moresby and Lae City due to lack of funds. This situation changed when support from Against Malaria Foundation was received.

Up until June 2017, a total of 8,223, 853 had been distributed under the coordination of RAM. Therefore, with the nets distributed from 2006 to 2009, this means that about 10.5 million nets have been delivered to household level in PNG since 2006. This is more than one net per every person in PNG. RAM has also distributed about another 1,2 million nets to health centres for distribution to pregnant women and for prisons and boarding schools.

It should also be noted that alongside developments treated mosquito nets, the first cases of chloroquine-resistant malaria were reported in 1976 (20). This progressed rapidly to widespread resistance of *P.falciparum*, and to a slightly lesser extent *P.vivax*, to chloroquine, amodiaquine and sulphadoxine-pyrimethamine (SP). In studies conducted between 2003 and 2005, even combination regimens of these drugs faced up to 29% resistance of *P. falciparum*<sup>2</sup>. This situation together with Global Fund Round 8 also saw the introduction of artemeter lumfantrine branded as Malawan, IPT (Intermittent Preventative Treatment) for antenatal women.

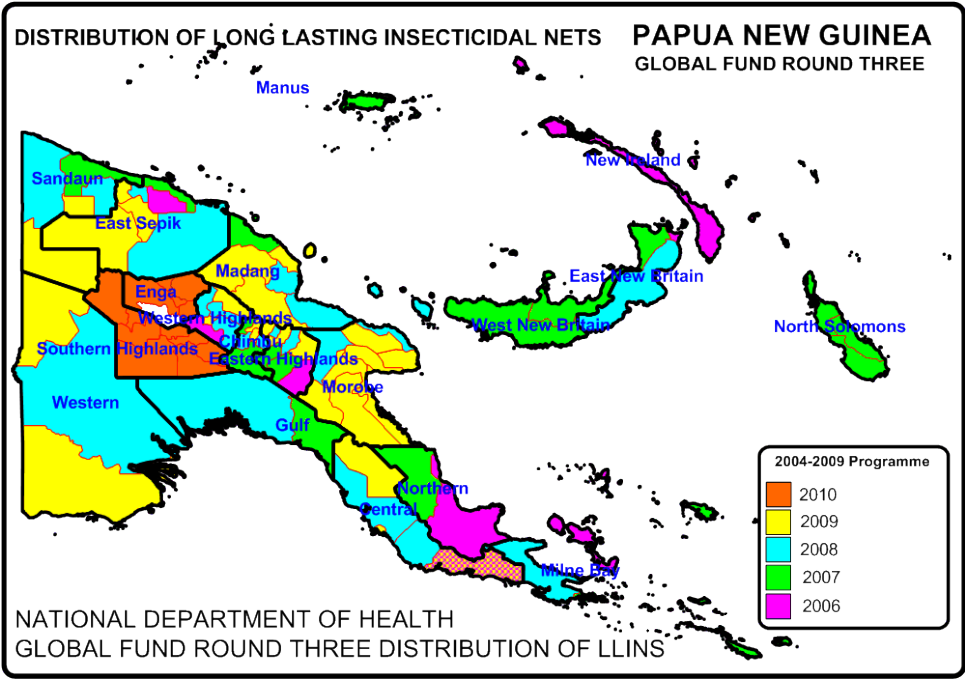


Fig. 1 Distribution Of Nets Under National Department Of Health From 2006 To 2010

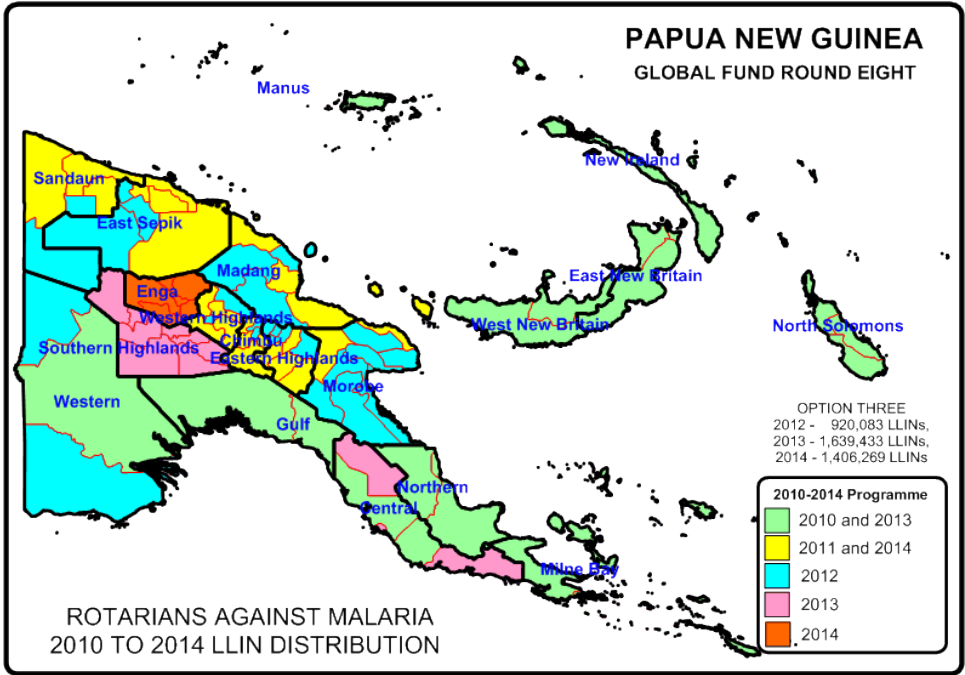


Fig.2 Distribution of LLIN Programme 2010 to 2014

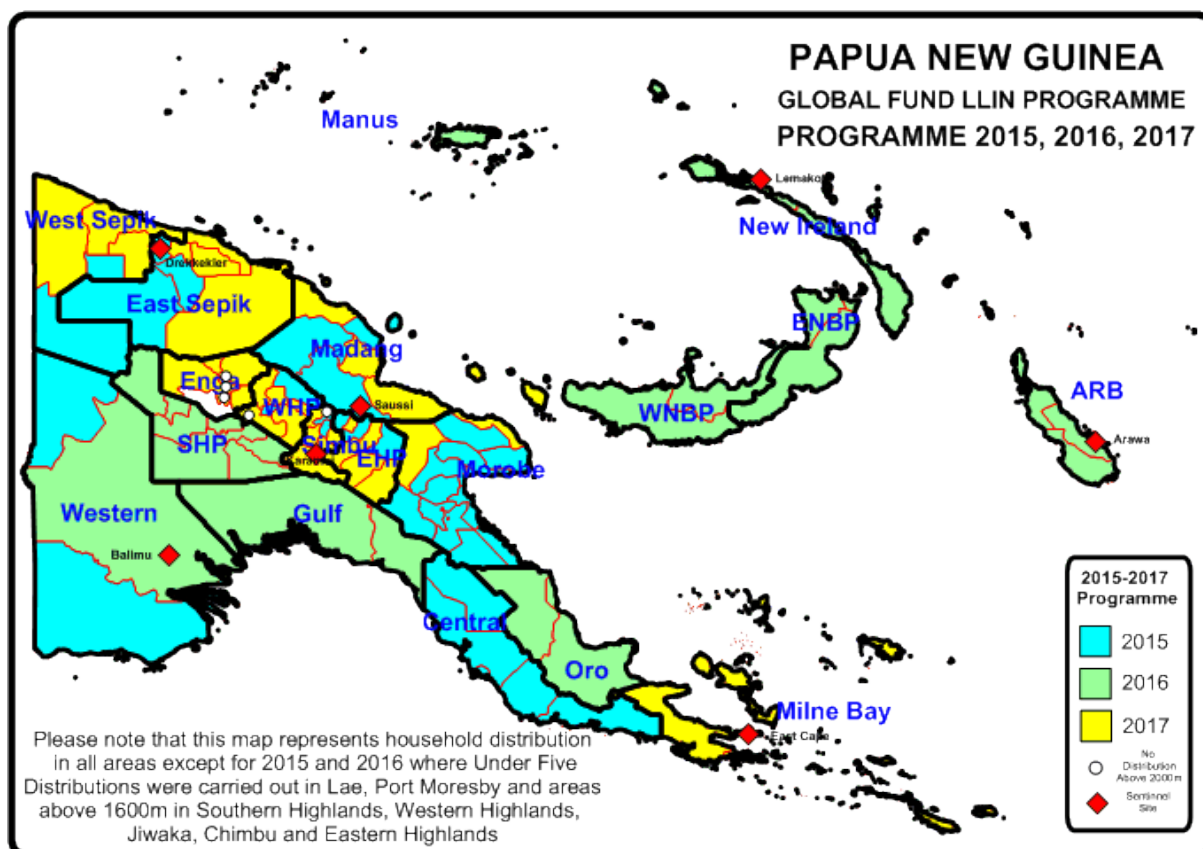


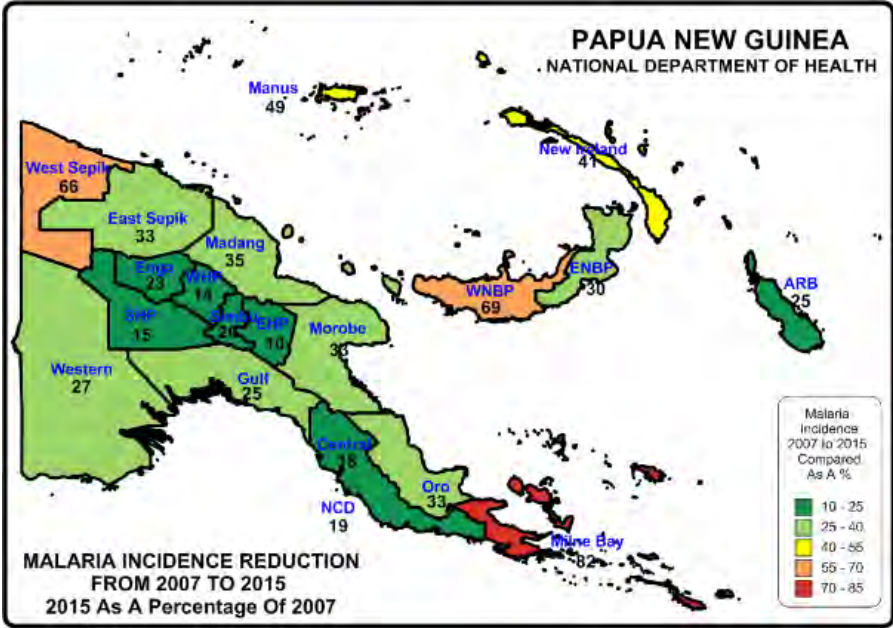
Fig.3 LLIN Distribution Programme 2015 to 2017

**TABLE ONE - LLINs Delivered In PNG Under Coordination Of RAM From 2010**

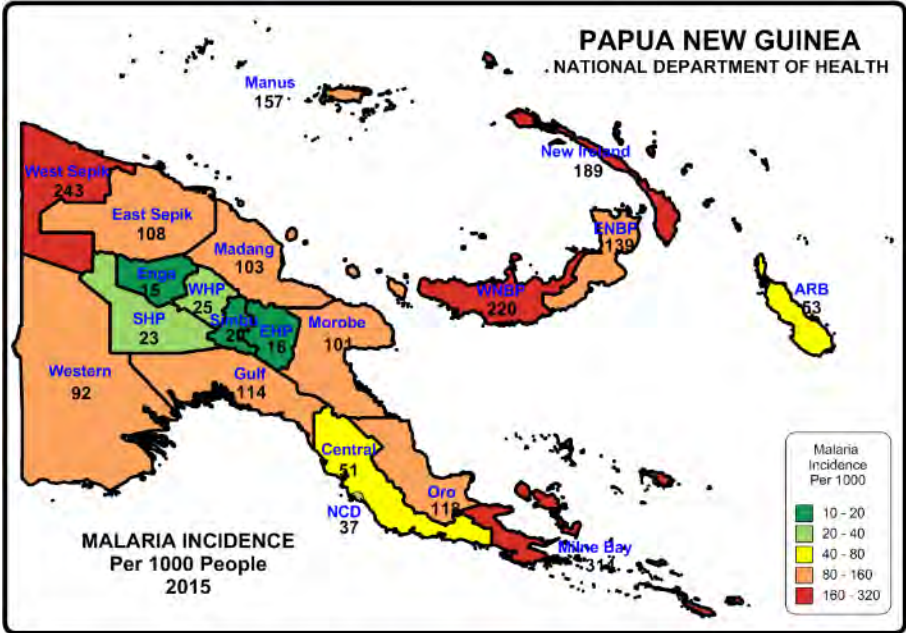
Period	Dates	Districts	Provinces	Nets Delivered
Phase One (2010-2011)	Nov 09 - Oct 11	50 Districts	18 Provinces	1,890,448
Year 3 (2012)	Nov 11 - Sep 12	27 Districts	10 Provinces	832,671
Year 4 (2013)	Oct 12 - Sep 13	28 Districts	12 Provinces	1,210,391
Year 5 (2014)	Oct 13 - Sep 14	23 Districts	11 Provinces	1,374,791
Year 5 (2014) No Cost Extension	Oct 14 - Dec 14	Okapa, Lufa, Madang, Angoram, Maprik, Yangoru Saussi, Wewak, Aitape Lumi, Nuku and Vanimo Green	EHP, Madang, East Sepik and Sandaun	454,806
Year 6 (2015)		29 Districts	11 Provinces	932,822
Year 7 (2016)		27 Districts	13 Provinces	805,597
Year 8 (2017)	Jan - Mar 2017	Kokopo, Rabaul, Gazelle, Kimbe, Alotau, Samarai Nurua, Esa'ala, Kirwina Goodenough	East New Britain, West New Britain, Milne Bay	335,330
	Apr - Jun 2017	Kompam, Wabag, Wapenamanda, Lagaip Porgera, Tambul Nebliya, Mul Bayer, Dei, Anglimp South Waghi and North Waghi	Enga, West New Britain and Jiwaka	396,997
New Funding Model				2,470,746
Round Eight				5,763,107
Overall Total Phase One and Phase Two And NFM				8,233,853

**Appendix Two – Malaria In Chimbu Compared With Other Provinces**

- Fig.1 shows the decrease of malaria from 2007 to 2015 in all provinces, Fig. 2 shows the actual malaria incidence in Chimbu compared with other provinces and Fig.3 shows annual malaria trends from 2012 to 2016. In Chimbu, it can be seen from Fig.1 that malaria decreased from 2007 to 2015 by 80% which is one of the highest reductions of malaria in the country. This is also reflected in Fig.2 which shows that the incidence of malaria in Chimbu is only 20 per 1000 people which is the lowest in the country in 2015 though this has since increased slightly in 2016 to 25 per 1000. Fig. 3 shows that the trend of incidence of malaria in Chimbu since 2012 as compared with other provinces while Fig.4 shows the malaria incidence reported since 2000 against LLIN distributions which generally show decreases in malaria each time LLINs have been distributed.



**Fig.1 – Relative Reduction Of Malaria In Provinces Of PNG**



**Fig.2 – Reported Malaria Incidence In 2015**

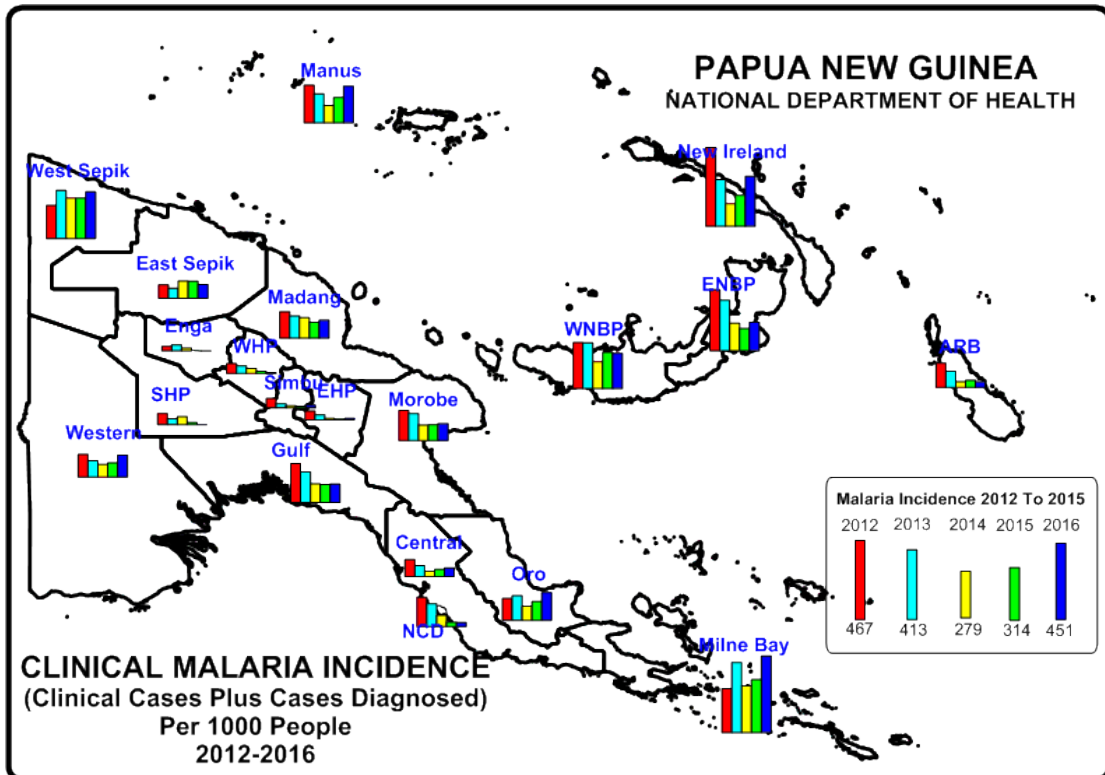


Fig. 3 - Reported Malaria Incidence In PNG From 2012 To 2016

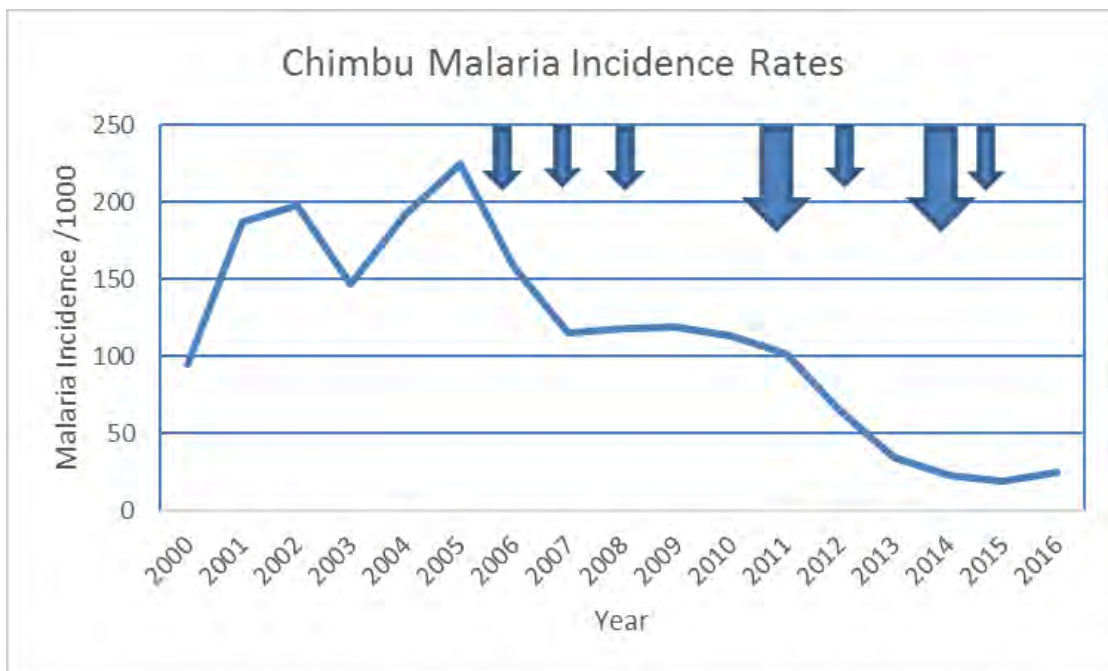


Fig. 4 – Malaria Incidence Versus Distribution Of Nets

(Blue Arrows Represent Years Of Distribution – Small Arrows show small distribution of less than three districts - Large Arrows show distributions of four Districts at a time)  
 (2007 Karamui Nomane, 2008 Chuave and Gumine and 2009 Kundiawa Gemobogl and Sinasina Yongomugl, 2011 and 2014 Chuave, Gumine, Karamui Nomane, and Kerowagi and 2012 and 2015 Kundiawa Gemobogl and Sinasina Yongomugl Under Five Campaigns)

### Appendix Three - Malaria By Altitude

From Fig. 1 and demographic data, it can also be calculated that 5.6% of the population of Chimbu live below 1200m altitude where malaria can be considered highly endemic and stable. These people live mainly in Karimui Nomane. A further 18.9% of the population live in the zone between 1200-1600m which is considered malaria epidemic in nature and most of these areas lie along the Waghi River. A further 55% live in the zone 1600-2000 metres where it is generally considered only *P. vivax* lives. The remain 20% who live in the north of the province live in areas above 2000m where malaria transmission is not considered to exist. This area includes Mount Wilhelm which is the highest mountain in PNG at a height of 4,509 m above sea level.

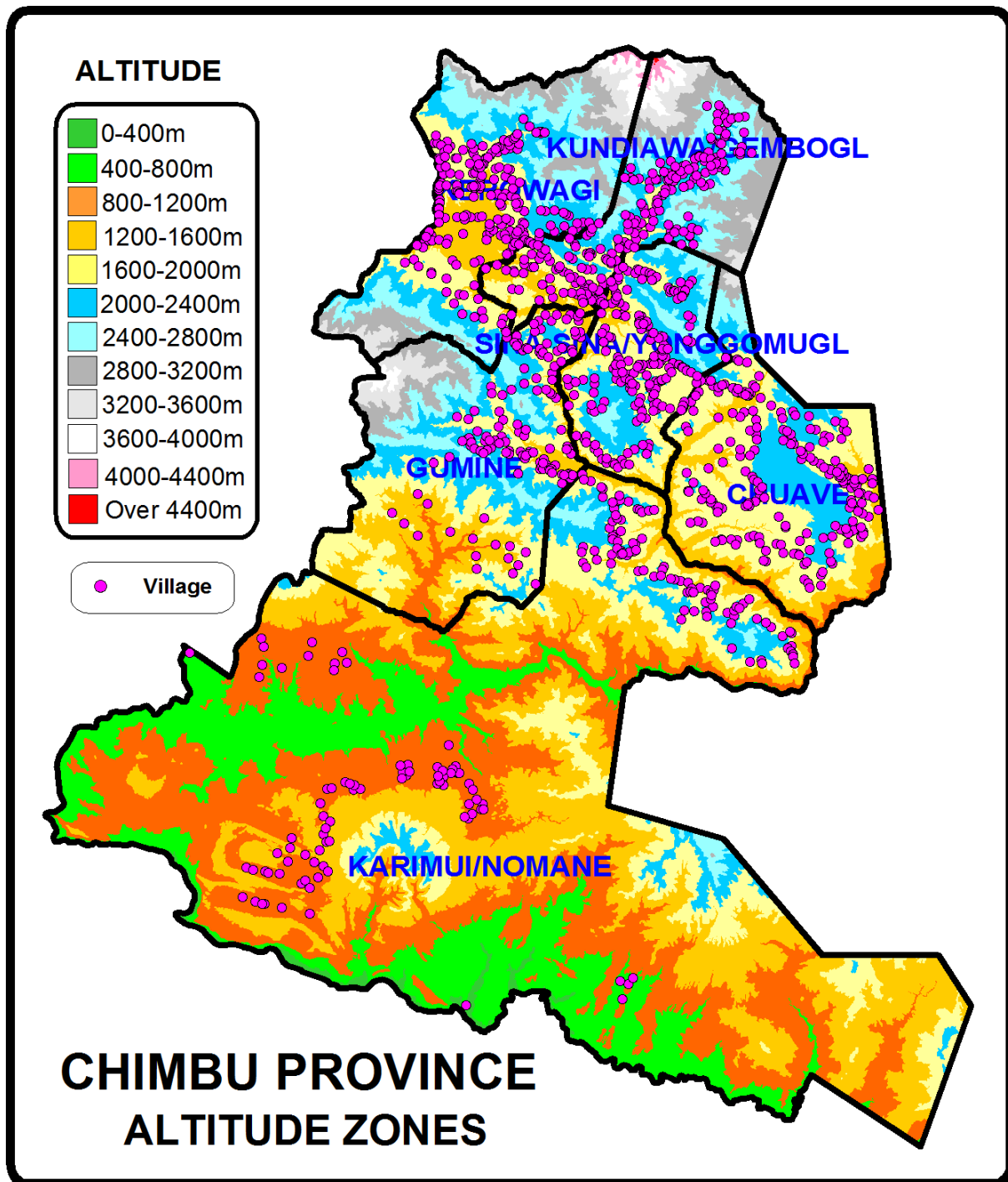


Fig.1 - Altitude Zones Of Chimbu Province

**Appendix Four – Other Photographs**



People Waiting For Net Distribution In Negabo In Karimui Negabo



Unloading Nets From Containers In Goroka (Left) Slippery Roads In Chimbu



Container In Kerowagi Being Unloaded (Left) and Broken Bridge In Which Is Repaired After Payment (Right)



Appendix Four - Map Of Chimbu Showing Census Points Of 2000 Census



## ANNEX ONE

CHIMBU PROVINCE  
CHUAVE DISTRICT POPULATION 2017  
LLIN DISTRIBUTION SUMMARY SHEET

LLG	WARD	VILLAGE	Estimated 2017 Population Based On Census	Projected Population Based On 2014 Survey	Health Centre	Population Surveyed	House Holds Surveyed	Nets Issued	Date Of Distribution	Villages	Digicel	Bmobile	Citifon	Houses With Radios	Radio Networks	Comment
<b>CHUAVE</b>			<b>46,045</b>	<b>46,045</b>		<b>48,084</b>	<b>10,579</b>	<b>23,099</b>		<b>231</b>	<b>212</b>	<b>52</b>	<b>0</b>	<b>2,486</b>	<b>213</b>	
<b>CHUAVE RURAL</b>			<b>15,295</b>	<b>17,305</b>		<b>17,269</b>	<b>3,247</b>	<b>8,508</b>		<b>52</b>	<b>52</b>	<b>52</b>	<b>0</b>	<b>1,239</b>	<b>52</b>	
1	SIRIKOGE		<b>771</b>	<b>1,091</b>		<b>1,245</b>	<b>210</b>	<b>616</b>		<b>4</b>	<b>4</b>	<b>4</b>	<b>0</b>	<b>116</b>		
		Sirikoge	382	530	Chuave HC	560	80	273	26.07.17	1	1	1	0	40	NBC/FM	Road
		Sirilias	195	245	Chuave HC	127	31	64	26.07.17	1	1	1	0	6	NBC/FM	Road
		Moi	160	247	Chuave HC	279	49	137	26.07.17	1	1	1	0	21	NBC/FM	Road
		Sirikoge C/S	34	69	Chuave HC	279	50	142	26.07.17	1	1	1	0	49	NBC/FM	Road
2	EMEGI		<b>821</b>	<b>775</b>		<b>523</b>	<b>106</b>	<b>259</b>		<b>2</b>	<b>2</b>	<b>2</b>	<b>0</b>	<b>39</b>		
		Emegi	237	255	Chuave HC	252	50	124	26.07.17	1	1	1	0	9	NBC/FM	Road
		Morokopu	583	519	Chuave HC	271	56	135	26.07.17	1	1	1	0	30	NBC/FM	Road
3	MEMBIMANGI		<b>1,132</b>	<b>941</b>		<b>969</b>	<b>193</b>	<b>478</b>		<b>4</b>	<b>4</b>	<b>4</b>	<b>0</b>	<b>52</b>		
		Aran	209	244	Chuave HC	230	50	114	26.07.17	1	1	1	0	28	NBC/FM	Road
		Membimangi	512	225	Chuave HC	212	50	104	26.07.17	1	1	1	0	10	NBC/FM	Road
		Kiau	287	224	Chuave HC	271	43	134	26.07.17	1	1	1	0	0	NBC/FM	Road
		Kumul Sda	124	249	Chuave HC	256	50	126	26.07.17	1	1	1	0	14	NBC/FM	Road
4	TOGOMA		<b>1,728</b>	<b>1,866</b>		<b>2,239</b>	<b>328</b>	<b>1,099</b>		<b>4</b>	<b>4</b>	<b>4</b>	<b>0</b>	<b>244</b>		
		Togoma	480	439	Chuave HC	416	87	204	26.07.17	1	1	1	0	46	NBC/FM	Road
		Nubuni	796	781	Chuave HC	1,291	150	636	26.07.17	1	1	1	0	136	NBC/FM	Road
		Mai	123	234	Chuave HC	242	47	118	26.07.17	1	1	1	0	32	NBC/FM	Road
		Wawi	329	412	Chuave HC	290	44	141	26.07.17	1	1	1	0	30	NBC/FM	Road
5	AGUGU		<b>1,536</b>	<b>1,893</b>		<b>1,762</b>	<b>370</b>	<b>873</b>		<b>8</b>	<b>8</b>	<b>8</b>	<b>0</b>	<b>176</b>		
		Agugu Lait Haus	147	123	Chuave HC	95	18	52	26.07.17	1	1	1	0	3	NBC/FM	Road
		Mangikongo	75	295	Chuave HC	249	51	126	26.07.17	1	1	1	0	31	NBC/FM	Road
		Mikin	328	387	Chuave HC	307	65	150	26.07.17	1	1	1	0	48	NBC/FM	Road
		Guaka	406	456	Chuave HC	460	100	224	26.07.17	1	1	1	0	24	NBC/FM	Road
		Kumogawa	82	122	Chuave HC	126	29	63	26.07.17	1	1	1	0	7	NBC/FM	Road
		Daun Base	189	217	Chuave HC	182	49	90	26.07.17	1	1	1	0	35	NBC/FM	Road
		Kuiowo	230	201	Chuave HC	188	30	92	26.07.17	1	1	1	0	22	NBC/FM	Road
		Agugu Community School	79	92	Chuave HC	155	28	76	26.07.17	1	1	1	0	6	NBC/FM	Road
6	KAUTAMBANDI		<b>1,492</b>	<b>2,547</b>		<b>2,175</b>	<b>444</b>	<b>1,074</b>		<b>6</b>	<b>6</b>	<b>6</b>	<b>0</b>	<b>30</b>		
		Kautambandi	369	417	Chuave HC	366	77	181	26.07.17	1	1	1	0	0	NBC/FM	Road
		Kau	213	450	Chuave HC	513	94	256	26.07.17	1	1	1	0	5	NBC/FM	Road
		Yondumo	406	461	Chuave HC	441	96	216	26.07.17	1	1	1	0	8	NBC/FM	Road
		Mangiro	504	499	Chuave HC	392	87	190	26.07.17	1	1	1	0	0	NBC/FM	Road
		Woma		197	Chuave HC	182	36	92	26.07.17	1	1	1	0	3	NBC/FM	Road
		Kapma		523	Chuave HC	281	54	139	26.07.17	1	1	1	0	14	NBC/FM	Road
7	MAIMAGU		<b>1,139</b>	<b>1,026</b>		<b>738</b>	<b>164</b>	<b>359</b>		<b>3</b>	<b>3</b>	<b>3</b>	<b>0</b>	<b>15</b>		
		Maimagu	472	378	Chuave HC	302	71	147	26.07.17	1	1	1	0	5	NBC/FM	Road
		Kowimapnom	343	367	Chuave HC	222	50	108	26.07.17	1	1	1	0	1	NBC/FM	Road
		Kasuo	323	281	Chuave HC	214	43	104	26.07.17	1	1	1	0	9	NBC/FM	Road
8	GOI		<b>1,333</b>	<b>1,189</b>		<b>1,265</b>	<b>239</b>	<b>627</b>		<b>5</b>	<b>5</b>	<b>5</b>	<b>0</b>	<b>63</b>		
		Goi	398	326	Chuave HC	356	78	184	26.07.17	1	1	1	0	20	NBC/FM	Road
		Keikaima	166	227	Chuave HC	207	38	101	26.07.17	1	1	1	0	1	NBC/FM	Road
		Morei	287	231	Chuave HC	255	49	124	26.07.17	1	1	1	0	9	NBC/FM	Road
		Damei	311	218	Chuave HC	289	47	141	26.07.17	1	1	1	0	26	NBC/FM	Road
		Meko	170	187	Chuave HC	158	27	77	26.07.17	1	1	1	0	7	NBC/FM	Road
9	MAINAMO		<b>1,048</b>	<b>1,217</b>		<b>1,055</b>	<b>207</b>	<b>524</b>		<b>2</b>	<b>2</b>	<b>2</b>	<b>0</b>	<b>59</b>		
		Mainamo	550	402	Chuave HC	271	63	137	27.07.17	1	1	1	0	30	NBC/FM	Road
		Yom	498	814	Chuave HC	784	144	387	27.07.17	1	1	1	0	29	NBC/FM	Road
10	KEU No 1		<b>712</b>	<b>640</b>		<b>631</b>	<b>149</b>	<b>315</b>		<b>2</b>	<b>2</b>	<b>2</b>	<b>0</b>	<b>92</b>		
		Korowa	272	266	Chuave HC	247	50	125	26.07.17	1	1	1	0	33	NBC/FM	Road
		Keukopu	440	374	Chuave HC	384	99	190	26.07.17	1	1	1	0	59	NBC/FM	Road
11	KEU No 2		<b>1,177</b>	<b>1,550</b>		<b>1,351</b>	<b>254</b>	<b>669</b>		<b>3</b>	<b>3</b>	<b>3</b>	<b>0</b>	<b>180</b>		
		Keu A/P	226	393	Chuave HC	320	50	158	26.07.17	1	1	1	0	18	NBC/FM	Road
		Subaru	231	200	Chuave HC	138	33	67	26.07.17	1	1	1	0	30	NBC/FM	Road
		Seven Pawa	720	957	Chuave HC	893	171	444	26.07.17	1	1	1	0	132	NBC/FM	Road
12	ONOMA		<b>992</b>	<b>682</b>		<b>744</b>	<b>179</b>	<b>365</b>		<b>3</b>	<b>3</b>	<b>3</b>	<b>0</b>	<b>110</b>		
		Daima	528	300	Chuave HC	320	82	156	26.07.17	1	1	1	0	65	NBC/FM	Road
		Onoma	186	206	Chuave HC	218	50	107	26.07.17	1	1	1	0	14	NBC/FM	Road
		Danei	277	176	Chuave HC	206	47	102	26.07.17	1	1	1	0	31	NBC/FM	Road
13	EIGUN		<b>798</b>	<b>674</b>		<b>745</b>	<b>150</b>	<b>365</b>		<b>2</b>	<b>2</b>	<b>2</b>	<b>0</b>	<b>19</b>		
		Eigun	523	490	Chuave HC	494	100	242	26.07.17	1	1	1	0	6	NBC/FM	Road/Il Hr Trek
		Eikibi	274	184	Chuave HC	251	50	123	26.07.17	1	1	1	0	13	NBC/FM	Road/Il Hr Trek
14	CHUAVE URBAN		<b>618</b>	<b>1,215</b>		<b>1,827</b>	<b>254</b>	<b>885</b>		<b>4</b>	<b>4</b>	<b>4</b>	<b>0</b>	<b>44</b>		
		Okuk Highway	211	195	Chuave HC	470	49	230	26.07.17	1	1	1	0	11	NBC/FM	Road
		Wara Mai Road	140	171	Chuave HC	359	50	161	26.07.17	1	1	1	0	0	NBC/FM	Road
		Di Street Office - Health Centre	184	826	Chuave HC	748	114	372	26.07.17	1	1	1	0	26	NBC/FM	Road
		Chuavae High School	83	23	Chuave HC	250	41	122	26.07.17	1	1	1	0	7	NBC/FM	Road
				0						0						
<b>ELIMBARI RURAL</b>			<b>16,374</b>	<b>14,482</b>		<b>14,706</b>	<b>3,366</b>	<b>7,029</b>		<b>80</b>	<b>72</b>	<b>0</b>	<b>0</b>	<b>572</b>	<b>72</b>	
1	MONONO		<b>785</b>	<b>646</b>		<b>759</b>	<b>183</b>	<b>365</b>		<b>5</b>	<b>3</b>	<b>0</b>	<b>0</b>	<b>41</b>		
		Moi	271	264	Monono HC	332	74	162	27.07.17	1	1	0	0	14	KBM	Road

LLG	WARD	VILLAGE	Estimated 2017 Population Based On Census	Projected Population Based On 2014 Survey	Health Centre	Population Surveyed	House Holds Surveyed	Nets Issued	Date Of Distribution	Villages	Digicel	Bmobile	Citifon	Houses With Radios	Radio Networks	Comment
		Siriri	88	83	Monono HC	199	50	96	27.07.17	1	1	0	0	7	KBM	Road
		Geul	129	81	Monono HC					1						Included under Siriri
		Monono	111	98	Monono HC	228	59	107	27.07.17	1	1	0	0	20	KBM	Road
		Aregom	186	120	Monono HC					1						Included under Monono
2	GOGO	No 1	553	682		563	135	270		4	3	0	0	7		
		Daigol	112	213	Monono HC	163	41	79	27.07.17	1	1	0	0	2	KBM	Road
		Dai	180	144	Monono HC	282	62	134	27.07.17	1	1	0	0	5	KBM	Road
		Gogo	175	96	Monono HC					1						Included under Monono
		Borai	86	230	Monono HC	118	32	57	27.07.17	1	1	0	0	0	KBM	Road
3	GOGO	No 2	1,126	725		1,418	330	669		4	4	0	0	58		
		Kiruwar	518	284	Monono HC	683	150	325	27.07.17	1	1	0	0	23	KBM	Road
		Yopamani	220	21	Monono HC	284	50	119	27.07.17	1	1	0	0	6	KBM	Road
		Kapigom	124	30	Monono HC	114	30	57	27.07.17	1	1	0	0	0	KBM	Road
		Dirom Community Cntr	264	390	Monono HC	337	100	168	27.07.17	1	1	0	0	29	KBM	Road
4	KURAI	GURI	1,530	1,453		1,477	292	703		4	4	0	0	60		
		Manei	553	574	Monono HC	428	100	211	27.07.17	1	1	0	0	0	KBM	Road
		Baidigo	297	241	Monono HC	322	50	145	27.07.17	1	1	0	0	5	KBM	Road
		Bomai (Dumun)	355	255	Monono HC	222	48	108	27.07.17	1	1	0	0	47	KBM	Road
		Wiri Kewa	325	383	Monono HC	505	94	239	27.07.17	1	1	0	0	8	KBM	Road
5	KURERI	1	595	717		784	163	372		5	3	0	0	30		
		Kureri 1	66	253	Monono HC	175	40	80	27.07.17	1	1	0	0	16	KBM	Road
		Mareigugal	123	53	Monono HC	111	24	53	27.07.17	1	1	0	0	11	KBM	Road
		Wrabako	260	315	Monono HC	498	99	239	27.07.17	1	1	0	0	3	KBM	Road
		Beroma	124	18	Monono HC					1						Included under Mareigugal
		Beroma Primary School	22	78	Monono HC					1						Included under Mareigugal
6	KURERI	2	794	894		658	135	316		3	3	0	0	10		
		Banana Block	299	220	Monono HC	209	35	100	28.07.17	1	1	0	0	0	KBM	Road
		Kureri 2	198	274	Monono HC	247	50	119	28.07.17	1	1	0	0	2	KBM	Road
		Aurabol	297	400	Monono HC	202	50	97	28.07.17	1	1	0	0	8	KBM	Road
7	GIRIU	No 1	978	1,010		913	215	438		5	5	0	0	15		
		Kogol	202	181	Monono HC	184	37	89	28.07.17	1	1	0	0	7	KBM	Road
		Mugul	121	120	Monono HC	115	28	56	28.07.17	1	1	0	0	3	KBM	Road
		Miyare	200	187	Monono HC	204	50	98	28.07.17	1	1	0	0	0	KBM	Road
		Garden City	357	319	Monono HC	215	50	102	28.07.17	1	1	0	0	3	KBM	Road
		Onmai	97	202	Monono HC	195	50	93	28.07.17	1	1	0	0	2	KBM	Road
8	GIRIU	No 2	1,169	917		864	187	401		3	3	0	0	20		
		Giriu	221	153	Monono HC	202	50	92	28.07.17	1	1	0	0	5	KBM	Road
		Mai City	360	419	Monono HC	370	87	175	28.07.17	1	1	0	0	10	KBM	Road
		Gunsike	588	345	Monono HC	292	50	134	28.07.17	1	1	0	0	5	KBM	Road
9	WANGOI		1,470	859		902	184	432		7	7	0	0	21		
		Wangoi	214	228	Wangoi HC	148	27	69	28.07.17	1	1	0	0	0	KBM	
		Ganei (11)	262	202	Wangoi HC	125	25	58	28.07.17	1	1	0	0	1	KBM	
		Aurabol/Merei	371	178	Wangoi HC	184	16	88	30.07.17	1	1	0	0	0	KBM	
		Gamar(Yagari)	541	142	Wangoi HC	52	16	25	30.07.17	1	1	0	0	3	KBM	
		Wangoi Station	82	110	Wangoi HC	82	17	40	28.07.17	1	1	0	0	3	KBM	
		Kerasi/Durum		NEW	Wangoi HC	148	40	69	28.07.17	1	1	0	0	2	KBM	New Village
		Bariol		NEW	Wangoi HC	163	43	83	30.07.17	1	1	0	0	12	KBM	New Village
10	KORORUME	No.1	1,376	1,255		820	189	402		6	6	0	0	40		
		Korurume	268	139	Wangoi HC	187	40	92	28.07.17	1	1	0	0	0	KBM	
		Douneri/Mankor(11)	258	373	Wangoi HC	108	22	52	28.07.17	1	1	0	0	1	KBM	
		Kurumoi	354	381	Wangoi HC	195	49	97	28.07.17	1	1	0	0	13	KBM	
		Aivari (11)	168	54	Wangoi HC	21	5	10	28.07.17	1	1	0	0	0	KBM	
		Danei (11)	328	308	Wangoi HC	195	49	96	28.07.17	1	1	0	0	3	KBM	
		Guor/Tapairi		NEW	Wangoi HC	114	24	55	28.07.17	1	1	0	0	23	KBM	New Village
11	KURURUME		822	531		1,118	261	530		7	6	0	0	47		
		Norome	421	222	Wangoi HC	356	90	172	27.07.17	1	1	0	0	5	KBM	
		Degidegi(Marakirei (10)	137	156	Wangoi HC	191	46	87	27.07.17	1	1	0	0	26	KBM	
		Nourei (10)	264	152	Wangoi HC	219	44	99	27.07.17	1	1	0	0	3	KBM	
		Dirondi (Kamurom)		NEW	Wangoi HC	108	21	53	27.07.17	1	1	0	0	9	KBM	New Village
		Onmari		NEW	Wangoi HC					1						Included under Warfoko
		Warfoko		NEW	Wangoi HC	29	10	14	27.07.17	1	1	0	0	1	KBM	New Village
		Gaurei		NEW	Wangoi HC	215	50	105	27.07.17	1	1	0	0	3	KBM	New Village
12	YORORI		734	748		548	140	259		4	3	0	0	29		
		Yorori	286	300	Wangoi HC	219	50	103	28.07.17	1	1	0	0	11	KBM	
		Dame	55	103	Wangoi HC	145	40	66	28.07.17	1	1	0	0	10	KBM	
		Kuwe	305	159	Wangoi HC	184	50	90	28.07.17	1	1	0	0	8	KBM	
		Kuwe Aid Post	88	186	Wangoi HC					1						Included under Kuwe
13	PIMURI	No 2	1,228	810		1,135	277	537		8	7	0	0	37		
		Pimuri No.2	502	294	Wangoi HC					1						Included under Aromangi
		Kiruma (12)	283	188	Wangoi HC	89	25	43	28.07.17	1	1	0	0	4	FM/KBM	
		Namadir	175	173	Wangoi HC	158	39	73	27.07.17	1	1	0	0	5	FM/KBM	
		Gorokum/Enn	268	154	Wangoi HC	193	48	94	28.07.17	1	1	0	0	12	FM/KBM	
		Arnol (7 Days)		NEW	Wangoi HC	260	61	118	27.07.17	1	1	0	0	8	FM/KBM	New Village
		Irolmo		NEW	Wangoi HC	190	42	92	28.07.17	1	1	0	0	0	FM/KBM	New Village
		Mankou		NEW	Wangoi HC	82	19	39	28.07.17	1	1	0	0	0	FM/KBM	New Village
		Aromangi		NEW	Wangoi HC	163	43	78	28.07.17	1	1	0	0	8	FM/KBM	New Village
14	OROMA		774	940		810	200	396		5	5	0	0	20		
		Oroma No.1	484	454	Wangoi HC	195	50	97	27.07.17	1	1	0	0	6	FM/KBM	
		Pei (Megine) - (11)	290	485	Wangoi HC	200	42	92	27.07.17	1	1	0	0	0	FM/KBM	
		Damer		NEW	Wangoi HC	185	48	92	27.07.17	1	1	0	0	6	FM/KBM	New Village
		Aikop		NEW	Wangoi HC	190	50	96	27.07.17	1	1	0	0	7	FM/KBM	New Village
		Meroukopo		NEW	Wangoi HC	40	10	19	27.07.17	1	1	0	0	1	FM/KBM	New Village
15	KARAWERI	No 1	1,269	1,313		1,308	313	629		7	7	0	0	136		
		Kaki Beroma	324	398	Wangoi HC	180	46	90	27.07.17	1	1	0	0	0	FM/KBM	
		Wekomangi (16)	278	198	Wangoi HC	238	50	111	27.07.17	1	1	0	0	49	FM/KBM	
		Mokoma	375	274	Wangoi HC	128	37	62	27.07.17	1	1	0	0	15	FM/KBM	
		Morimabunom/Morimapnum	276	444	Wangoi HC	140	40	66	27.07.17	1	1	0	0	17	FM/KBM	

LLG	WARD	VILLAGE	Estimated 2017 Population Based On Census	Projected Population Based On 2014 Survey	Health Centre	Population Surveyed	House Holds Surveyed	Nets Issued	Date Of Distribution	Villages	Digicel	Bmobile	Citfon	Houses With Radios	Radio Networks	Comment
		Karaweri High School/ Karaweri Villag	15	0	Wangoi HC	227	50	111	27.07.17	1	1	0	0	12	FM/KBM	Covers H/School & Village
		Kiam		NEW	Wangoi HC	260	50	128	27.07.17	1	1	0	0	30	FM/KBM	New Village
		Siegom		NEW	Wangoi HC	135	40	61	27.07.17	1	1	0	0	13	FM/KBM	New Village
16	KARAWERI No 2		1,172	981		629	162	310		3	3	0	0	1		
		Kural	500	301	Wangoi HC	176	43	82	27.07.17	1	1	0	0	1	FM/KBM	
		Mankamunsuga/Kabuteine	559	606	Wangoi HC	269	72	139	27.07.17	1	1	0	0	0	FM/KBM	Is now known as Kabuteine
		Mumerendi (15)	112	75	Wangoi HC	184	47	89	27.07.17	1	1	0	0	0	FM/KBM	
				0												
<b>SIANE RURAL</b>			<b>14,376</b>	<b>14,258</b>		<b>16,109</b>	<b>3,966</b>	<b>7,562</b>		<b>99</b>	<b>88</b>	<b>0</b>	<b>0</b>	<b>675</b>	<b>89</b>	
1	KERERU		911	920		806	171	389		4	3	0	0	0		
		Suakul	429	451	Yandime HC	189	50	91	29.07.17	1	1	0	0	0	Radio EHP	Road
		Esrel	108	221	Yandime HC	278	40	133	29.07.17	1	1	0	0	0	Radio EHP	Road
		Aurabol	364	224	Yandime HC	339	81	165	29.07.17	1	1	0	0	0	Radio EHP	Road
		Sua Community School	10	23	Yandime HC					1						Included under Aurabol
2	WAISIME		997	803		778	182	373		3	3	0	0	0		
		Moimoi 2	310	196	Yandime HC	163	32	78	30.07.17	1	1	0	0	0	Radio EHP	Road/2 Hr Trek
		Almangi	391	386	Yandime HC	231	50	112	30.07.17	1	1	0	0	0	Radio EHP	Road/2 Hr Trek
		Korena	296	220	Yandime HC	384	100	183	30.07.17	1	1	0	0	0	Radio EHP	Road/2 Hr Trek
3	MOREVA No 1		332	266		433	99	209		3	3	0	0	0		
		Yuna	225	180	Yandime HC	171	43	82	30.07.17	1	1	0	0	0	Radio EHP	Road/2 Hr Trek
		Atino/yandime Community School	107	23	Yandime HC	116	26	56	30.07.17	1	1	0	0	0	Radio EHP	Road/2 Hr Trek
		Atano		63	Yandime HC	146	30	71	30.07.17	1	1	0	0	0	Radio EHP	Road/2 Hr Trek
4	MAREVA		586	522		632	154	304		4	4	0	0	0		
		Auwamo	120	105	Yandime HC	154	44	74	30.07.17	1	1	0	0	0	Radio EHP	Road
		Akefaro	203	152	Yandime HC	179	40	86	30.07.17	1	1	0	0	0	Radio EHP	Road
		Wingu. 2	172	171	Yandime HC	148	35	72	30.07.17	1	1	0	0	0	Radio EHP	Road
		Komongu	91	93	Yandime HC	151	35	72	30.07.17	1	1	0	0	0	Radio EHP	Road
5	NIME		670	654		598	146	288		4	4	0	0	0		
		Kiyono	253	185	Yandime HC	150	33	72	30.07.17	1	1	0	0	0	Radio EHP	Road
		Mi'i-Kunai	160	161	Yandime HC	169	36	81	30.07.17	1	1	0	0	0	Radio EHP	3Hr Trek
		Wingu. 1	216	176	Yandime HC	168	50	82	30.07.17	1	1	0	0	0	Radio EHP	Road
		Nime	42	132	Yandime HC	111	27	53	30.07.17	1	1	0	0	0	Radio EHP	Road
6	FOKOWE		673	606		575	137	278		4	4	0	0	0		
		Kitiro	278	214	Yandime HC	60	13	29	30.07.17	1	1	0	0	0	Radio EHP	2Hr Trek
		Kurunga	281	121	Yandime HC	210	50	101	30.07.17	1	1	0	0	0	Radio EHP	2Hr Trek
		Mi'i	114	139	Yandime HC	181	41	87	30.07.17	1	1	0	0	0	Radio EHP	2Hr Trek
		Fokowe (Inclusive)		131	Yandime HC	124	33	61	30.07.17	1	1	0	0	0	Radio EHP	2Hr Trek
7	KUMO		331	439		599	150	264		3	3	0	0	22		
		Waiya	135	99	Movi HC	205	50	90	28.07.17	1	1	0	0	9	FM/NBC	Road
		New Block	129	170	Movi HC	196	50	87	28.07.17	1	1	0	0	8	FM/NBC	Road
		Kamaliro	66	169	Movi HC	198	50	87	28.07.17	1	1	0	0	5	FM/NBC	Road
8	ATINO		405	253		593	150	264		4	3	0	0	31		
		Nambaiyufa	98	107	Movi HC	160	50	75	28.07.17	1	1	0	0	10	FM/NBC	Road/30 mins trek from Waya
		Korou	77	0	Movi HC					1						Non Existant
		Nambyia	120	123	Movi HC	217	50	94	28.07.17	1	1	0	0	9	FM/NBC	Road/30 mins trek from Waya
		Nambaiyufa Community School	110	22	Movi HC	216	50	95	28.07.17	1	1	0	0	12	FM/NBC	Road/30 mins trek from Waya
9	IRAFAIUFA		587	831		866	205	401		4	3	0	0	50		
		Runugu	397	525	Movi HC	302	55	140	28.07.17	1	1	0	0	2	FM/NBC	Road
		Waikunai	154	159	Movi HC					1						Non Existant
		Wararam		NEW	Movi HC	347	100	162	27.07.17	1	1	0	0	44	FM/NBC	
		Koripama/Keto	36	148	Movi HC	217	50	99	28.07.17	1	1	0	0	4	FM/NBC	Road
10	KOMUNI No 1		567	701		731	181	332		4	3	0	0	94		
		Ipaku	176	242	Movi HC	312	75	139	27.07.17	1	1	0	0	61	FM/NBC	Road
		Karand/Nami	78	123	Movi HC					1						Non Existant
		Lilikapu	232	177	Movi HC	270	56	122	27.07.17	1	1	0	0	15	FM/NBC	Road
		Afename	80	160	Movi HC	149	50	71	27.07.17	1	1	0	0	18	FM/NBC	Road
11	FAMUNDI		728	717		881	234	387		6	6	0	0	105		
		Kiruwari	184	137	Movi HC	122	27	55	26.07.17	1	1	0	0	13	FM/NBC	Road
		Negemo	166	103	Movi HC	94	24	41	26.07.17	1	1	0	0	3	FM/NBC	Road
		Kauwero/Munga	82	161	Movi HC	177	50	77	26.07.17	1	1	0	0	1	FM/NBC	Road
		Noinora	66	66	Movi HC	163	57	71	26.07.17	1	1	0	0	33	FM/NBC	Road
		Inamona	56	113	Movi HC	122	33	51	26.07.17	1	1	0	0	12	FM/NBC	Road
		Kumendo	174	137	Movi HC	203	43	92	27.07.17	1	1	0	0	43	FM/NBC	Road
12	SEINE		1,147	1,196		1,439	380	645		11	9	0	0	143		
		Movi	174	170	Movi HC	160	50	76	26.07.17	1	1	0	0	4	FM/NBC	Road
		Munga	75	90	Movi HC	142	41	62	26.07.17	1	1	0	0	18	FM/NBC	Road
		Kilaminga	65	98	Movi HC	225	50	100	26.07.17	1	1	0	0	32	FM/NBC	Road
		Oru	135	131	Movi HC	189	50	81	26.07.17	1	1	0	0	15	FM/NBC	Road
		Landoua	171	114	Movi HC	180	45	78	26.07.17	1	1	0	0	36	FM/NBC	Road
		New Camp Sda	157	65	Movi HC	126	32	55	26.07.22	1	1	0	0	18	FM/NBC	Road
		Kainari/Famato	106	155	Movi HC	189	50	84	27.07.17	1	1	0	0	20	FM/NBC	Road
		Fanaroto	98	123	Movi HC					1						Included under Koifagu
		Yafano	45	81	Movi HC					1						Non Existant
		Kerori	103	85	Movi HC	100	25	44	26.07.17	1	1	0	0	0	FM/NBC	Road
		Koifafu	18	83	Movi HC	128	37	65	26.07.17	1	1	0	0	0	FM/NBC	Road
13	RABIUFA		563	696		1,082	268	505		7	7	0	0	37		
		Rumo	111	110	Movi HC	178	50	83	26.07.17	1	1	0	0	0	FM/NBC	Road
		Kaso	79	120	Movi HC	196	50	92	26.07.17	1	1	0	0	0	FM/NBC	Road
		Madairo	110	125	Movi HC	199	50	90	26.07.17	1	1	0	0	15	FM/NBC	Road
		Honowagi		NEW	Movi HC	226	50	106	26.07.17	1	1	0	0	10	FM/NBC	New village/road trek
		Rumaro	152	144	Movi HC	198	48	93	26.07.17	1	1	0	0	7	FM/NBC	2Hr Trek
		Movi H/C	71	142	Movi HC	30	9	14	26.07.17	1	1	0	0	1	FM/NBC	Road
		Movi Community School	40	56	Movi HC	55	11	27	26.07.17	1	1	0	0	4	FM/NBC	Road

LLG	WARD	VILLAGE	Estimated 2017 Population Based On Census	Projected Population Based On 2014 Survey	Health Centre	Population Surveyed	House Holds Surveyed	Nets Issued	Date Of Distribution	Villages	Digicel	Bmobile	Citifon	Houses With Radios	Radio Networks	Comment
14	RUMBUIUFA		673	685		896	224	398		6	5	0	0	41	FM/NBC	
		Fomo	126	106	Movi HC	132	32	58	26.07.17	1	1	0	0	5	FM/NBC	Road
		Tiribuka	125	104	Movi HC					1						Non Existant
		Hap Wara		NEW	Movi HC	174	42	78	26.07.17	1	1	0	0	0	FM/NBC	New village/road trek
		Makema	167	213	Movi HC	166	50	73	26.07.17	1	1	0	0	4	FM/NBC	Road
		Fuka	191	123	Movi HC	217	50	97	26.07.17	1	1	0	0	21	FM/NBC	Road
		Rota Kona	63	138	Movi HC	207	50	92	26.07.17	1	1	0	0	11	FM/NBC	Road
15	ANDOMONO		565	562		631	165	318		3	3	0	0	0		
		Kafarega	154	255	Keveru HC	167	50	83	24.07.17	1	1	0	0		KBK	Road
		Pila	152	149	Keveru HC	302	68	153	24.07.17	1	1	0	0		KBK	Road
		Kombafairo	259	158	Keveru HC	162	47	82	24.07.17	1	1	0	0		KBK	Road
16	FERAMENA		467	317		277	75	138		3	2	0	0	0		
		Ofuna	203	160	Keveru HC	194	49	96	24.07.17	1	1	0	0		KBK	Road
		Likene	112	122	Keveru HC	83	26	42	24.07.17	1	1	0	0		KBK	2Hr Trek
		Keberu	152	35	Keveru HC					1		0				Included under Likene
17	WAFU		452	386		562	119	269		2	2	0	0	0		
		Kirau	278	260	Keveru HC	386	78	183	24.07.17	1	1	0	0		KBK	Road
		Morendo	174	127	Keveru HC	176	41	86	24.07.17	1	1	0	0		KBK	1.5Hr Trek
18	LOFAIFO		328	674		557	117	278		3	3	0	0	11		
		Yombairaro	188	244	Keveru HC	270	50	138	24.07.17	1	1	0	0	11	KBK	Road
		Muniyau	82	97	Keveru HC	191	50	94	24.07.17	1	1	0	0	0	KBK	Road
		New Block	59	333	Keveru HC	96	17	46	24.07.17	1	1	0	0		KBK	Road
19	LOANDI		629	543		502	139	251		4	3	0	0	12		
		Lende	304	239	Keveru HC	212	50	103	24.07.17	1	1	0	0	10	KBK	Road/ 1 Hr Trek
		Monega	143	110	Keveru HC	131	39	66	24.07.17	1	1	0	0	1	KBK	Road/ 1 Hr Trek
		Fikombaro	138	132	Keveru HC	159	50	82	24.07.17	1	1	0	0	1	KBK	Road/ 1 Hr Trek
		Fikombaro Community School	45	62	Keveru HC					1						Included under Fikombaro
20	NOMANENA		294	232		241	63	119		2	2	0	0	9		
		Mainero	174	123	Keveru HC	130	37	64	24.07.17	1	1	0	0	4	KBK	Road
		Blue Sky	120	109	Keveru HC	111	26	55	25.07.17	1	1	0	0	5	KBK	Road
21	KEMAMI		291	258		245	69	136		2	2	0	0	6		
		Akoriro	152	115	Keveru HC	72	19	38	20.07.17	1	1	0	0	2	KBK	3Hr Trek
		Laiya 1	139	143	Keveru HC	173	50	98	20.07.17	1	1	0	0	4	KBK	3Hr Trek
22	NOMANE		228	241		170	50	81		2	1	0	0	7		
		Laiya 2	212	125	Keveru HC	170	50	81	20.07.17	1	1	0	0	7	KBK	3Hr Trek
		Nora	17	116	Keveru HC					1						Included under Laiya 2
23	NORIFO		362	275		316	82	157		2	2	0	0	18		
		Karune	208	181	Keveru HC	197	50	97	25.07.17	1	1	0	0	13	KBK	Road
		Kurumbukotaru	154	94	Keveru HC	119	32	60	25.07.17	1	1	0	0	5	KBK	1Hr Trek
24	KOMBORUFA		477	479		752	183	354		3	3	0	0	35		
		Omo	175	170	Keveru HC	427	98	200	25.07.17	1	1	0	0	22	KBK	Road
		Hutumoi	185	197	Keveru HC	164	43	77	25.07.17	1	1	0	0	5	KBK	Road
		Ufarutaku/Korome	117	112	Keveru HC	161	42	77	25.07.17	1	1	0	0	8	KBK	2Hr Trek
25	FOINAWA		355	481		468	115	208		2	2	0	0	32		
		Kimo	355	481	Movi HC	369	95	164	28.07.17	1	1	0	0	30	FM/NBC	Road
		Foina		NEW	Movi HC	99	20	44	28.07.17	1	1	0	0	2	FM/NBC	
26	KOMUNI No 2		408	243		283	58	128		2	2	0	0	18		
		Ipato	209	88	Movi HC	117	20	53	28.07.17	1	1	0	0	14	FM/NBC	Road
		Urito	199	154	Movi HC	166	38	75	28.07.17	1	1	0	0	4	FM/NBC	Road
27	KIFIUFA		350	280		196	50	88	0	2	1	0	0	4		
		Opairo	218	176	Movi HC	196	50	88	28.07.17	1	1	0	0	4	FM/NBC	3Hr Trek
		Monega	131	104	Movi HC					1						Non Existant

**ANNEX TWO**

**CHIMBU PROVINCE  
KARIMI NOMANE DISTRICT POPULATION 2017  
LLIN DISTRIBUTION SUMMARY SHEET**

Growth Factor Used

LLG	WARD	VILLAGE	Estimated 2017 Population Based On Census	Projected Population Based On 2014 Survey	Health Centre	Population Surveyed	House Holds Surveyed	Nets Issued	Date Of Distribution	Villages	Digicel	Bmbole	Citifon	Houses With Radios	Radio Networks	Comment
<b>KARIMUI \ NOMANE</b>			<b>54,499</b>	<b>54,499</b>		<b>30,018</b>	<b>4,902</b>	<b>14,430</b>		<b>96</b>	<b>62</b>	<b>0</b>	<b>0</b>	<b>219</b>	<b>55</b>	
<b>KARIMUI RU \ 29,075</b>			<b>25,295</b>	<b>29,075</b>		<b>30,018</b>	<b>4,902</b>	<b>14,430</b>		<b>96</b>	<b>62</b>	<b>0</b>	<b>0</b>	<b>219</b>	<b>55</b>	
1	YURO 1		<b>2,005</b>	<b>2,279</b>		<b>2,321</b>	<b>377</b>	<b>1,086</b>		<b>3</b>	<b>3</b>	<b>0</b>	<b>0</b>	<b>13</b>		
		Naiyo 2 (Yuro)	822	932	Sigamuru HC	900	139	423	16.07.17	1	1	0	0			3 Hr Trek
		Naiyo 1	385	377	Sigamuru HC	371	59	177	16.07.17	1	1	0	0			3 Hr Trek
		Yawiyo	798	970	Sigamuru HC	1,050	179	486	16.07.17	1	1	0	0	13		3 Hr Trek
2	YURO 2		<b>1,195</b>	<b>1,549</b>		<b>1,685</b>	<b>247</b>	<b>761</b>		<b>3</b>	<b>3</b>	<b>0</b>	<b>0</b>	<b>0</b>		
		Sogo 2	379	610	Sigamuru HC	445	56	197	16.07.17	1	1	0	0			3 Hr Trek
		Moiyo	357	569	Sigamuru HC	615	100	285	16.07.17	1	1	0	0			3 Hr Trek
		Hoiyayo	459	369	Sigamuru HC	625	91	279	16.07.17	1	1	0	0	0		3 Hr Trek
3	HUWAIYO		<b>1,065</b>	<b>1,155</b>		<b>1,318</b>	<b>219</b>	<b>618</b>		<b>2</b>	<b>0</b>	<b>0</b>	<b>0</b>	<b>0</b>		
		Waiyo	502	510	Sigamuru HC	607	98	290	14.07.17	1	0	0	0			2.5 Hr Trek
		Wenaiyo	562	645	Sigamuru HC	711	121	328	14.07.17	1	0	0	0			2.5 Hr Trek
4	WARIO		<b>1,474</b>	<b>1,755</b>		<b>1,900</b>	<b>324</b>	<b>896</b>		<b>6</b>	<b>0</b>	<b>0</b>	<b>0</b>	<b>22</b>		
		Kiasivi (Wario)	292	135	Sigamuru HC	544	85	242	14.07.17	1	0	0	0			10mins Walk from HC
		Sebelisivi	385	426	Sigamuru HC	445	65	213	14.07.17	1	0	0	0			1 Hr Walk from HC
		Sororasivi	372	228	Sigamuru HC	513	93	249	14.07.17	1	0	0	0			20 Min Walk from HC
		Magiagi Block	280	352	Sigamuru HC	241	50	117	13.07.17	1	0	0	0			20mins walk from HC
		Kerepa Community School	51	82	Sigamuru HC	157	31	75	13.07.17	1	0	0	0	22		5mins walk from HC
		Sigamaru H/Cen	93	532	Sigamuru HC					1						Included under Kerepa
5	KARIMUI STATION 1		<b>835</b>	<b>1,046</b>		<b>1,249</b>	<b>225</b>	<b>601</b>		<b>3</b>	<b>0</b>	<b>0</b>	<b>0</b>	<b>11</b>		
		Meiyo	400	301	Sigamuru HC	508	100	242	14.07.17	1	0	0	0	10		20 Min Walk
		Solida	169	510	Sigamuru HC	266	50	130	14.07.17	1	0	0	0	1		20 Min Walk
		Karimui Station	265	235	Sigamuru HC	475	75	229	14.07.17	1	0	0	0	0		20 Min Walk
6	KARIMUI STATION 2		<b>1,362</b>	<b>1,606</b>		<b>1,600</b>	<b>243</b>	<b>769</b>		<b>5</b>	<b>0</b>	<b>0</b>	<b>0</b>	<b>13</b>		
		Peria (Karimui)	235	568	Sigamuru HC	369	49	180	14.07.17	1	0	0	0	3		1.5 Hr Trek
		Wegisivi	283	134	Sigamuru HC	304	50	151	14.07.17	1	0	0	0			30 Min Walk
		Orokamaru	130	152	Sigamuru HC	171	29	80	14.07.17	1	0	0	0	10	BC/Radio lig	30 Min Walk
		Tobaiyakoma	355	464	Sigamuru HC	273	43	127	14.07.17	1	0	0	0	0	BC/Radio lig	30 Min Walk
		Kagosili	357	287	Sigamuru HC	483	72	231	14.07.17	1	0	0	0	0	BC/Radio lig	30 Min Walk
7	NOROWAI		<b>741</b>	<b>923</b>		<b>915</b>	<b>152</b>	<b>438</b>		<b>3</b>	<b>0</b>	<b>0</b>	<b>0</b>	<b>17</b>		
		Noruai	228	368	Sigamuru HC	272	52	130	14.07.17	1	0	0	0	7		45 Min Walk
		Kiribari	285	275	Sigamuru HC	325	50	157	14.07.17	1	0	0	0	3		45 Min Walk
		Kurube	228	280	Sigamuru HC	318	50	151	14.07.17	1	0	0	0	7		45 Min Walk
8	BOISAMARU 1		<b>973</b>	<b>1,184</b>		<b>1,072</b>	<b>189</b>	<b>526</b>		<b>5</b>	<b>0</b>	<b>0</b>	<b>0</b>	<b>4</b>		
		Boisamaru	207	352	Sigamuru HC	235	38	119	14.07.17	1	0	0	0	4		2.5 Hr Trek
		Kepanisivi	169	216	Sigamuru HC					1	0	0	0			Included under Boisamaru Com School
		Walaisivi	195	154	Sigamuru HC	325	66	166	14.07.17	1	0	0	0	0		2.5 Hr Trek
		Tiosibi	394	200	Sigamuru HC	193	35	94	14.07.17	1	0	0	0			2.5 Hr Trek
		Boisamaru Community School	7	261	Sigamuru HC	319	50	147	14.07.17	1	0	0	0	0		2.5 Hr Trek
9	BOISAMARU 2		<b>444</b>	<b>642</b>		<b>664</b>	<b>110</b>	<b>325</b>		<b>1</b>	<b>0</b>	<b>0</b>	<b>0</b>	<b>0</b>		
		Soboro	444	642	Sigamuru HC	664	110	325	14.07.17	1	0	0	0	0		3 Hr Trek
10	YOGOROMARU		<b>918</b>	<b>1,212</b>		<b>1,268</b>	<b>204</b>	<b>636</b>		<b>5</b>	<b>5</b>	<b>0</b>	<b>0</b>	<b>24</b>		
		Yogoromaru	369	574	Negabo HC	361	66	181	12.07.17	1	1	0	0	5	R.Light	Local
		Asanugai	49	254	Negabo HC	415	50	208	12.07.17	1	1	0	0	4	R.Light	Local
		Todayia	307	142	Negabo HC	305	49	153	12.07.17	1	1	0	0	1	R.Light	Local
		Bunibiri	148	213	Negabo HC	147	31	74	12.07.17	1	1	0	0	7	R.Light	Local
		Yogoromaru Community School	43	30	Negabo HC	40	8	20	12.07.17	1	1	0	0	7	R.Light	Local
11	DIBE 1		<b>664</b>	<b>908</b>		<b>975</b>	<b>115</b>	<b>488</b>		<b>3</b>	<b>3</b>	<b>0</b>	<b>0</b>	<b>30</b>		
		Dibe	258	425	Negabo HC	633	76	317	11.07.17	1	1	0	0	29	R.Light	
		Sogo 1	166	241	Negabo HC	236	24	118	12.07.17	1	1	0	0	0	R.Light	Under Ward 12
		Irage	240	243	Negabo HC	106	15	53	11.07.17	1	1	0	0	1	R.Light	
12	DIBE 2		<b>435</b>	<b>368</b>		<b>418</b>	<b>48</b>	<b>209</b>		<b>1</b>	<b>1</b>	<b>0</b>	<b>0</b>	<b>33</b>		
		Sogo 2	435	368	Negabo HC	418	48	209	12.07.17	1	1	0	0	33	R.Light	
13	NEGABO		<b>1,227</b>	<b>1,369</b>		<b>1,381</b>	<b>270</b>	<b>692</b>		<b>5</b>	<b>5</b>	<b>0</b>	<b>0</b>	<b>40</b>		
		Negabo	439	386	Negabo HC	415	82	208	12.07.17	1	1	0	0	16	R.Light	
		Yogobo 1&2	237	349	Negabo HC	261	54	131	12.07.17	1	1	0	0	8	R.Light	
		Beiye	327	382	Negabo HC	425	80	213	12.07.17	1	1	0	0	15	R.Light	
		Tomobisibi	204	114	Negabo HC	160	25	80	12.07.17	1	1	0	0	1	R.Light	
		Negabo H/Cen	19	137	Negabo HC	120	29	60	12.07.17	1	1	0	0	0	R.Light	
14	TUA 1		<b>409</b>	<b>456</b>		<b>456</b>	<b>72</b>	<b>229</b>		<b>1</b>	<b>1</b>	<b>0</b>	<b>0</b>	<b>0</b>		
		Tua	409	456	Negabo HC	456	72	229	12.07.17	1	1	0	0	0	R.Light	
15	TUA 2 ( TILIGE )		<b>994</b>	<b>1,059</b>		<b>1,014</b>	<b>125</b>	<b>508</b>		<b>2</b>	<b>2</b>	<b>0</b>	<b>0</b>	<b>0</b>		
		Tilige	549	550	Negabo HC	506	66	254	12.07.17	1	1	0	0	0	R.Light	
		Bobo	445	509	Negabo HC	508	59	254	12.07.17	1	1	0	0	0	R.Light	
16	MASI		<b>1,054</b>	<b>909</b>		<b>1,055</b>	<b>175</b>	<b>528</b>		<b>4</b>	<b>4</b>	<b>0</b>	<b>0</b>	<b>10</b>		
		Maina	469	525	Negabo HC	314	62	157	12.07.17	1	1	0	0	6	R.Light	
		Walaisivi	168	144	Negabo HC	250	33	125	12.07.17	1	1	0	0	0	R.Light	
		Okanoma	417	241	Negabo HC	242	41	121	12.07.17	1	1	0	0	0	R.Light	
		Haseka		NEW	Negabo HC	249	39	125	12.07.17	1	1	0	0	4	R.Light	
17	MAINA 1		<b>814</b>	<b>1,109</b>		<b>777</b>	<b>140</b>	<b>390</b>		<b>4</b>	<b>4</b>	<b>0</b>	<b>0</b>	<b>0</b>		
		Masi	295	435	Negabo HC	326	61	164	12.07.17	1	1	0	0	0	R.Light	
		Saiya	184	131	Negabo HC	268	45	134	12.07.17	1	1	0	0	0	R.Light	
		Anobai	141	291	Negabo HC	114	22	57	12.07.17	1	1	0	0	0	R.Light	
		Noruasivi	193	252	Negabo HC	69	12	35	12.07.17	1	1	0	0	0	R.Light	
18	MAINA 2		<b>681</b>	<b>459</b>		<b>476</b>	<b>80</b>	<b>238</b>		<b>1</b>	<b>1</b>	<b>0</b>	<b>0</b>	<b>1</b>		
		Hoyaisivi	681	459	Negabo HC	476	80	238	13.07.17	1	1	0	0	1	R.Light	
19	SOLARI ( NORU )		<b>1,486</b>	<b>1,587</b>		<b>1,369</b>	<b>186</b>	<b>686</b>		<b>4</b>	<b>4</b>	<b>0</b>	<b>0</b>	<b>1</b>		
		Tomobirisibi	298	771	Negabo HC	523	58	262	11.07.17	1	1	0	0	0	R.Light	
		Eleiname	327	0	Negabo HC	276	42	138	12.07.17	1	1	0				

LLG	WARD	VILLAGE	Estimated 2017 Population Based On Census	Projected Population Based On 2014 Survey	Health Centre	Population Surveyed	House Holds Surveyed	Nets Issued	Date Of Distribution	Villages	Digicel	Bmobile	Citifon	Houses With Radios	Radio Networks	Comment
20	SOLA		424	542		514	100	257		2	2	0	0	0		
		Sorolai	184	262	Negabo HC	234	50	117	12.07.17	1	1	0	0	0	R.Light	
		Tagaro	240	280	Negabo HC	280	50	140	12.07.17	1	1	0	0	0	R.Light	
21	WAIAMANI ( DOBU )		591	1,313		1,079	156	541		4	4	0	0	0		
		Kalabai	214	377	Negabo HC	478	63	240	12.07.17	1	1	0	0	0	R.Light	
		Yamane	168	324	Negabo HC	320	50	160	12.07.17	1	1	0	0	0	R.Light	Under Ward 22
		Wegiro	208	294	Negabo HC	157	25	79	12.07.17	1	1	0	0	0	R.Light	
		Kewasiki	319	319	Negabo HC	124	18	62	12.07.17	1	1	0	0	0	R.Light	
22	DOBEA		643	381		458	76	229		3	3	0	0	0		
		Dobu	223	90	Negabo HC	200	30	100	12.07.17	1	1	0	0	0		
		Bunubiri	178	291	Negabo HC	136	24	68	12.07.17	1	1	0	0	0	R.Light	
		Gomia	241	0	Negabo HC	122	22	61	12.07.17	1	1	0	0	0	R.Light	
		HOBE (New Ward)		503		551	86	276		2	2	0	0	0		
		Nabi		227	Negabo HC	276	50	138	13.07.17	1	1	0	0	0	R.Light	Under Ward 18
		Sau		277	Negabo HC	275	36	138	13.07.17	1	1	0	0	0	R.Light	Under Ward 18
23	OROTABI (BOMAI )		729	642		715	144	349		3	3	0	0	0		
		Alobiri	109	133	Bomai HC	138	26	70	10.07.17	1	1	0	0	0	NBC, R. Ligt	1 hr Trek from HC
		Bomai Station	450	354	Bomai HC	451	100	217	11.07.17	1	1	0	0	0	NBC, R. Ligt	Surrounding
		Naizimi	169	154	Bomai HC	126	18	62	Held in Trust	1	1	0	0	0	NBC, R. Ligt	1 Day Trek
24	UNANE		466	470		638	140	275		2	2	0	0	0		
		Unane	324	278	Bomai HC	448	97	192	Held in Trust	1	1	0	0	0	NBC, R. Ligt	30 mins. Walk from Hc
		Weiyoy	142	193	Bomai HC	190	43	83	Held in Trust	1	1	0	0	0	NBC, R. Ligt	35 mins. Walk from Hc
25	SURUKA ( KAPI )		670	824		987	183	408		3	3	0	0	0		
		Kapi	306	373	Bomai HC	481	95	189	15.07.17	1	1	0	0	0	NBC, R. Ligt	4 Hrs Trek from HC
		Suruka	183	215	Bomai HC	231	38	111	16.07.17	1	1	0	0	0	NBC, R. Ligt	2 Hrs. 30 mins. Trek from Hc
		Sagain	181	236	Bomai HC	275	50	108	17.07.17	1	1	0	0	0	NBC, R. Ligt	2 Hrs. 30 mins. Trek from Hc
26	HAIA		1,435	1,078		1,231	211	568		4	4	0	0	0		
		Talabakul	483	234	Bomai HC	309	50	145	16.07.17	1	1	0	0	0	NBC, R. Ligt	5 Hrs. 30 mins. Trek from Hc
		Dibesibi	487	195	Bomai HC	292	52	142	16.07.17	1	1	0	0	0	NBC, R. Ligt	5 Hrs. 45 mins. Trek from Hc
		Husukai	190	228	Bomai HC	224	35	96	17.07.17	1	1	0	0	0	NBC, R. Ligt	5 Hrs. 50 mins. Trek from Hc
		Sanibiri	274	421	Bomai HC	406	74	185	17.07.17	1	1	0	0	0	NBC, R. Ligt	6 Hrs. Trek from Hc
27	SOLIABETO		1,554	1,749		1,932	305	903		12	3	0	0	0		
		Haia	456	607	Haia HC	336	51	157	14.07.17	1	1	0	0	0		
		Soliabeto	292	252	Haia HC	231	41	100	16.07.17	1	0	0	0	0		
		Wezena	351	270	Haia HC	293	45	156	16.07.17	1	0	0	0	0		
		Jou	259	155	Haia HC	123	23	68	14.07.17	1	1	0	0	0		
		Yene	180	0	Haia HC	285	44	116	14.07.17	1	1	0	0	0		
		Haia Community School	15	14	Haia HC					1						Included under Haia
		Japramaru	0	156	Haia HC	106	22	50	16.07.17	1	0	0	0	0		
		Punjano	0	0	Haia HC					1						Same village as Wezena
		Toiyari	0	294	Haia HC	302	44	137	16.07.17	1	0	0	0	0		
		Uheino	0	0	Haia HC	125	17	56	16.07.17	1	0	0	0	0		
		Joalailo	0	0	Haia HC					1						
		Soma		NEW	Haia HC	131	18	63	16.07.17	1	0	0	0	0		New Village
<b>NOMANE RURAL</b>			<b>10,060</b>	<b>10,289</b>		<b>0</b>	<b>0</b>	<b>0</b>			<b>0</b>	<b>0</b>	<b>0</b>	<b>0</b>		
1	DEKAMANE		1,137	1,155		NOT DONE DUE TO NO ACCESS THROUGH GUMINE										
		Dikamane	364	398	Nomane HC											Nomane HC
		Nobu	541	588	Nomane HC											Road
		Nokul	231	169	Nomane HC											Road
2	AUMA		807	694												
		Auma	382	313	Nomane HC											Road
		Kurigaba	199	227	Nomane HC											Road
		Borol	225	154	Nomane HC											Road
3	GAIMO		621	589												
		Gaimahou	258	210	Nomane HC											Road
		Wairiba	210	218	Nomane HC											Road
		Nomane Luth Mission	39	161	Nomane HC											Road
		Nomane Hlth Cntr	81	0	Nomane HC											Road
		Nomane Primary School	33	0	Nomane HC											Road
4	KOLU		1,137	1,340												
		Nirmil	139	180	Nomane HC											Road
		Borowal	144	219	Nomane HC											Road
		Beetle Creek	219	234	Nomane HC											Road
		Obi (Goyaku)	304	333	Nomane HC											Road
		New Block	217	179	Nomane HC											Road
		Haral	112	195	Nomane HC											Road
5	ORU		1,029	956												
		Habai Bolan	466	187	Nomane HC											Road
		Habaihou	145	243	Nomane HC											Road
		Holu	271	307	Nomane HC											Road
		Mai	145	219	Nomane HC											Road
6	MONOWARI		718	682												
		Kempton	234	187	Nomane HC											Road
		Monowari	349	363	Nomane HC											Road
		Yowai	135	132	Nomane HC											Road
7	KORA		783	483												
		Gola	402	230	Nomane HC											Road/1 Hr Trek
		Gomla	103	0	Nomane HC											Road/1 Hr Trek
		Nam	271	253	Nomane HC											Road/1 Hr Trek
		Yowai Community School	6	0	Nomane HC											Road/1 Hr Trek
8	DAMA		370	353												
		Gerema	370	353	Nomane HC											2 Hr Trek
9	HOPUM		421	415												
		Homane Ounum	199	111	Nomane HC											2 Hr Trek
		Obum	222	304	Nomane HC											2 Hr Trek
10	YUWAI		312	573												
		Mariox	136	270	Nomane HC											Road
		Yuwai	175	302	Nomane HC											Road

LLG	WARD	VILLAGE	Estimated 2017 Population Based On Census	Projected Population Based On 2014 Survey	Health Centre	Population Surveyed	House Holds Surveyed	Nets Issued	Date Of Distribution	Villages	Digicel	Bmobile	Citifon	Houses With Radios	Radio Networks	Comment	
11	APURI		837	906													
		Kabre	402	415	Nomane HC											Road	
		Wahongo	153	217	Nomane HC											Road	
		Waula	282	274	Nomane HC											Road	
12	KUKAMA		564	704													
		Kiari Community School	18	0	Nomane HC											Road	
		Kunol	229	230	Nomane HC											Road	
		Mau	142	260	Nomane HC											Road	
		Yunoho	174	214	Nomane HC											Road	
13	KALEM		1,323	1,440													
		Kukuma	277	436	Nomane HC											Road / 1 Hr Trek	
		Muragoi	301	214	Nomane HC											Road / 1 Hr Trek	
		Aburi	289	222	Nomane HC											Road / 1 Hr Trek	
		Muneri	304	154	Nomane HC											Road / 1 Hr Trek	
		Las Wara	97	413	Nomane HC											Road / 1 Hr Trek	
		Owaiho	52	0	Nomane HC											Road / 1 Hr Trek	
<b>SALT RURAL</b>			<b>19,144</b>	<b>15,135</b>		<b>0</b>	<b>0</b>	<b>0</b>			<b>0</b>	<b>0</b>	<b>0</b>	<b>0</b>			
1	BANEWERA		1,167	730		<b>NOT DONE DUE TO NO ACCESS THROUGH GUMINE</b>											
		Ameri	265	191	Kilau HC												Road
		Baniwera	295	198	Kilau HC												Road
		Hanbai (Mangi)	606	342	Kilau HC												Road
2	SUA		2,622	1,664													
		Yobaboli	489	247	Kilau HC												Road
		Suabegil	289	387	Kilau HC												Road
		Deri/Sua	483	473	Kilau HC												Road
		Mirima	913	322	Kilau HC												Road
		Bosla	447	234	Kilau HC												Road
3	DIRIMA		1,150	1,449													
		Aregigi	198	85	Kilau HC												Road
		Dirima 2	531	618	Kilau HC												Road
		Doliba High School	13	368	Kilau HC												Road
		Moma	408	377	Kilau HC												Road
4	DIANI		858	606													
		Diani	424	396	Kilau HC												Road
		Yobai	433	210	Kilau HC												Road
5	GOROBA		459	429													
		Baibai	187	202	Kilau HC												Road
		Goroba	271	227	Kilau HC												Road
6	AINABANE		790	822													
		Bogahulalua	357	399	Kilau HC												Road
		Hamanedimane	433	423	Kilau HC												Road
7	PERUI		589	435													
		Ainabane	129	99	Kilau HC												Road
		Perui	460	336	Kilau HC												Road
8	YOPAKENI		817	193													
		Gomiri	817	193	Kilau HC												Road
9	YOPAERI		1,383	818													
		Oinima	541	208	Kilau HC												Road
		Simniril	537	426	Kilau HC												Road
		Yobaeri	304	185	Kilau HC												Road
10	MOGIAGI		363	374													
		Kenamaina (Kul)	127	195	Kilau HC												Trek
		Minaguri	235	179	Kilau HC												Trek
11	MORINIL \ KORI		543	573													
		Brokul	192	231	Kilau HC												Road / 1 Hr Trek
		Morikama	103	136	Kilau HC												Road / 1 Hr Trek
		Morinil Kol	247	205	Kilau HC												Road / 1 Hr Trek
12	YOPAKUL		172	370													
		Munikobale	82	164	Kilau HC												Road / 1 Hr Trek
		Yopakul	90	206	Kilau HC												Road / 1 Hr Trek
13	WAIDO		574	520													
		Yobabolisi (Mini)	219	262	Kilau HC												Road
		Yolawaido	355	259	Kilau HC												Road
14	TAPAEKUL		478	374													
		Nimegula	205	146	Kilau HC												Road
		Tabaikul	273	228	Kilau HC												Road
15	KOBIE BALAMIL		358	448													
		Koblobalanil	358	448	Kilau HC												Road
16	TAPAI		1,068	975													
		Gigebemalgi	124	73	Kilau HC												Road
		Tabai (Molalva)	196	209	Kilau HC												Road
		Humbaba	207	246	Kilau HC												Road
		Beregule	235	208	Kilau HC												Road
		Kabnibani	304	239	Kilau HC												Road
17	YURIBOL		837	677													
		Yuribol	379	350	Kilau HC												Road
		Saina/Town Gan	387	251	Kilau HC												Road
		Kilau Station	70	76	Kilau HC												Road
18	MIRIMA		607	390													
		Erema	364	194	Kilau HC												Road
		Moma (Mirima)	243	196	Kilau HC												Road
19	BORI		562	203													
		Bori/Pulma	234	153	Kilau HC												Road
		Bri/Yorihul	328	50	Kilau HC												Road
20	MULUGRA		352	445													
		Ninere	256	0	Kilau HC												Road
		Murugra	96	445	Kilau HC												Road
21	MANKON		610	510													

LLG	WARD	VILLAGE	Estimated 2017 Population Based On Census	Projected Population Based On 2014 Survey	Health Centre	Population Surveyed	House Holds Surveyed	Nets Issued	Date Of Distribution	Villages	Digicel	Bmobile	Citifon	Houses With Radios	Radio Networks	Comment
		Mankon	369	298	Kilau HC											Road
		Dulai	241	212	Kilau HC											Road
22	KAMA		<b>1,417</b>	<b>1,049</b>												
		Olwi	735	743	Kilau HC											Road
		Kama	682	307	Kilau HC											Road
23	GAIMA		<b>1,362</b>	<b>1,082</b>												
		Gaima Dawa	507	531	Kilau HC											Road
		Mainkuri	855	551	Kilau HC											Road

## ANNEX THREE

CHIMBU PROVINCE  
KEROWAGI DISTRICT POPULATION 2017  
LLIN DISTRIBUTION SUMMARY SHEET

LLG	WARD	VILLAGE	Estimated 2017 Population Based On Census	Projected Population Based On 2014 Survey	Health Centre	Population Surveyed	House Holds Surveyed	Nets Issued	Date Of Distribution	Villages	Digicel	Bmobile	Citifon	Houses With Radios	Radio Networks	Comment
<b>KEROWAGI</b>			<b>83,448</b>	<b>83,448</b>		<b>95,265</b>	<b>17,050</b>	<b>45,462</b>		<b>210</b>	<b>194</b>	<b>117</b>	<b>0</b>	<b>4,774</b>	<b>209</b>	
<b>GENA \ WAUGLA RURAL</b>			<b>24,038</b>	<b>25,306</b>		<b>29,525</b>	<b>5,563</b>	<b>14,350</b>		<b>82</b>	<b>68</b>	<b>68</b>	<b>0</b>	<b>774</b>	<b>82</b>	
1	NOGAR		<b>972</b>	<b>901</b>		<b>1,198</b>	<b>220</b>	<b>592</b>		<b>4</b>	<b>0</b>	<b>0</b>	<b>0</b>	<b>120</b>		
		Nogar	131	277	Nogar HC	190	34	94	24.08.17	1	0	0	0	8	Fm/Am	Road
		Kamanigle	275	209	Nogar HC	512	100	253	24.08.17	1	0	0	0	49	Fm/Am	Road
		Talange	313	220	Nogar HC	202	37	101	24.08.17	1	0	0	0	14	Fm/Am	Road
		Ira	253	196	Nogar HC	294	49	144	24.08.17	1	0	0	0	49	Fm/Am	Road
2	MUKUNA		<b>604</b>	<b>651</b>		<b>654</b>	<b>144</b>	<b>340</b>		<b>4</b>	<b>0</b>	<b>0</b>	<b>0</b>	<b>28</b>		
		Welakumar	172	104	Nogar HC	85	14	46	24.08.17	1	0	0	0	5	Fm/Am	Road/1 Hr Trek
		Mukana	176	196	Nogar HC	167	50	90	24.08.17	1	0	0	0	0	Fm/Am	Road/1 Hr Trek
		Baglkagl	138	249	Nogar HC	246	50	126	22.08.17	1	0	0	0	17	Fm/Am	Road/1 Hr Trek
		Waglia	117	102	Nogar HC	156	30	78	24.08.17	1	0	0	0	6	Fm/Am	Road/1 Hr Trek
3	BOMBIR		<b>923</b>	<b>485</b>		<b>922</b>	<b>169</b>	<b>466</b>		<b>3</b>	<b>0</b>	<b>0</b>	<b>0</b>	<b>85</b>		
		Bombir	297	247	Nogar HC	531	88	253	22.08.17	1	0	0	0	40	Fm/Am	Road/1 Hr Trek
		Noglai Nigle	294	85	Nogar HC	208	49	122	22.08.17	1	0	0	0	45	Fm/Am	Road/1 Hr Trek
		Kura Olto	333	153	Nogar HC	183	32	91	22.08.17	1	0	0	0	0	Fm/Am	Road/1 Hr Trek
4	KENDINE		<b>2,264</b>	<b>2,039</b>		<b>2,275</b>	<b>471</b>	<b>1,106</b>		<b>8</b>	<b>5</b>	<b>5</b>	<b>0</b>	<b>94</b>		
		Kendine	205	268	Kendine HC	266	49	130	21.08.17	1	1	1	0	15	Fm/Am	Road
		Kamataru	135	85	Nogar HC	166	35	82	24.08.17	1	0	0	0	17	Fm/Am	Road
		Binagl	473	565	Kendine HC	337	77	167	21.08.17	1	1	1	0	10	Fm/Am	Road
		Sie Mogl	639	482	Kendine HC	667	150	322	21.08.17	1	1	1	0	16	Fm/Am	Road
		Bogl Nigle	126	70	Nogar HC	107	17	51	24.08.17	1	0	0	0	4	Fm/Am	Road
		Dan Nigle	307	212	Nogar HC	305	64	161	24.08.17	1	0	0	0	23	Fm/Am	Road
		Burba	205	133	Kendine HC	252	50	122	20.08.17	1	1	1	0	4	Fm/Am	Road
		Kendine H/C	172	224	Kendine HC	175	29	71	21.08.17	1	1	1	0	5	Fm/Am	Road
5	KAMBANG		<b>1,258</b>	<b>1,239</b>		<b>1,291</b>	<b>251</b>	<b>633</b>		<b>4</b>	<b>4</b>	<b>4</b>	<b>0</b>	<b>75</b>		
		Kambage	332	226	Kendine HC	402	79	197	22.08.17	1	1	1	0	23	Fm/Am	Road
		Bagle	271	242	Kendine HC	252	49	122	23.08.17	1	1	1	0	19	Fm/Am	Road
		Ganbugl	633	722	Kendine HC	607	113	300	22.08.17	1	1	1	0	27	Fm/Am	Road
		Bagle C/S	23	50	Kendine HC	30	10	14	23.08.17	1	1	1	0	6	Fm/Am	Road
6	SIM		<b>2,314</b>	<b>2,401</b>		<b>2,389</b>	<b>466</b>	<b>1,165</b>		<b>5</b>	<b>5</b>	<b>5</b>	<b>0</b>	<b>58</b>		
		Sim	178	303	Kendine HC	208	50	100	22.08.17	1	1	1	0	14	Fm/Am	Road
		Urmand	248	78	Kendine HC	123	27	60	22.08.17	1	1	1	0	6	Fm/Am	Road
		Gagl	385	478	Kendine HC	410	97	200	23.08.17	1	1	1	0	0	Fm/Am	Survey books not Collected
		Uka	925	883	Kendine HC	753	149	367	22.08.17	1	1	1	0	13	Fm/Am	Road
		Siur	578	659	Kendine HC	895	143	438	23.08.17	1	1	1	0	25	Fm/Am	Road
7	DIMBIN YAUNDO		<b>3,163</b>	<b>3,802</b>		<b>3,859</b>	<b>712</b>	<b>1,854</b>		<b>8</b>	<b>8</b>	<b>8</b>	<b>0</b>	<b>0</b>		
		Dibindiyaudo	625	708	Mingende H	699	144	331	23.08.17	1	1	1	0	0	Radio Chin	Road
		Kurumbayu	510	623	Mingende H	410	65	197	23.08.17	1	1	1	0	0	Radio Chin	Road
		Kaman	233	285	Mingende H	354	68	173	22.08.17	1	1	1	0	0	Radio Chin	Road
		Yaglmugl	496	518	Mingende H	578	105	280	23.08.17	1	1	1	0	0	Radio Chin	Road
		Yagle	330	345	Mingende H	334	57	160	21.08.17	1	1	1	0	0	Radio Chin	Road
		Karmel	219	246	Mingende H	246	49	118	21.08.17	1	1	1	0	0	Radio Chin	Road
		Diugl	421	393	Mingende H	650	124	313	23.08.17	1	1	1	0	0	Radio Chin	Road
		Gever Kurba	329	684	Mingende H	588	100	282	23.08.17	1	1	1	0	0	Radio Chin	Road
8	DUGLGAMBUGL		<b>2,477</b>	<b>4,115</b>		<b>3,720</b>	<b>710</b>	<b>1,797</b>		<b>10</b>	<b>10</b>	<b>10</b>	<b>0</b>	<b>0</b>		
		Duglgambagl	342	622	Mingende H	524	104	251	23.08.17	1	1	1	0	0	Radio Chin	Road
		Kenigle	245	344	Mingende H	456	96	225	23.08.17	1	1	1	0	0	Radio Chin	Road
		Kuth	382	475	Mingende H	483	95	230	23.08.17	1	1	1	0	0	Radio Chin	Road
		Kumbu	246	241	Mingende H	370	60	180	23.08.17	1	1	1	0	0	Radio Chin	Road
		Yurnigle	371	567	Mingende H	319	69	153	23.08.17	1	1	1	0	0	Radio Chin	Road
		Gaglmambo	421	489	Mingende H	714	139	343	23.08.17	1	1	1	0	0	Radio Chin	Road
		Kanguma	33	260	Mingende H	42	9	21	23.08.17	1	1	1	0	0	Radio Chin	Road
		Kolmane	138	680	Mingende H	185	43	90	23.08.17	1	1	1	0	0	Radio Chin	Road
		Mingende C/S	128	164	Mingende H	315	46	151	22.08.17	1	1	1	0	0	Radio Chin	Road
		Mingende C/Msn	169	275	Mingende H	312	49	153	22.08.17	1	1	1	0	0	Radio Chin	Road
9	KUNBI		<b>2,743</b>	<b>2,554</b>		<b>3,550</b>	<b>665</b>	<b>1,702</b>		<b>10</b>	<b>10</b>	<b>10</b>	<b>0</b>	<b>0</b>		
		Kunbi	382	303	Mingende H	419	94	203	23.08.17	1	1	1	0	0	Radio Chin	Road / 1 Hr Trek
		Koronigle	210	329	Mingende H	360	50	173	23.08.17	1	1	1	0	0	Radio Chin	Road / 1 Hr Trek
		Kagima	347	250	Mingende H	371	62	175	21.08.17	1	1	1	0	0	Radio Chin	Road / 1 Hr Trek
		Komugl	110	288	Mingende H	180	40	86	23.08.17	1	1	1	0	0	Radio Chin	Road / 1 Hr Trek
		Yume	37	147	Mingende H	100	27	48	23.08.17	1	1	1	0	0	Radio Chin	Road / 1 Hr Trek
		Waiyaundo	163	165	Mingende H	296	50	142	23.08.17	1	1	1	0	0	Radio Chin	Road / 1 Hr Trek
		Dimbi	496	289	Mingende H	429	95	206	23.08.17	1	1	1	0	0	Radio Chin	Road / 1 Hr Trek
		Kombuglomogo	368	209	Mingende H	550	92	264	23.08.17	1	1	1	0	0	Radio Chin	Road / 1 Hr Trek
		Kuthigle	126	340	Mingende H	545	100	261	23.08.17	1	1	1	0	0	Radio Chin	Road / 1 Hr Trek
		Kuimar	505	234	Mingende H	300	55	144	23.08.17	1	1	1	0	0	Radio Chin	Road / 1 Hr Trek
10	KOMBUKU		<b>3,230</b>	<b>2,489</b>		<b>4,418</b>	<b>851</b>	<b>2,140</b>		<b>9</b>	<b>9</b>	<b>9</b>	<b>0</b>	<b>143</b>		
		Baglepera	589	294	Mingende H	545	100	262	22.08.17	1	1	1	0	0	Radio Chin	Road
		Waingar	517	772	Mingende H	441	102	218	22.08.17	1	1	1	0	0	Radio Chin	Road
		Tawikalage	327	289	Mingende H	440	100	215	22.08.17	1	1	1	0	22	Radio Chin	Road
		Mandaisuglo	616	276	Mingende H	739	135	357	22.08.17	1	1	1	0	15	Radio Chin	Road
		Gingiu	435	284	Mingende H	482	100	235	22.08.17	1	1	1	0	23	Radio Chin	Road
		Mingainuglo	309	277	Mingende H	351	75	169	22.08.17	1	1	1	0	8	Radio Chin	Road
		Simgau C/S	307	46	Mingende H	698	127	333	22.08.17	1	1	1	0	43	Radio Chin	Road
		Kondi H/S	129	252	Mingende H	228	39	109	22.08.17	1	1	1	0	6	Radio Chin	Road
		Kondi		NEW	Mingende H	494	73	242	22.08.17	1	1	1	0	26	Radio Chin	Road
11	SIAMBUGLA WAUGKU		<b>1,438</b>	<b>1,544</b>		<b>1,379</b>	<b>242</b>	<b>679</b>		<b>7</b>	<b>7</b>	<b>7</b>	<b>0</b>	<b>80</b>		
		Mondadrugl	429	494	Kendine HC	506	85	244	19.08.17	1	1	1	0	19	Fm/Am	Road / 3 Hr Trek
		Parmugl	103	137	Kendine HC	132	23	64	27.08.17	1	1	1	0	5	Fm/Am	Road / 3 Hr Trek

LLG	WARD	VILLAGE	Estimated 2017 Population Based On Census	Projected Population Based On 2014 Survey	Health Centre	Population Surveyed	House Holds Surveyed	Nets Issued	Date Of Distribution	Villages	Digicel	Bmoble	Citifon	Houses With Radios	Radio Networks	Comment	
		Dirkule	170	105	Kendine HC	112	20	54	27.08.17	1	1	1	0	5	Fm/Am	Road / 3 Hr Trek	
		Gugurua	93	324	Kendine HC	33	6	26	27.08.17	1	1	1	0	0	Fm/Am	Road / 3 Hr Trek	
		Yoglogaima	237	149	Kendine HC	292	50	143	27.08.17	1	1	1	0	49	Fm/Am	Road / 3 Hr Trek	
		Metne	88	93	Kendine HC	94	16	46	27.08.17	1	1	1	0	1	Fm/Am	Road / 3 Hr Trek	
		Tauyadumo	316	243	Kendine HC	210	42	102	27.08.17	1	1	1	0	1	Fm/Am	Road / 3 Hr Trek	
12	SIAMBUGLA	WAWUKU	1,126	1,457		2,098	315	1,025		6	6	6	0	65			
		Engre	141	118	Kendine HC	432	50	213	27.08.17	1	1	1	0	16	Fm/Am	Road / 3 Hr Trek	
		Konbi	326	436	Kendine HC	504	91	248	19.08.17	1	1	1	0	6	Fm/Am	Road / 3 Hr Trek	
		Miane	110	285	Kendine HC	402	50	196	27.08.17	1	1	1	0	13	Fm/Am	Road / 3 Hr Trek	
		Caglbuna	167	189	Kendine HC	159	30	77	19.08.17	1	1	1	0	4	Fm/Am	Road / 3 Hr Trek	
		Murbo	251	197	Kendine HC	201	44	98	27.08.17	1	1	1	0	10	Fm/Am	Road / 3 Hr Trek	
		Dirrigle	131	231	Kendine HC	400	50	193	27.08.17	1	1	1	0	16	Fm/Am	Road / 3 Hr Trek	
13	GENA	YOGOMBO	1,526	1,626		1,772	347	851		4	4	4	0	26			
		Kambu	895	776	Kendine HC	1,082	192	517	22.08.17	1	1	1	0	19	Fm/Am	Road / 2 Hr Trek	
		Singe	224	106	Kendine HC	207	50	97	22.08.17	1	1	1	0	2	Fm/Am	Road / 2 Hr Trek	
		Tamugl	335	490	Kendine HC	319	69	158	22.08.17	1	1	1	0	0	Fm/Am	Road / 2 Hr Trek	
		Aglaur	73	254	Kendine HC	164	36	79	22.08.17	1	1	1	0	5	Fm/Am	Road / 2 Hr Trek	
			0	0						0							
<b>KEROWAGI RURAL</b>			<b>40,496</b>	<b>39,129</b>		<b>50,188</b>	<b>8,733</b>	<b>23,677</b>		<b>102</b>	<b>101</b>	<b>49</b>	<b>0</b>	<b>3838</b>	<b>102</b>		
1	DAGE	MITNA	1,202	1,750		3,128	558	1,476		4	4	0	0	248			
		Demange 1	383	398	Demange HC	1,367	253	655	03.08.17	1	1	0	0	149	Eagle FM/93 FM	Road	
		Demange 2	494	766	Demange HC	1,056	179	490	03.08.17	1	1	0	0	51	Eagle FM/93 FM	Road	
		Gambuglge	324	353	Demange HC	168	35	79	03.08.17	1	1	0	0	2	Eagle FM/93 FM	Road	
		Ganigle Laswara		232	Demange HC	537	91	252	03.08.17	1	1	0	0	46	Eagle FM/93 FM	Road	
2	DAGE	MINTA 1	1,464	1,177		1,338	224	595		4	4	0	0	70			
		Denge	306	396	Demange HC	336	65	159	03.08.17	1	1	0	0	0	Eagle FM/93 FM	Road	
		Du	412	153	Demange HC	233	40	112	03.08.17	1	1	0	0	8	Eagle FM/93 FM	Road	
		Boi	694	396	Demange HC	628	89	291	03.08.17	1	1	0	0	32	Eagle FM/93 FM	Road	
		Denge Community School	52	232	Demange HC	141	30	33	03.08.17	1	1	0	0	30	Eagle FM/93 FM	Road	
3	DAGE	MITNA 2	1,520	1,517		2,015	406	950		4	4	0	0	99			
		Niglgogl	332	194	Demange HC	453	97	211	03.08.17	1	1	0	0	14	Eagle FM/93 FM	Road	
		Kewamugl	606	712	Demange HC	840	172	396	03.08.17	1	1	0	0	23	Eagle FM/93 FM	Road	
		Kugayam	397	410	Demange HC	530	97	249	03.08.17	1	1	0	0	27	Eagle FM/93 FM	Road	
		Mondia	186	201	Demange HC	192	40	94	03.08.17	1	1	0	0	35	Eagle FM/93 FM	Road	
4	DAGE	YOGOMBO 1	2,839	2,380		4,723	723	2,254		5	5	0	0	0			
		Kuglgonange	858	1,391	Miunde HC	2,127	291	993	03.08.17	1	1	0	0	0	0		Road
		Kombuglo	720	288	Miunde HC	650	100	301	ks yt to colle	1	1	0	0	0	0	0	Road
		Moroma Sda Msn	867	320	Miunde HC	449	85	210	03.08.17	1	1	0	0	0	0	0	Road
		Yomba Community School	394	380	Miunde HC	541	98	301	03.08.17	1	1	0	0	0	0	0	Road
		Niglgogl			Miunde HC	956	149	449	05.08.17	1	1	0	0	0	0	0	Initially under Kup HC
5	DAGE	YOGOMBO 2	1,651	2,550		2,441	452	1,142		3	3	0	0	0			
		Moroma 2	403	332	Miunde HC	294	50	140	06.08.17	1	1	0	0	0	0	0	Road
		Miunde	788	1,872	Miunde HC	1,897	352	886	05.08.17	1	1	0	0	0	0	0	Road
		Miunde Community School	459	346	Miunde HC	250	50	116	05.08.17	1	1	0	0	0	0	0	Road
6	KAMAN	EKU	2,620	2,543		2,428	450	1,154		6	6	6	0	354			
		Siure	208	172	Kerowagi HC	241	42	113	04.08.17	1	1	1	0	42	C/ Radio Sir	Road	
		Pukar	764	524	Kerowagi HC	559	97	267	04.08.17	1	1	1	0	93	C/ Radio Sir	Road	
		Kangri Range	858	1,180	Kerowagi HC	1,142	230	545	04.08.17	1	1	1	0	181	C/ Radio Sir	Road	
		Amdi	435	426	Kerowagi HC	285	44	133	06.08.17	1	1	1	0	1	C/ Radio Sir	Road	
		Gu	336	241	Kerowagi HC	183	31	87	04.08.17	1	1	1	0	31	C/ Radio Sir	Road	
		Siure Cath/Mission	18	0	Kerowagi HC	18	6	9	04.08.17	1	1	1	0	6	C/ Radio Sir	Road	
7	SILKU		2,557	2,375		2,549	512	1,221		5	5	5	0	353			
		Tauglpene	475	583	Kerowagi HC	660	124	319	05.08.17	1	1	1	0	100	C/ Radio Sir	Road	
		Kurumugl 1	281	412	Kerowagi HC	339	82	162	05.08.17	1	1	1	0	42	C/ Radio Sir	Road	
		Goglime	701	461	Kerowagi HC	552	121	263	05.08.17	1	1	1	0	74	C/ Radio Sir	Road	
		Singembuno	571	231	Kerowagi HC	341	50	163	05.08.17	1	1	1	0	50	C/ Radio Sir	Road	
		Patna	529	688	Kerowagi HC	657	135	314	05.08.17	1	1	1	0	87	C/ Radio Sir	Road	
8	KAMEN	EKU 2	904	1,805		1,912	321	915		4	4	4	0	252			
		Kurumugl 2	394	251	Kerowagi HC	164	26	78	07.08.17	1	1	1	0	3	C/ Radio Sir	Road	
		Don Bosco InStreet	30	436	Kerowagi HC	834	150	399	05.08.17	1	1	1	0	114	C/ Radio Sir	Road	
		Cis Barawagi	449	579	Kerowagi HC	222	45	106	05.08.17	1	1	1	0	45	C/ Radio Sir	Road	
		Pwd Compound	30	539	Kerowagi HC	692	100	332	05.08.17	1	1	1	0	90	C/ Radio Sir	Road	
9	PAGAU	1	2,504	1,269		1,172	228	554		6	6	6	0	152			
		Dawagle (Endeyaundo)	216	227	Kerowagi HC	285	50	136	04.08.17	1	1	1	0	23	C/ Radio Sir	Road	
		Nek	1,267	90	Kerowagi HC	219	42	105	06.08.17	1	1	1	0	19	C/ Radio Sir	Road	
		Tamboboglkwa	67	54	Kerowagi HC	107	16	51	05.08.17	1	1	1	0	13	C/ Radio Sir	Road	
		Kaulan/Mogma	172	230	Kerowagi HC	91	18	43	04.08.17	1	1	1	0	14	C/ Radio Sir	Road	
		Dambuna	548	336	Kerowagi HC	284	52	135	05.08.17	1	1	1	0	52	C/ Radio Sir	Road	
		Nombuna	234	331	Kerowagi HC	186	50	84	05.08.17	1	1	1	0	31	C/ Radio Sir	Road	
10	PAGAU	2	1,937	2,092		2,043	478	983		6	6	6	0	1019			
		Bunamugl	367	477	Kerowagi HC	499	100	238	05.08.17	1	1	1	0	97	C/ Radio Sir	Road	
		Omugl	695	756	Kerowagi HC	708	137	339	04.08.17	1	1	1	0	706	C/ Radio Sir	Road	
		Perumyaundo	289	457	Kerowagi HC	297	61	142	05.08.17	1	1	1	0	60	C/ Radio Sir	Road	
		Dawage (Poglko)	341	262	Kerowagi HC	280	100	140	04.08.17	1	1	1	0	87	C/ Radio Sir	Road	
		Tambunoyaundo	128	56	Kerowagi HC	129	43	62	05.08.17	1	1	1	0	43	C/ Radio Sir	Road	
		Bii/Ombrumugl	117	85	Kerowagi HC	130	37	62	05.08.17	1	1	1	0	26	C/ Radio Sir	Road	
11	PAGAU	SIBAIGU	1,529	941		1,385	275	660		5	5	5	0	121			
		Kondan	277	0	Kerowagi HC	281	44	134	03.08.17	1	1	1	0	2	C/ Radio Sir	Road	

LLG	WARD	VILLAGE	Estimated Population Based On Census	Projected Population Based On 2014 Survey	Health Centre	Population Surveyed	House Holds Surveyed	Nets Issued	Date Of Distribution	Villages	Digicel	Bmobile	Citifon	Houses With Radios	Radio Networks	Comment		
		Daruage	215	105	Kerowagi HC	133	26	63	05.08.17	1	1	1	0	26	C/ Radio Sir	Road		
		Kombuglkande	504	540	Kerowagi HC	489	97	234	04.08.17	1	1	1	0	25	C/ Radio Sir	Road		
		Tembai	253	296	Kerowagi HC	270	58	128	05.08.17	1	1	1	0	55	C/ Radio Sir	Road		
		Kurumbamambuno	281	0	Kerowagi HC	212	50	101	03.08.17	1	1	1	0	13	C/ Radio Sir	Road		
12	PAGAU 3		<b>1,721</b>	<b>1,479</b>		<b>2,130</b>	<b>362</b>	<b>1,016</b>		<b>5</b>	<b>5</b>	<b>5</b>	<b>0</b>	<b>184</b>				
		Nombuna	636	551	Kerowagi HC	621	100	297	04.08.17	1	1	1	0	63	C/ Radio Sir	Road		
		Orua 1	155	369	Kerowagi HC	600	82	284	06.08.17	1	1	1	0	82	C/ Radio Sir	Road		
		Orua 2	341	559	Kerowagi HC	518	100	248	06.08.17	1	1	1	0	12	C/ Radio Sir	Road		
		Kiglandie	52	0	Kerowagi HC	47	13	22	05.08.17	1	1	1	0	13	C/ Radio Sir	Road		
		Wagir	537	0	Kerowagi HC	344	67	165	03.08.17	1	1	1	0	14	C/ Radio Sir	Road		
13	PAGAU 4		<b>660</b>	<b>1,349</b>		<b>1,600</b>	<b>252</b>	<b>742</b>		<b>3</b>	<b>3</b>	<b>0</b>	<b>0</b>	<b>68</b>				
		Angagoi	224	403	Bogo HC	669	78	309	01.08.17	1	1	0	0	23	C/ Radio Sir	Road		
		Gagan	88	498	Bogo HC	463	82	207	01.08.17	1	1	0	0	30	C/ Radio Sir	Road		
		Angagoi Community School	348	447	Bogo HC	468	92	226	01.08.17	1	1	0	0	15	C/ Radio Sir	Road		
14	GRAIGU 1		<b>502</b>	<b>572</b>		<b>548</b>	<b>80</b>	<b>255</b>		<b>3</b>	<b>3</b>	<b>0</b>	<b>0</b>	<b>5</b>				
		Bogo	450	360	Bogo HC	387	50	179	03.08.17	1	1	0	0	4	C/Radio Sir	Road		
		Bogo Community School	9	212	Bogo HC	96	17	44	03.08.17	1	1	0	0	1	C/Radio Sir	Road		
		Bogo H/C	43	0	Bogo HC	65	13	32	03.08.17	1	1	0	0	0	C/Radio Sir	Road		
15	GRAIGU 2		<b>1,537</b>	<b>861</b>		<b>1,320</b>	<b>167</b>	<b>620</b>		<b>4</b>	<b>4</b>	<b>0</b>	<b>0</b>	<b>38</b>				
		Agumbanigle	493	247	Bogo HC	516	50	247	03.08.17	1	1	0	0	17	C/Radio Sir	Road		
		Meke	784	254	Bogo HC	381	47	183	01.08.17	1	1	0	0	2	C/Radio Sir	Road		
		Ganigle Bridge		NEW	Bogo HC	166	20	76	03.08.17	1	1	0	0	15	C/Radio Simbu			
		Bimambuno	260	360	Bogo HC	257	50	114	01.08.17	1	1	0	0	4	C/Radio Sir	Road		
16	BINDEKU		<b>1,178</b>	<b>816</b>		<b>1,056</b>	<b>162</b>	<b>486</b>		<b>4</b>	<b>3</b>	<b>0</b>	<b>0</b>	<b>35</b>				
		Kawa	787	550	Bogo HC	547	92	250	01.08.17	1	1	0	0	22	C/Radio Sir	Road		
		Eiomba		NEW	Bogo HC	375	50	172	01.08.17	1	1	0	0	13	C/Radio Simbu			
		Dinageyaugl	251	0	Bogo HC					1						Non Existant		
		Kuglbo - Eli	140	266	Bogo HC	134	20	64	01.08.17	1	1	0	0	0	C/Radio Sir	Road		
17	DAMBA		<b>2,891</b>	<b>2,302</b>		<b>5,196</b>	<b>782</b>	<b>2,429</b>		<b>8</b>	<b>8</b>	<b>0</b>	<b>0</b>	<b>0</b>				
		Elu	348	183	Miunde HC	605	100	284	04.08.17	1	1	0	0	0	0		Road / 1 Hr Trek	
		Elu Minta	421	250	Miunde HC	315	50	148	04.08.17	1	1	0	0	0	0	0		Road / 1 Hr Trek
		Kuglbagl 1	726	310	Miunde HC	526	99	246	04.08.17	1	1	0	0	0	0	0		Road / 1 Hr Trek
		Wambur	280	263	Miunde HC	710	99	333	04.08.17	1	1	0	0	0	0	0		Road / 1 Hr Trek
		Bundun	502	474	Miunde HC	628	91	292	04.08.17	1	1	0	0	0	0	0		Road / 1 Hr Trek
		Kurakan	370	229	Miunde HC	438	50	201	05.08.17	1	1	0	0	0	0	0		Road / 1 Hr Trek
		Kuglbagl	243	287	Miunde HC	1,279	194	599	04.08.17	1	1	0	0	0	0	0		Road / 1 Hr Trek
		Tambaran Block		307	Miunde HC	695	99	326	05.08.17	1	1	0	0	0	0	0		Road / 1 Hr Trek
18	NIMAIKANE		<b>2,913</b>	<b>926</b>		<b>1,623</b>	<b>314</b>	<b>761</b>		<b>3</b>	<b>3</b>	<b>0</b>	<b>0</b>	<b>0</b>				
		Gogomugl 1	1,511	380	Miunde HC	438	98	206	04.08.17	1	1	0	0	0	0		Road	
		Ganige 2	549	284	Miunde HC	785	149	367	04.08.17	1	1	0	0	0	0		Road	
		Gogomugl 2	853	262	Miunde HC	400	67	188	04.08.17	1	1	0	0	0	0		Road	
19	DAGE YOGOMBE 3		<b>2,001</b>	<b>2,236</b>		<b>2,896</b>	<b>481</b>	<b>1,338</b>		<b>5</b>	<b>5</b>	<b>0</b>	<b>0</b>	<b>0</b>				
		Awage	604	243	Miunde HC	196	35	90	03.08.17	1	1	0	0	0	0		Road	
		New Camp	181	0	Miunde HC	259	49	119	03.08.17	1	1	0	0	0	0		Road	
		Kuragl	418	255	Miunde HC	380	47	179	03.08.17	1	1	0	0	0	0	0		Road
		Didim	501	1,002	Miunde HC	1,121	200	522	04.08.17	1	1	0	0	0	0		Road	
		Ganigle 1	297	737	Miunde HC	940	150	428	05.08.17	1	1	0	0	0	0		Road	
20	DAGE MITNA 3		<b>955</b>	<b>1,097</b>		<b>1,386</b>	<b>188</b>	<b>637</b>		<b>3</b>	<b>3</b>	<b>0</b>	<b>0</b>	<b>85</b>				
		Duakonange	624	585	Demange HC	947	113	431	03.08.17	1	1	0	0	32	Eagle FM/93 FM	Road		
		Parmauglo	175	215	Demange HC	292	50	137	03.08.17	1	1	0	0	42	Eagle FM/93 FM	Road		
		Kogonwage	157	297	Demange HC	147	25	69	03.08.17	1	1	0	0	11	Eagle FM/93 FM	Road		
21	KAMANEKU \ SIAMBULA		<b>3,613</b>	<b>4,261</b>		<b>4,665</b>	<b>918</b>	<b>2,227</b>		<b>6</b>	<b>6</b>	<b>6</b>	<b>0</b>	<b>366</b>				
		Darambuno	782	755	Kerowagi HC	781	163	373	03.08.17	1	1	1	0	85	C/ Radio Sir	Road		
		Gagul	1,001	1,131	Kerowagi HC	1,312	250	627	03.08.17	1	1	1	0	43	C/ Radio Sir	Road		
		Niglapagange	948	834	Kerowagi HC	751	166	357	03.08.17	1	1	1	0	20	C/ Radio Sir	Road		
		Dine	278	719	Kerowagi HC	859	175	410	04.08.17	1	1	1	0	85	C/ Radio Sir	Road		
		Dendigle	543	821	Kerowagi HC	898	150	430	04.08.17	1	1	1	0	120	C/ Radio Sir	Road		
		Gagul Community School	61	0	Kerowagi HC	64	14	30	03.08.17	1	1	1	0	13	C/ Radio Sir	Road		
22	KEROWAGI URBAN		<b>1,800</b>	<b>2,832</b>		<b>2,634</b>	<b>400</b>	<b>1,262</b>		<b>6</b>	<b>6</b>	<b>6</b>	<b>0</b>	<b>389</b>				
		Riot Squad Res.	347	1,090	Kerowagi HC	384	53	183	05.08.17	1	1	1	0	47	C/ Radio Sir	Road		
		Town - District Office	348	415	Kerowagi HC	468	82	224	05.08.17	1	1	1	0	82	C/ Radio Sir	Road		
		Kerowagi High School	362	331	Kerowagi HC	348	47	167	06.08.17	1	1	1	0	45	C/ Radio Sir	Road		
		Coffee Factory	268	0	Kerowagi HC	281	50	134	06.08.17	1	1	1	0	49	C/ Radio Sir	Road		
		Hospital - Market	475	570	Kerowagi HC	668	100	322	05.08.17	1	1	1	0	99	C/ Radio Sir	Road		
		Police Barracks		426	Kerowagi HC	485	68	232	05.08.17	1	1	1	0	67	C/ Radio Sir	Road		
										0								
<b>KUP RURAL</b>			<b>18,914</b>	<b>19,013</b>		<b>15,552</b>	<b>2,754</b>	<b>7,435</b>		<b>26</b>	<b>25</b>	<b>0</b>	<b>0</b>	<b>162</b>	<b>25</b>			
1	KUMGA		<b>2,101</b>	<b>3,497</b>		<b>3,203</b>	<b>582</b>	<b>1,595</b>		<b>6</b>	<b>6</b>	<b>0</b>	<b>0</b>	<b>10</b>				
		Kup	402	439	Kup HC	363	55	177	03.08.17	1	1	0	0	4	NBC	Road		
		Tembuka	297	355	Kup HC	444	85	222	03.08.17	1	1	0	0	0	NBC	Road		
		Whagi Bridge	1,115	1,304	Kup HC	1,232	223	594	03.08.17	1	1	0	0	4	NBC	Road		
		Dondua	251	430	Kup HC	320	68	171	03.08.17	1	1	0	0	0	NBC	Road		
		Kup Stn.	21	135	Kup HC	314	57	166	03.08.17	1	1	0	0	0	NBC	Road		
		Kup Community School	15	834	Kup HC	530	94	265	03.08.17	1	1	0	0	2	NBC	Road		
2	KUMAI BONMEKU		<b>2,218</b>	<b>2,485</b>		<b>2,580</b>	<b>468</b>	<b>1,232</b>		<b>2</b>	<b>2</b>	<b>0</b>	<b>0</b>	<b>33</b>				
		Gamar 2	621	1,048	Kup HC	2,004	327	948	04.08.17	1	1	0	0	28	NBC	250 nets was filled in Trust From and left with the DHO Mr Stiven Gena		
		Kuzil	1,030	654	Kup HC	576	141	284	04.08.17	1	1	0	0	5	NBC	Road		
		Niglgol	567	783	Kup HC					1						Coved under Miunde Hc		
3	YURI		<b>1,419</b>	<b>1,843</b>		<b>462</b>	<b>112</b>	<b>205</b>		<b>2</b>	<b>2</b>	<b>0</b>	<b>0</b>	<b>0</b>				
		Warabegua	517	576	Kup HC	243	62	111	04.08.17	1	1	0	0	0	NBC	Road		
		Domna	266	288	Kup HC	219	50	94	04.08.17	1								

LLG	WARD	VILLAGE	Estimated 2017 Population Based On Census	Projected Population Based On 2014 Survey	Health Centre	Population Surveyed	House Holds Surveyed	Nets Issued	Date Of Distribution	Villages	Digicel	Bmobile	Citifon	Houses With Radios	Radio Networks	Comment	
		Muru 1	609	709	Kup HC	666	128	301	04.08.17	1	1	0	0	0	NBC	Road	
		Muru Community School	274	500	Kup HC	435	88	193	04.08.17	1	1	0	0	11	NBC	Road	
5	KUMA	KINDINGAPAM	1,118	1,290		1,784	299	854		3	3	0	0	19			
		Muru 2	243	360	Kup HC	555	100	260	04.08.17	1	1	0	0	13	NBC	Road	
		Gonga	359	406	Kup HC	619	100	295	04.08.17	1	1	0	0	6	NBC	Road	
		Dobil	516	525	Kup HC	610	99	299	04.08.17	1	1	0	0	0	NBC	Road	
6	ENDUGLA	NANGINKU	2,428	2,252		2,380	439	1,158		4	4	0	0	42			
		Kerenga	904	755	Kup HC	717	139	348	05.08.17	1	1	0	0	33	NBC	Road	
		Gawale	449	460	Kup HC	620	100	296	05.08.17	1	1	0	0	0	NBC	Road	
		Gurumugl	878	799	Kup HC	824	150	409	05.08.17	1	1	0	0	9	NBC	Road	
		Dimbai	198	238	Kup HC	219	50	105	05.08.17	1	1	0	0	0	NBC	Road	
7	ENDUGLA	KUNAUNAKA	2,424	2,714		3,355	512	1,581		4	4	0	0	47			
		Iuaga	590	740	Kup HC	952	146	452	06.08.17	1	1	0	0	5	NBC	Road	
		Gunbo	1,155	1,361	Kup HC	1,203	196	569	06.08.17	1	1	0	0	21	NBC	Road	
		Erimandai	263	218	Kup HC	214	50	101	06.08.17	1	1	0	0	2	NBC	Road	
		Konmil Community School	415	395	Kup HC	986	120	459	06.08.17	1	1	0	0	19	NBC	Road	
8	ENDUGLA	KUNAUNAKU 2	1,248	1,035		687	126	316		2	2	0	0	0			
		Bi	788	745	Kup HC	519	94	237	06.08.17	1	1	0	0	0	NBC	Road	
		Tambunoyaundo	459	289	Kup HC	168	32	79	06.08.17	1	1	0	0	0	NBC	Road	
9	BANDI	2	2,652	1,477													
		Guruwal	525	218	Neregaima M	NOT DONE DUE TO NO ACCESS THROUGH GUMINE										Road / 2 Hr Trek	
		Yopa	583	399	Neregaima M												Road / 2 Hr Trek
		Kui	554	171	Neregaima M												Road / 2 Hr Trek
		Urugai/kuglame Community S	619	534	Neregaima M												Road / 2 Hr Trek
		Duamelma	371	154	Neregaima M												Road / 2 Hr Trek
10	BANDI	No 1	2,424	1,210		NOT DONE DUE TO NO ACCESS THROUGH GUMINE											
		Moromambuno	1,140	263	Neregaima M												Road / 2 Hr Trek
		Neregaima	630	315	Neregaima M												Road / 2 Hr Trek
		Kamtai	438	473	Neregaima M												Road / 2 Hr Trek
		Neregaima Cath Mission	216	160	Neregaima M												Road / 2 Hr Trek